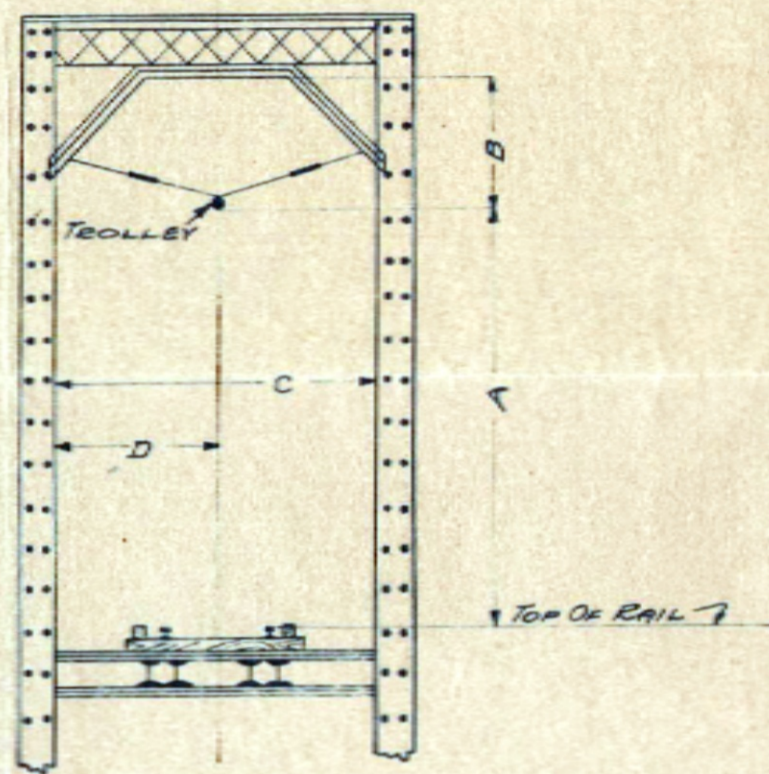
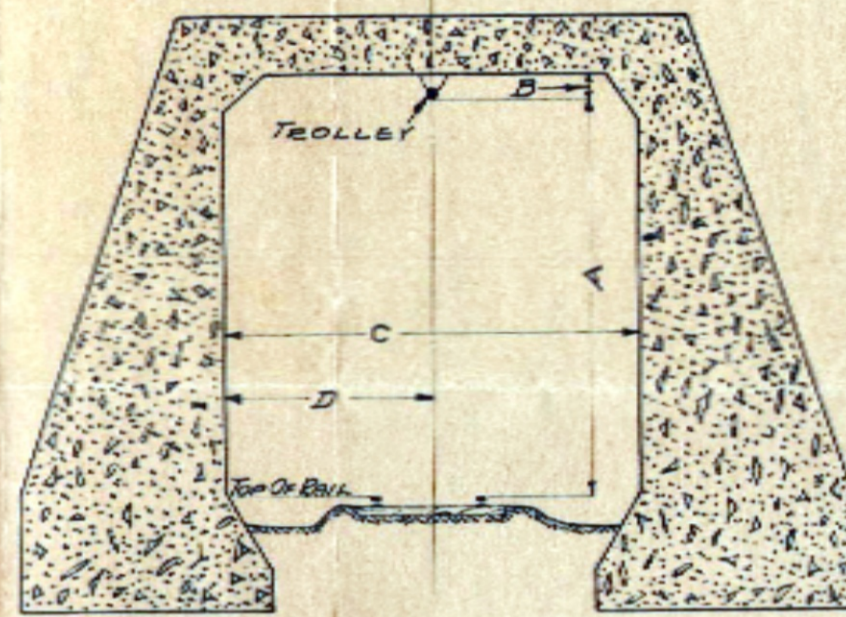


TABLE OF CONTENTS
Bridge Department Drawings

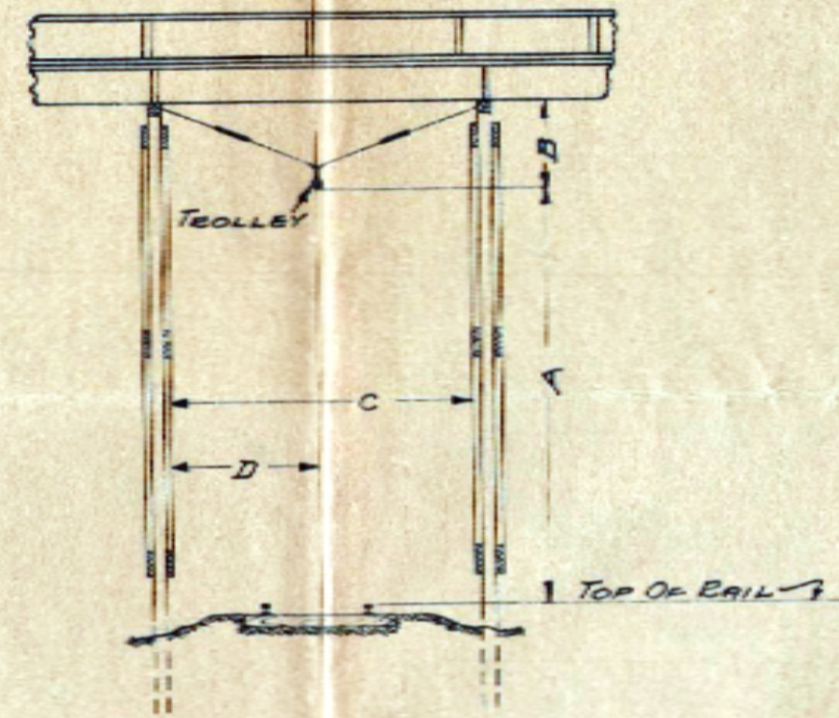
<u>Page</u>	<u>Bridge Type</u>
2	Table of Bridge Clearances 1928
3	Girder Bridge
4	Standard Five-Foot Barrel Culvert
5	Standard Eight-Foot Box Culvert
6	Trestle Front Profile
7	Trestle Side Profile



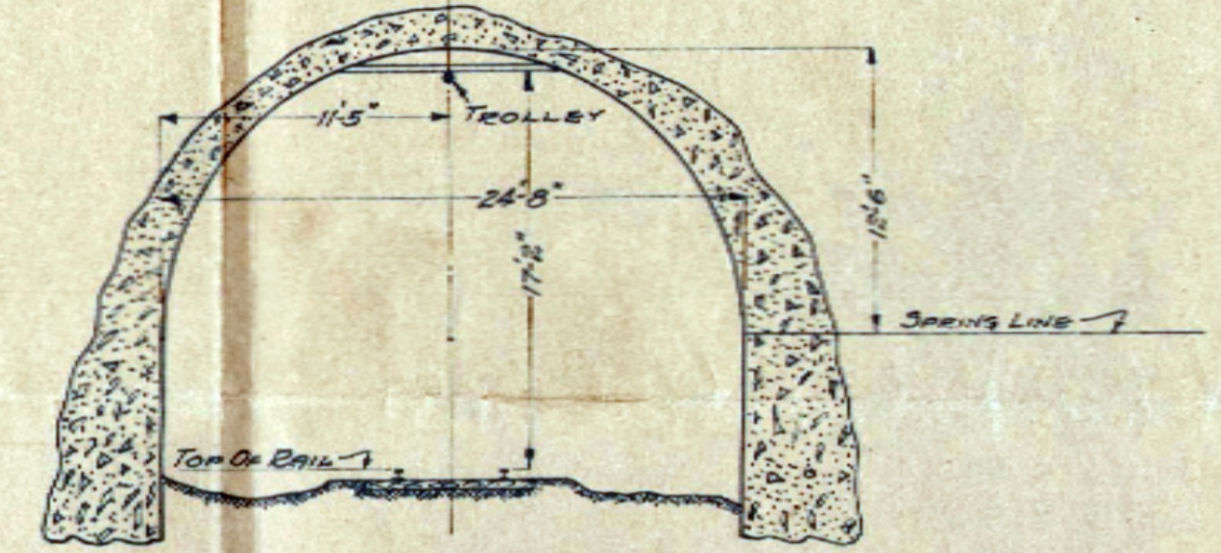
STEEL THROUGH BRIDGE



SUBWAY



OVERHEAD FOOT & WAGON BRIDGE



C.C.C. & ST. L. SUBWAY
SOUTH OF WORDEN

TABLES OF CLEARANCES

NAME OF BRIDGE	LOCATION		DISTANCES			
	DIVISION	VICINITY	A	B	C	D
CAHOKIA CREEK	ST. LOUIS-SPRINGFIELD	EDWARDSVILLE	16-2 1/2	15-9 1/2	16-2 1/2	
BLACK BRIDGE (L.R.R.)	"	EDWARDSVILLE	16-6 1/2	12-8	6-3 1/2	
CAHOKIA CREEK	"	STAUNTON	16-1 1/2	12-8	6-2	
MACOUPIN CREEK	"	CARLINVILLE	17-0	12-8	6-3	
SUGAR CREEK	"	THAYER	18-3 1/2	16-1 1/2	5-0 1/2	
PANTHER CREEK	"	IRWINS PARK	18-10	14-5	7-2 1/2	
LICK CREEK	"	WOODSIDE	17-9	14-0 1/2	7-0 1/2	
C. & A. R. OVERPASS	"	SPRINGFIELD	18-1	12-10	6-5	
SANGAMON RIVER	SPRINGFIELD-MACON	SHERMAN	17-0 1/2	14-0 1/2	7-0	
KICKAPOO CREEK	"	LINCOLN	14-8 1/2	14-0	6-0	
SUGAR CREEK	"	LINCOLN	13-10	14-1	7-0	
POVERHOUSE BRIDGE	PEORIA-DECATUR	PEORIA	18-5	14-4	6-10	
ILLINOIS RIVER	"	PEORIA	18-7 1/2	14-6	7-2 1/2	
ILL. RIVER DRAM BR.	"	PEORIA	17-4 1/2	12-1	5-1 1/2	
MACKINAW RIVER	"	MACKINAW	18-6 1/2	14-0	6-3 1/2	
SALT CREEK	"	CLINTON	16-9	14-3	7-2	
SANGAMON RIVER	SPRINGFIELD-DANVILLE	EVERTON	17-4 1/2	16-0	6-0	
STONE CREEK	"	MUNCIE	18-1 1/2	14-3	7-1 1/2	

STEEL THROUGH BRIDGE

NAME OF BRIDGE	LOCATION		DISTANCES			
	DIVISION	VICINITY	A	B	C	D
CLOVERLEAF RY.	ST. LOUIS-SPRINGFIELD	EDWARDSVILLE	18-1	18-0	8-0 1/2	
C.C.C. & ST. L. R.R.	"	WORDEN		SEE	SKETCH	
WABASH RY.	"	WORDEN	16-7	27-4	10-2 1/2	
C. & A. R. R.	"	CARLINVILLE	16-1	12-10	6-2	
C. & A. R. R.	"	SPRINGFIELD	15-9 1/2	10-2	24-3 1/2	11-5 1/2
I.C.R.R.	"	SPRINGFIELD	16-5	0-3 1/2	18-1 1/2	8-10
C.C.C. & ST. L. R.R.	SPRINGFIELD-MACON	MACKINAW	15-3 1/2	18-0	8-3 1/2	
VANDALIA R.R.	"	MACKINAW	15-1 1/2	17-8	8-3	
L.E. & W. RY.	PEORIA-DECATUR	BLOOMINGTON	15-3 1/2	14-3	8-10	
C. & A. R. R.	"	BLOOMINGTON	14-3 1/2	33-7	13-7	
I.C.R.R.	"	CLINTON	15-1 1/2	10-5	14-7 1/2	7-10
VANDALIA R.R.	"	MARION	15-10	14-6	6-3	
WAB. RY. (VANDYKE ST.)	SPRINGFIELD-DANVILLE	DECATUR	16-0	33-5	6-7 1/2	
P.O. & E. R.R. (I.C.R.R.)	"	DECATUR	14-1 1/2	17-0	8-3 1/2	
I.C.R.R. & VAN. R.R.	"	DECATUR	16-5	18-0	8-10	
I.C.R.R.	"	CHAMPAIGN	14-8 1/2	22-4	6-9	
HIGHWAY ROUTE #4	ST. LOUIS-SPRINGFIELD	N. GOWAN	19-7	1-3	31-1	8-5
HIGHWAY ROUTE #14	SPRINGFIELD-MACON	SOUTH MACON	16-5	1-7	16-1	8-5

SUBWAY

NAME OF BRIDGE	LOCATION		DISTANCES			
	DIVISION	VICINITY	A	B	C	D
PRICKET AVENUE	ST. LOUIS-SPRINGFIELD	EDWARDSVILLE	16-2 1/2	28-10	14-2 1/2	
GRUBBS WAGON BR.	"	HILLSBORO	14-4 1/2	1-1	14-9 1/2	7-2 1/2
FOX ROAD	"	SPRINGFIELD	8-7	1-8	58-1	23-5
NESBIT ED. WAGON BR.	PEORIA-DECATUR	HEYWORTH	15-1 1/2	16-6	9-0	

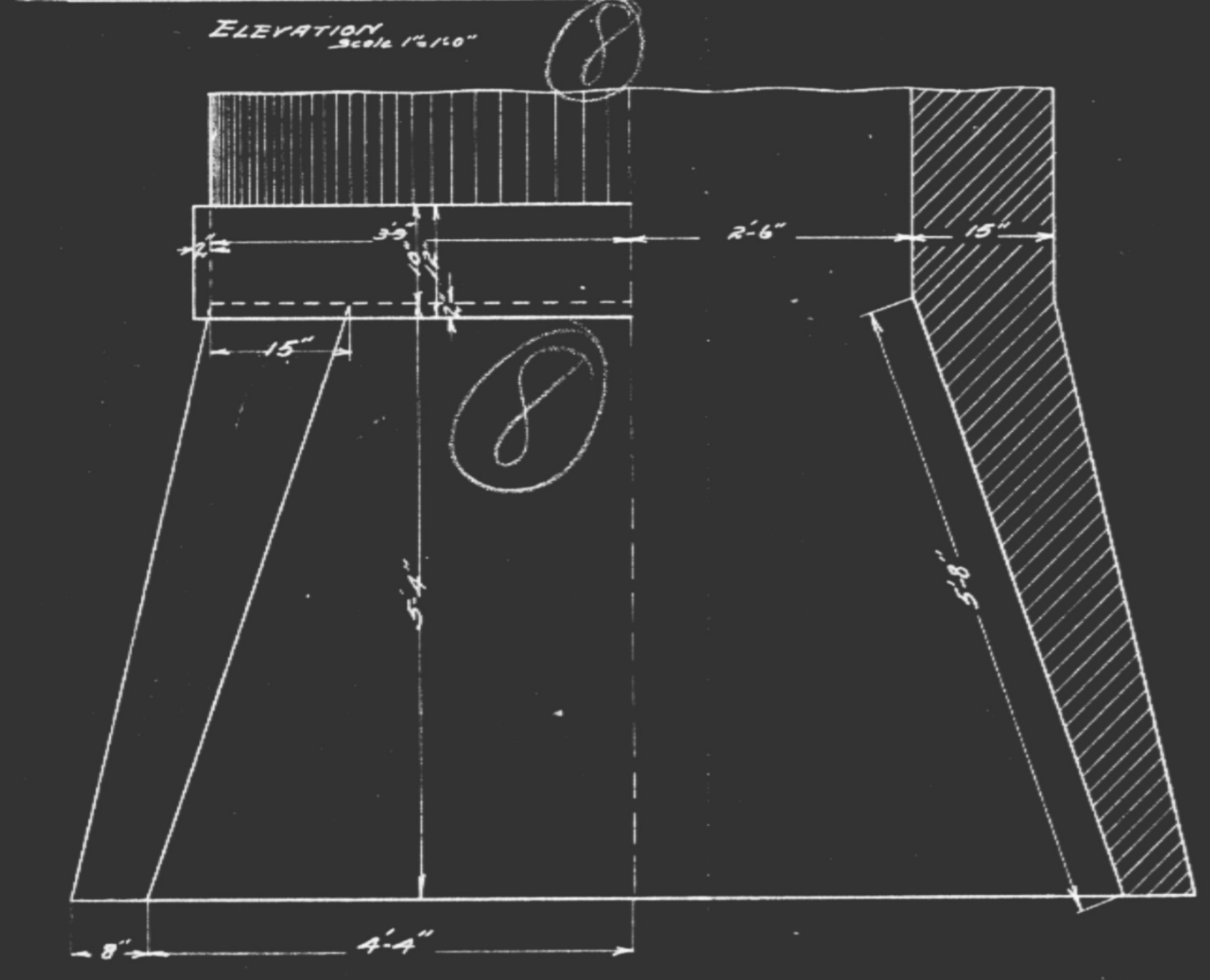
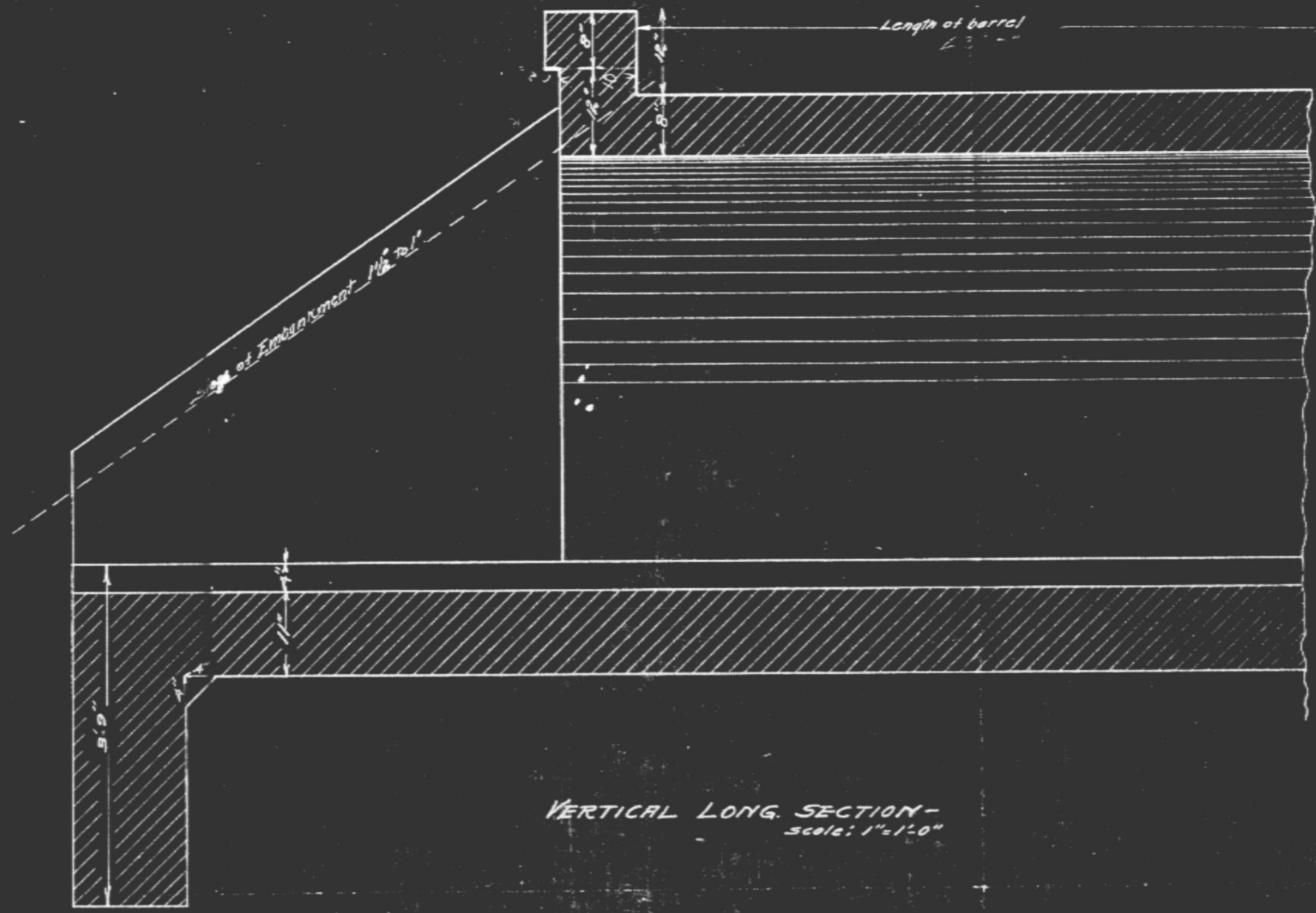
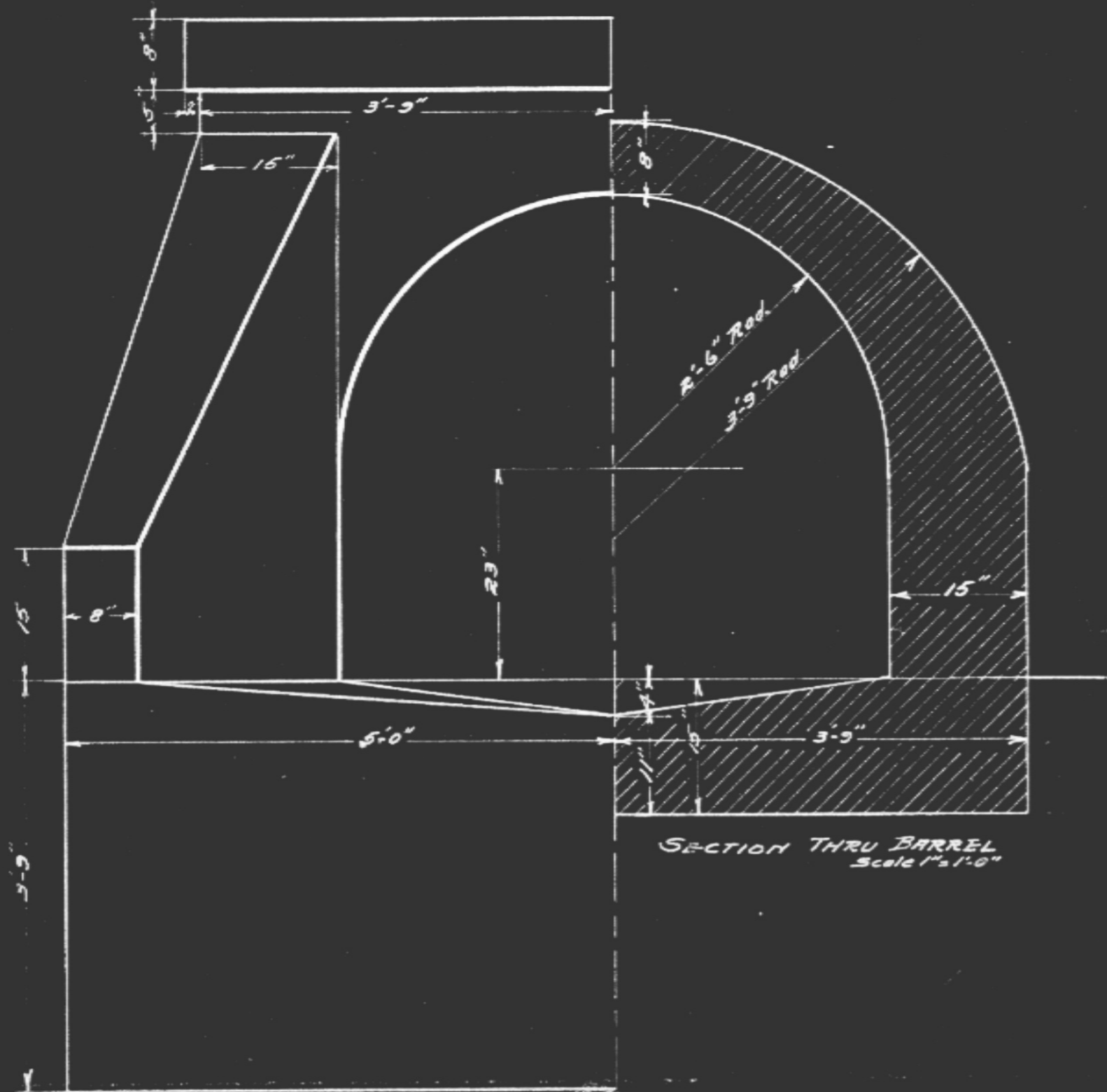
OVERHEAD FOOT & WAGON BRIDGE

REVISED

MONTH	DAY	YEAR
AUGUST	20	1928 _{pm}
NOVEMBER	21	1929 _{pm}

ILLINOIS TRACTION INC. CLEARANCES OF OVERHEAD STRUCTURES

OFFICE ENG. M. OF W., SPRINGFIELD, ILL.
SCALE: NONE MAY 1, 1928. -D.M. STONEBEE-



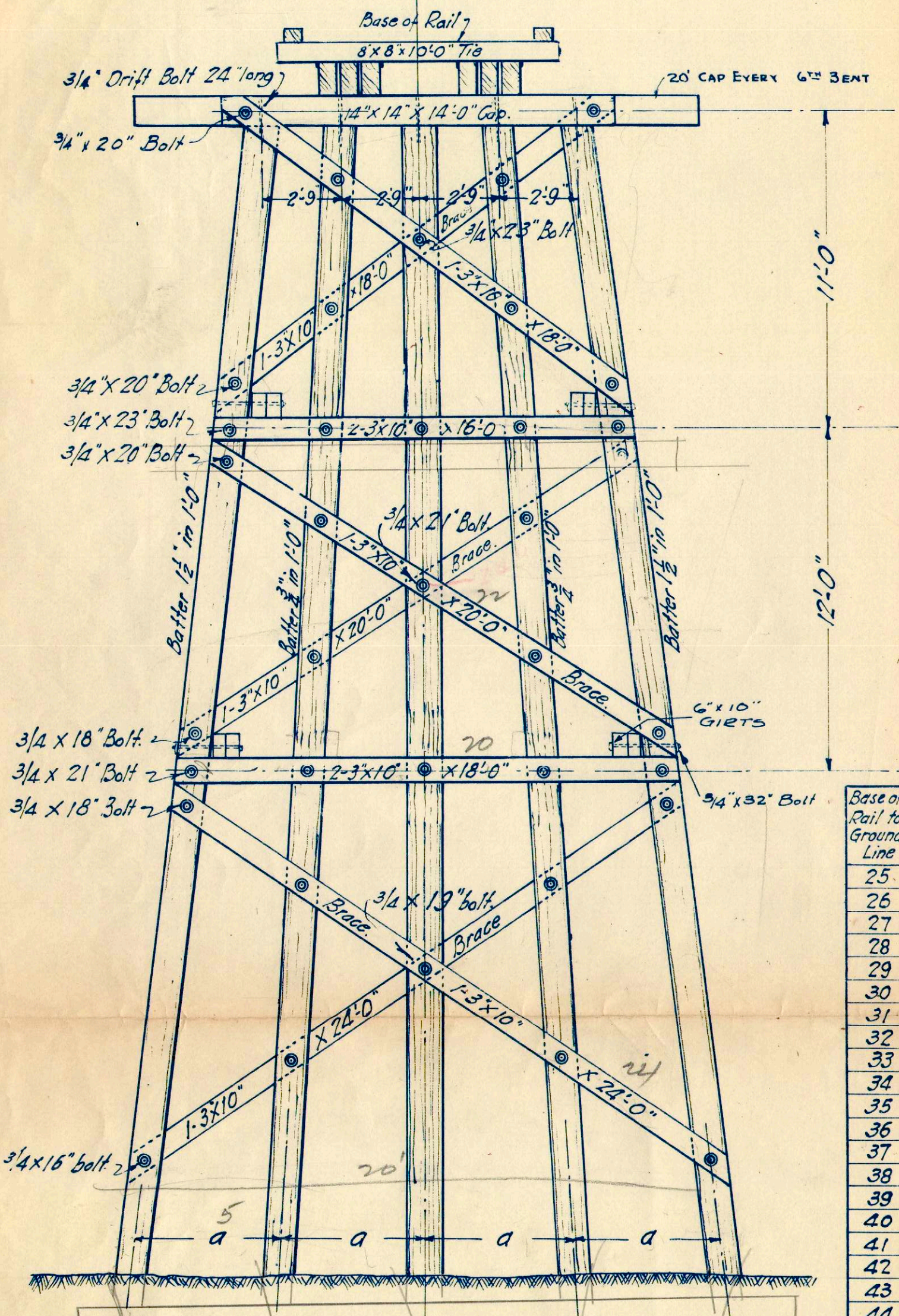
CONTENTS - 1 Cu. Yd. per lin. ft. of barrel.
13 " in Wings, Parapets, Floor of Apron
including barrel in parapet wall.
DRAINAGE - MAXIMUM - 300 ACRES.

Approved: _____
General Superintendent

Approved: *[Signature]*
Supt. Bridges & Structures

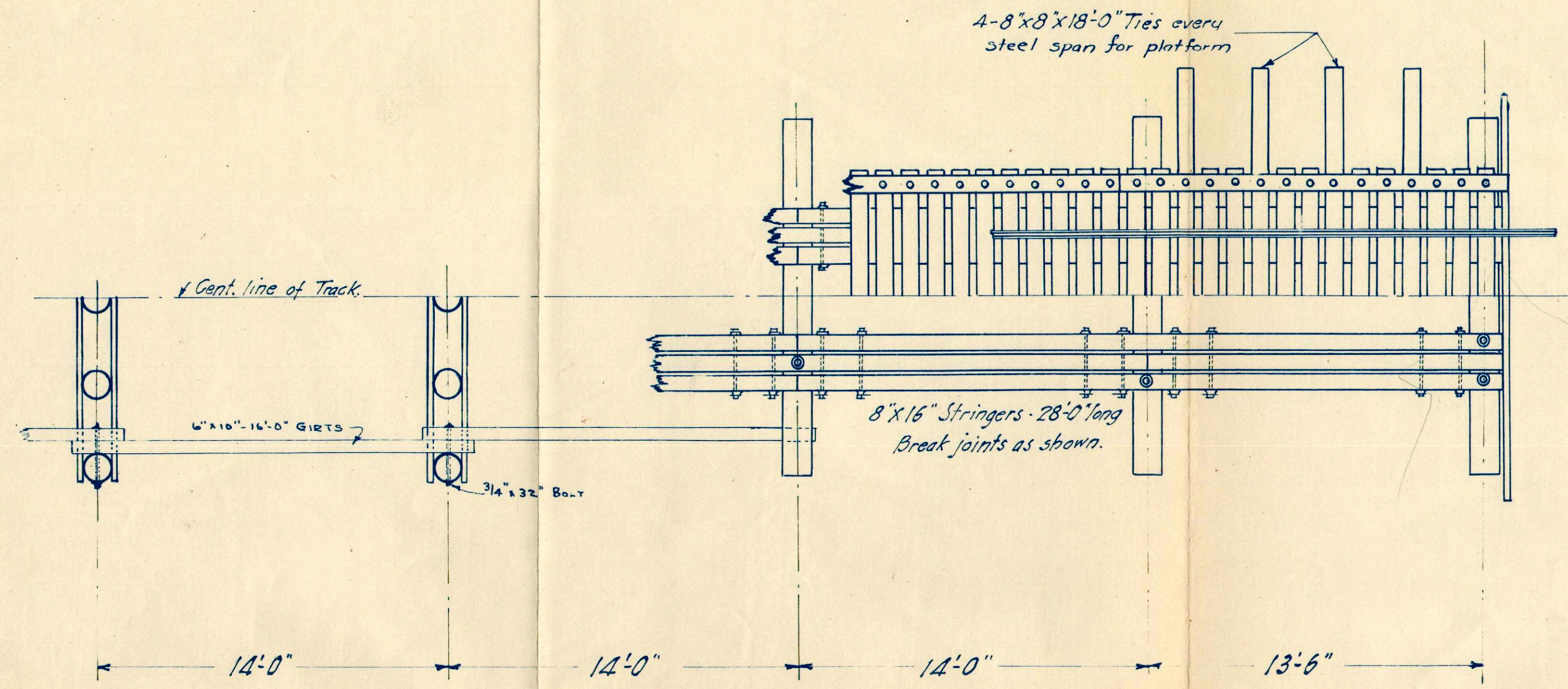
ILLINOIS TRACTION SYSTEM
STANDARD SFT. BARREL CULVERT

Approved: _____
DEC 15 1918
J. B. B. B. B.

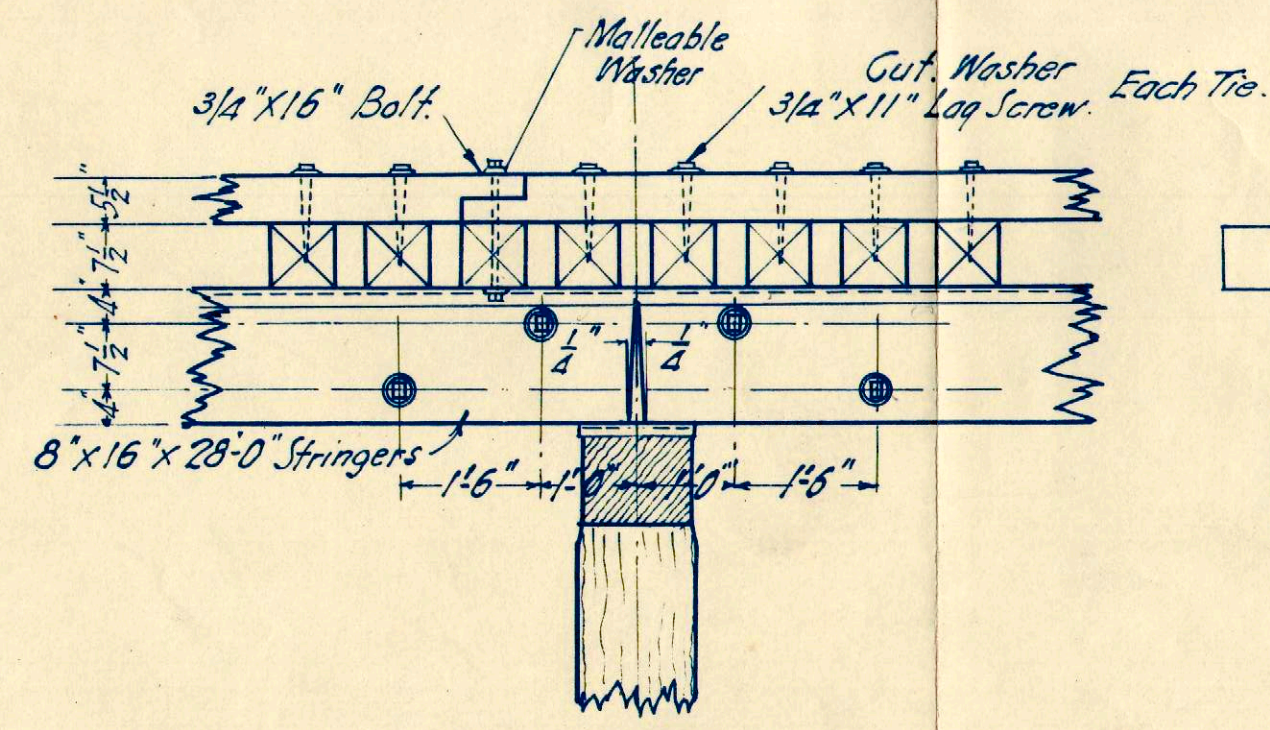


Base of Rail to Ground Line	a
25	4'-1 1/2"
26	4'-2 1/4"
27	4'-3"
28	4'-3 3/4"
29	4'-4 1/2"
30	4'-5 1/4"
31	4'-6"
32	4'-6 3/4"
33	4'-7 1/2"
34	4'-8 1/4"
35	4'-9"
36	4'-9 3/4"
37	4'-10 1/2"
38	4'-11 1/4"
39	5'-0"
40	5'-0 3/4"
41	5'-1 1/2"
42	5'-2 1/4"
43	5'-3"
44	5'-3 3/4"
45	5'-4 1/2"
46	5'-5 1/4"
47	5'-6"
48	5'-6 3/4"
49	5'-7 1/2"
50	5'-8 1/4"
51	5'-9"
52	5'-9 3/4"
53	5'-10 1/2"
54	5'-11 1/4"

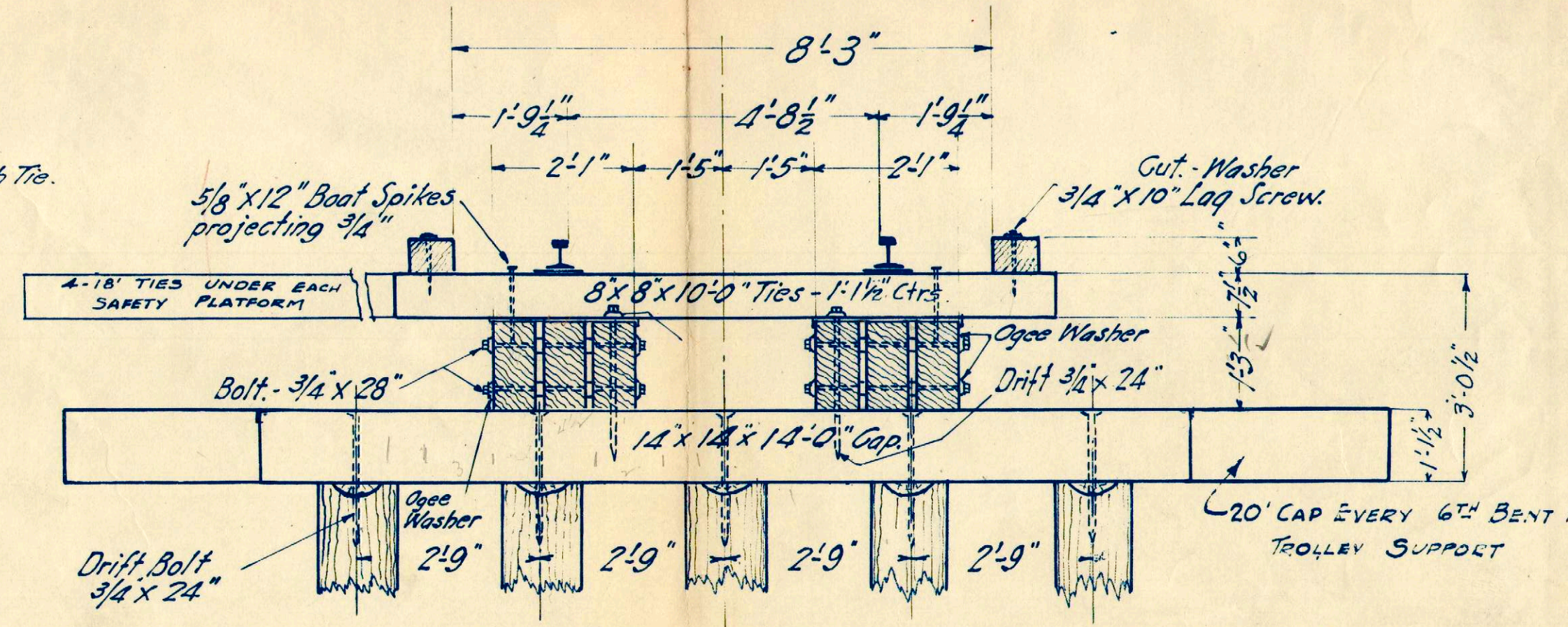
TYPE OF PILE BENT
Scale: 1/4" = 1 ft.



PLAN OF TRESTLE
Scale: 1/4" = 1 ft.

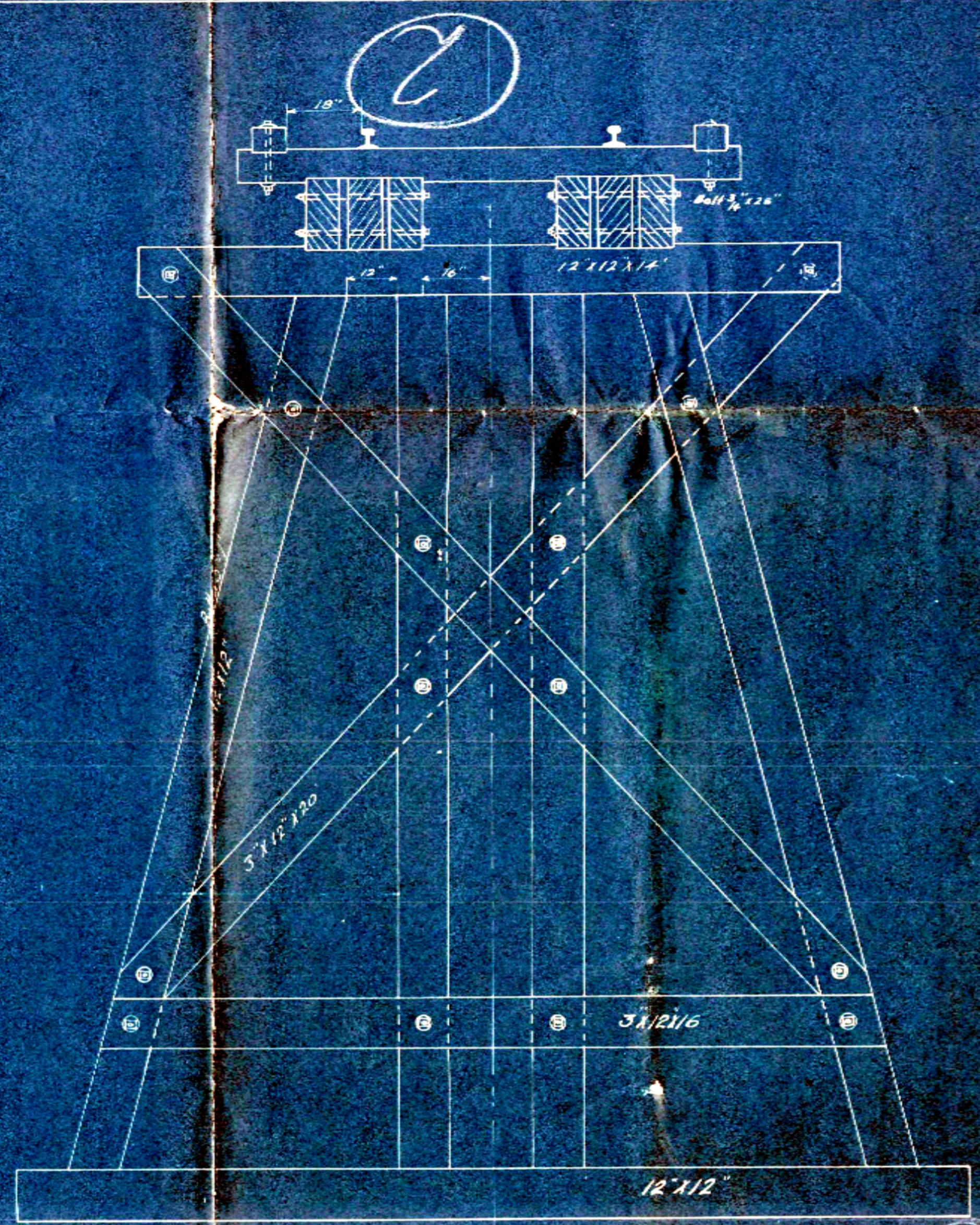
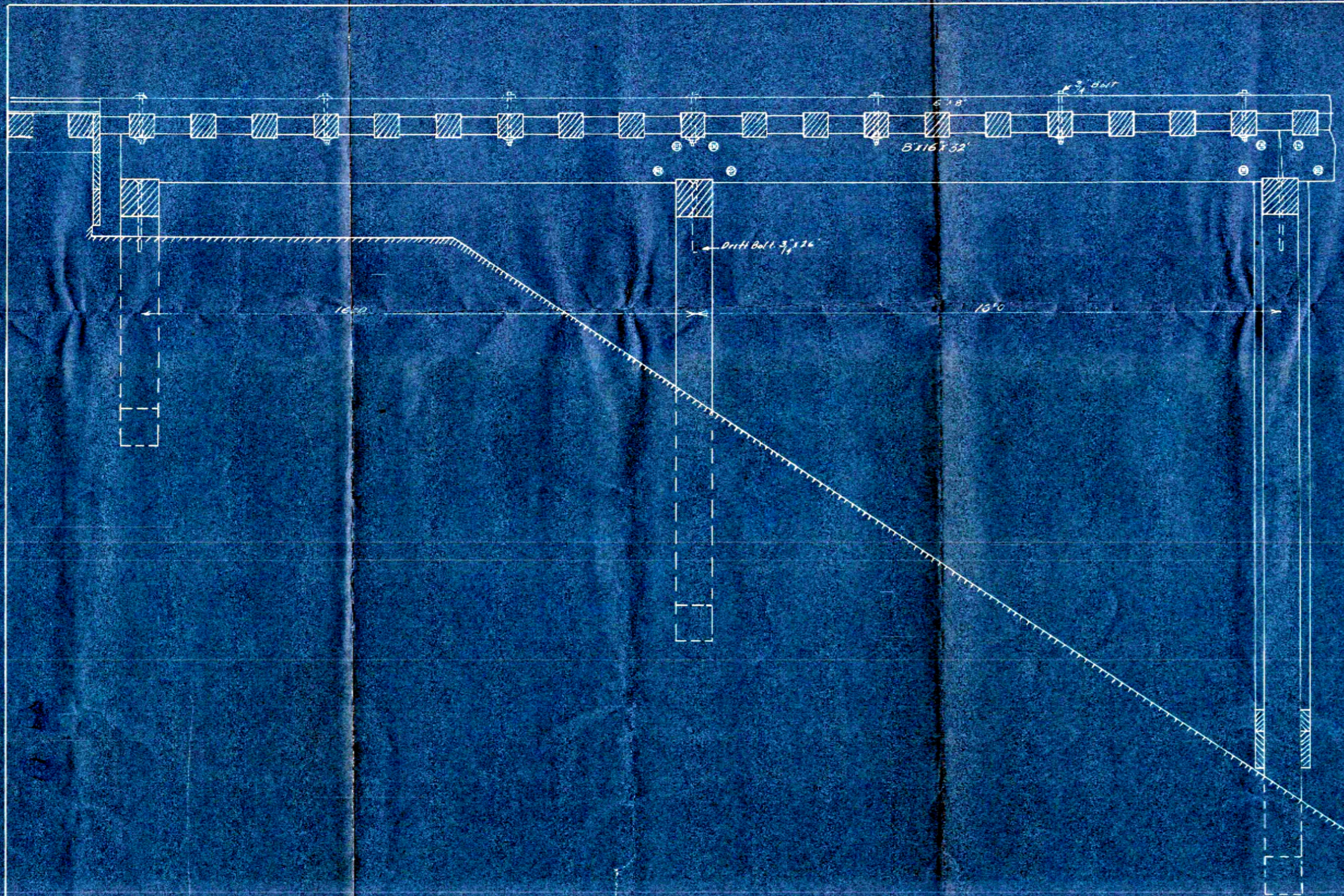


STRINGER AND GUARD RAIL FRAMING
Scale: 1/2" = 1'-0"



TRANSVERSE SECTION OF FLOOR
Scale: 1/2" = 1'-0"

TYPICAL CONSTRUCTION
AFE T+E 147



ILLINOIS TRACTION SYSTEM
 STANDARD FRAME TRESTLE
 Office Engineer M. of W. Springfield
 Scale $\frac{1}{2}'' = 1'$ Feb. 5, 1918.

2

N