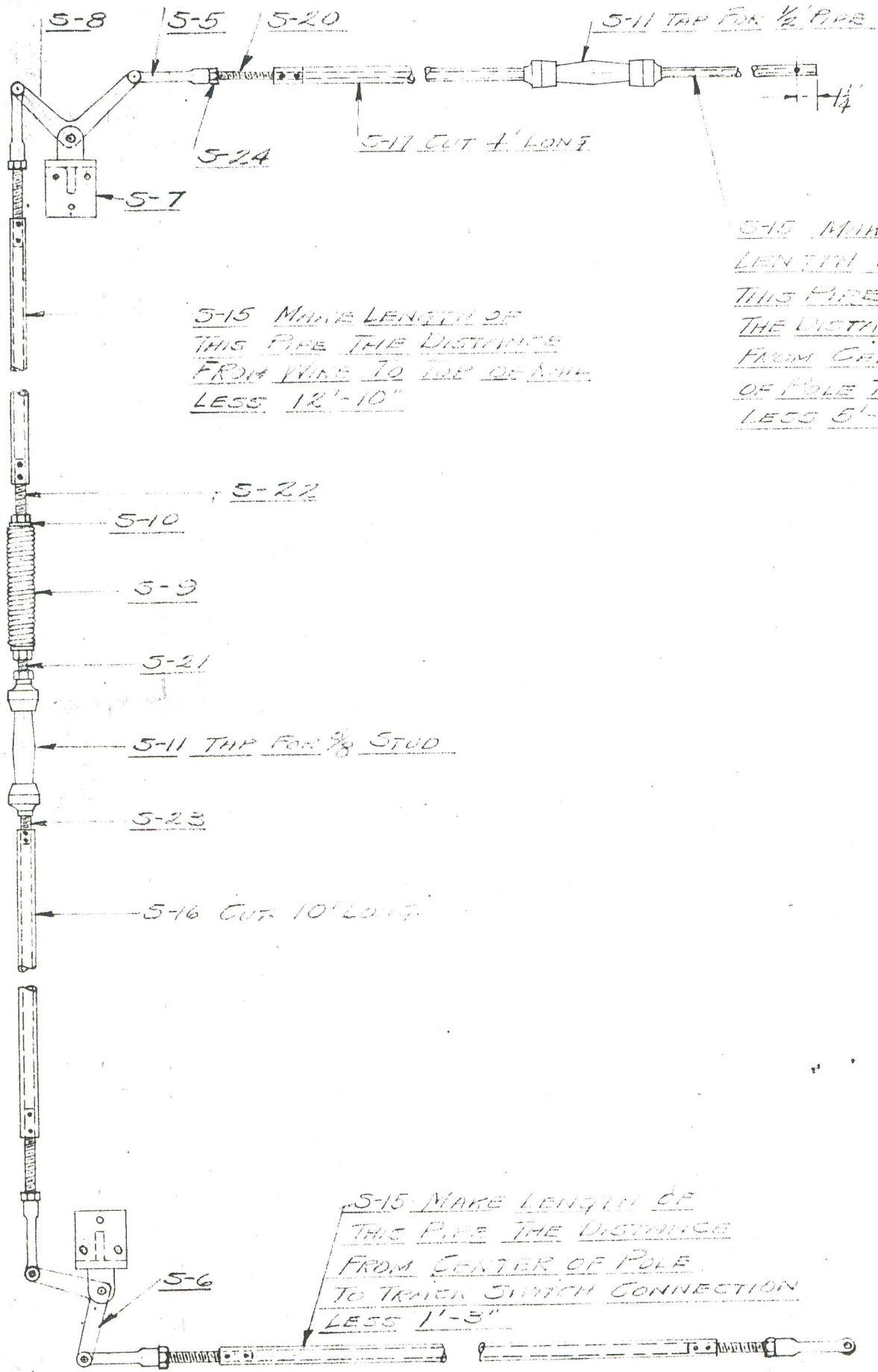


Table Of Contents

Overhead Dept Drawings

<u>Page</u>	<u>Details</u>
2	Mechanical Trolley Frog Switch Throw
3	Mechanical Trolley Frog Switch Throw -Trolley Wire Clamp
5	Stinger Pole Plug
6	Stinger Pole Trolley Wire Hook
7	Tower Car

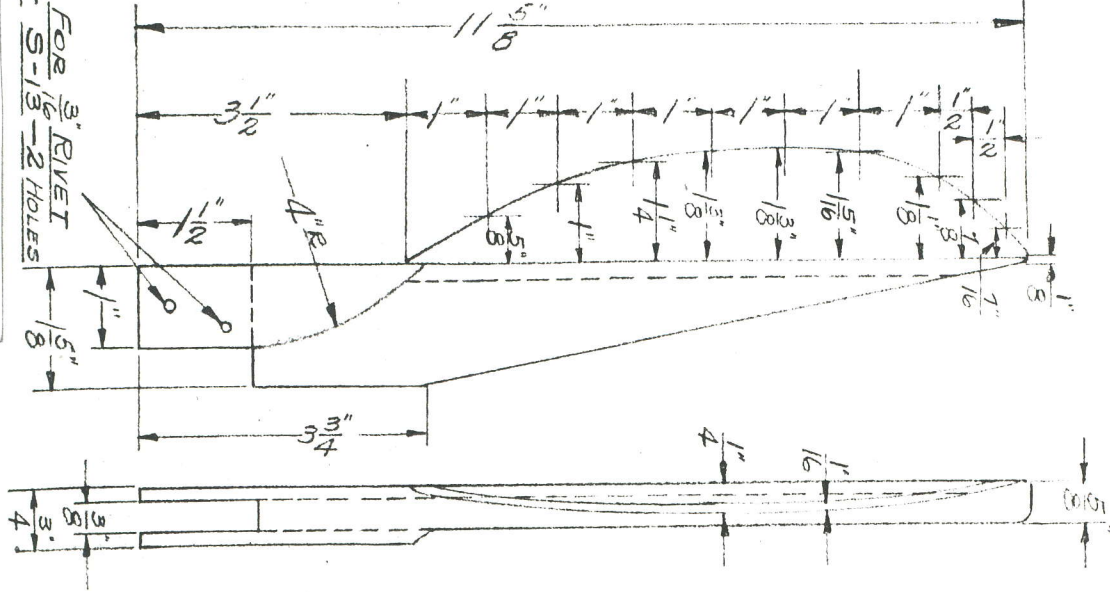


5-15 MAKE LENGTH OF THIS PIPE THE DISTANCE FROM WIRE TO TOP OF RAIL LESS 12'-10"

5-15 MAKE LENGTH OF THIS PIPE THE DISTANCE FROM CENTER OF POLE TO WIRE LESS 5'-3"

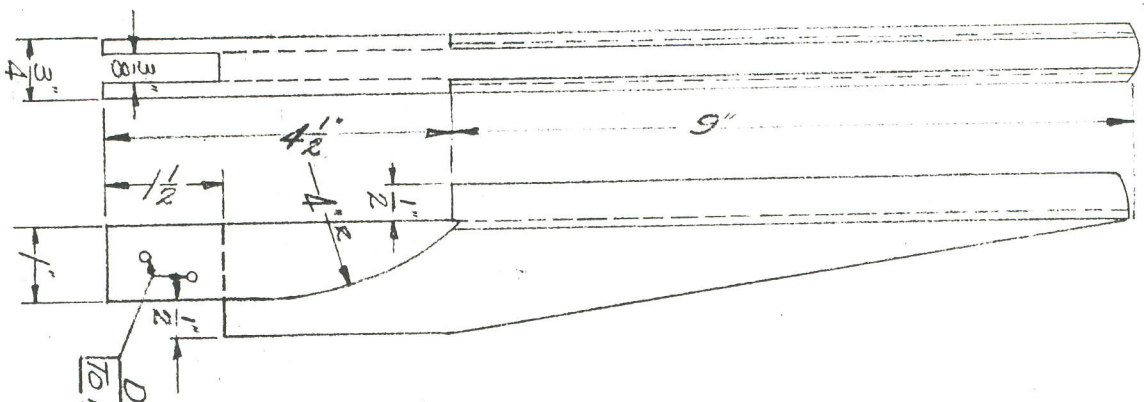
5-15 MAKE LENGTH OF THIS PIPE THE DISTANCE FROM CENTER OF POLE TO TRACK SWITCH CONNECTION LESS 1'-3"

RYMCO SWITCH. RAILWAY MATERIALS CO



S-1-R BRASS RIGHT HAND SHOWN
 S-2-L BRASS LEFT HAND

WEIGHT 1 3/4 POUNDS.



S-3 BRASS CASTING

WEIGHT - 2 1/2 #

DRILL FOR 3/16 RIVET
 TO FIT S-13-2-HOLES

THE RAILWAY MATERIALS CO.
 TOLEDO PLANT.

PARTS

NO REQ'D	PART NO	
1	5-1R	BRASS CASTING.
1	5-2L	BRASS CASTING.
1	5-3	BRASS TONGUE CASTING
5	5-5	CLEVIS CASTINGS, MALLEABLE IRON
1	5-6	BELL CRANK CASTING, MALLEABLE IRON
2	5-7	BELL CRANK BRACKET, MALLEABLE IRON.
1	5-8	BELL CRANK CASTING, MALLEABLE IRON
1	5-9	9/32 CLOSED SPRING.
2	5-10	SPRING PLUGS, MALLEABLE IRON.
1	5-11	WOOD STRAIN INSULATOR FOR 5/8" STUD
1	5-11	WOOD STRAIN INSULATOR FOR 1/2" PIPE.
1	5-12	GALVANIZED HOOD AND COVER.
1	5-13	TIRE STEEL 6' LONG.
1	5-14	SPECIAL BOLT 1/2" x 4 1/2" 2-STD. NUTS 2-WASHERS 1-LOCK NUT
3	5-15	1/2" BLACK IRON PIPE. CUT LENGTH AS ORDERED
1	5-16	1/2" BLACK IRON PIPE CUT 10 FEET LONG.
1	5-17	1/2" BLACK IRON PIPE CUT 4 FEET LONG.
2	5-18	5/8" LOCK WASHERS
1	5-19	1/4 x 1/8 OVAL HEAD RIBBT
5	5-20	5/8 x 1 1/2 STUDS WITH 5 1/2" THREAD.
1	5-21	5/8 x 4 STUD WITH 4" THREAD
1	5-22	5/8 x 4 3/4 STUD WITH 3" THREAD
1	5-23	5/8 x 2 3/4 STUD WITH 1 1/4" THREAD.
8	5-24	5/8 HEX. NUTS
14	5-25	3/16 x 1" OVAL HEAD RIVETS.
2	5-26	5/8 x 2 1/4" MACHINE BOLTS WITH LOCK NUTS.
5	5-27	1/2" x 2 1/4" MACHINE BOLTS WITH LOCK NUTS.
6	5-28	1/2" LOCK NUTS.

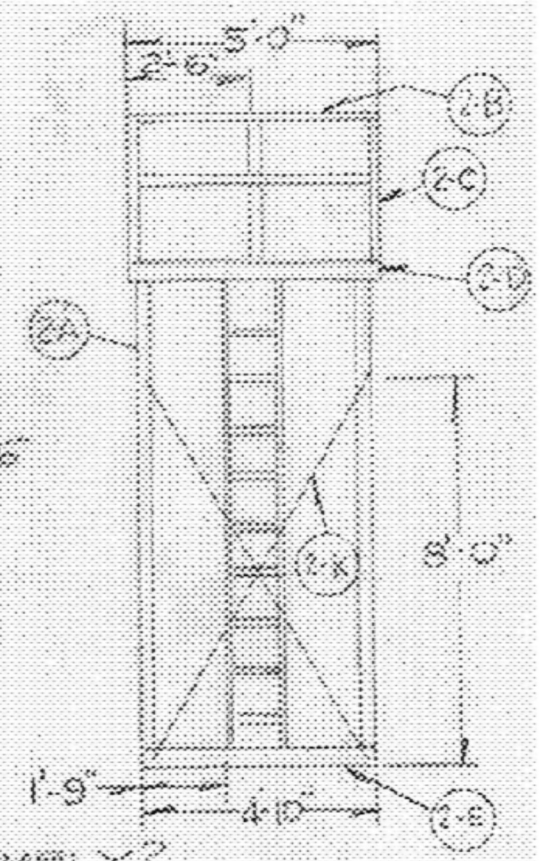
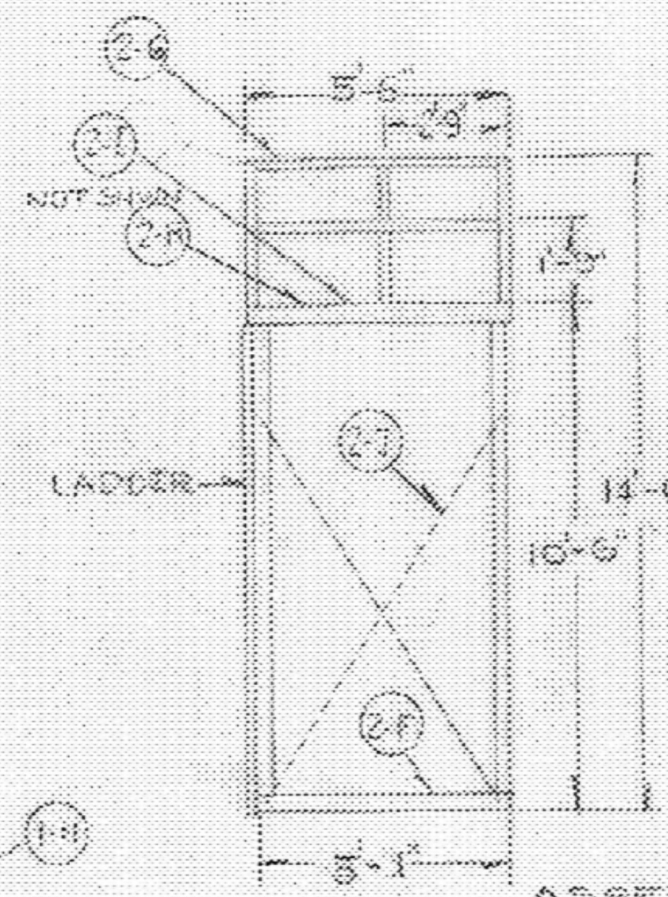
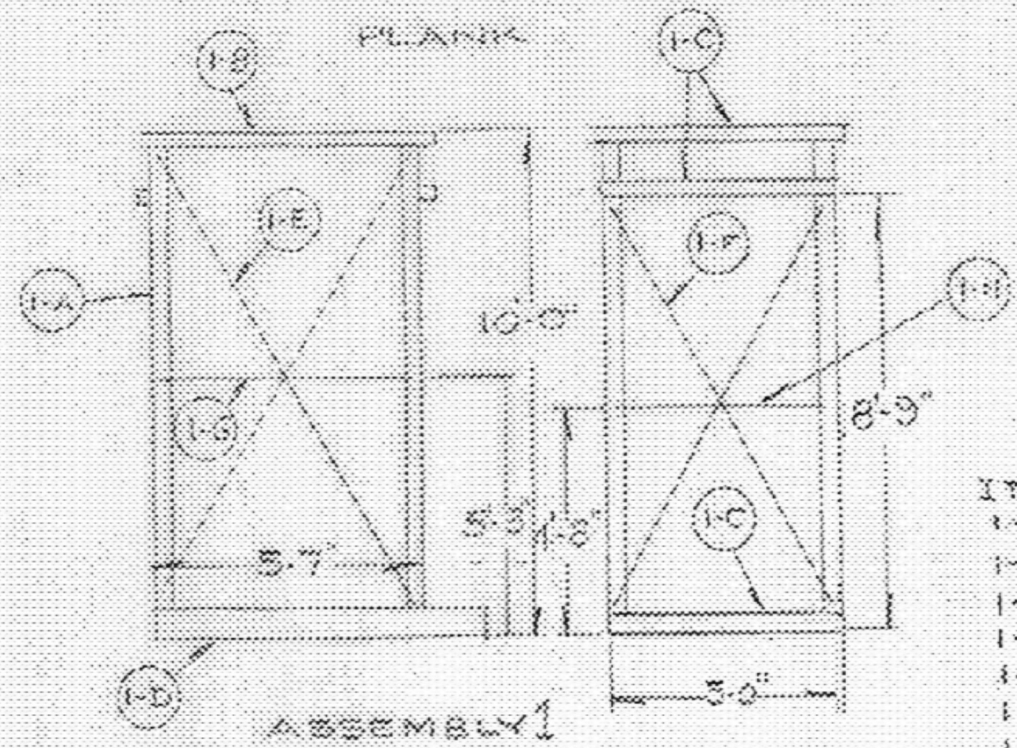
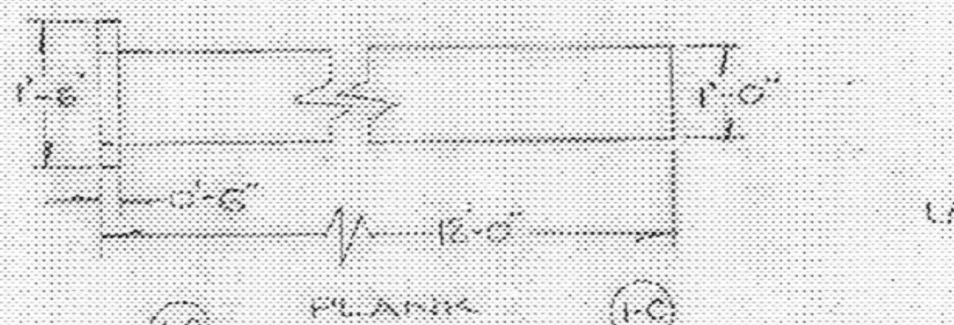
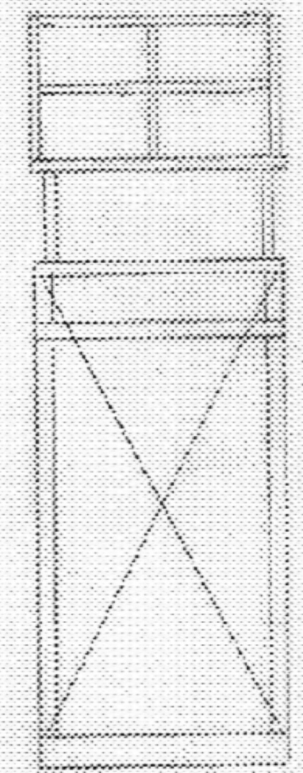
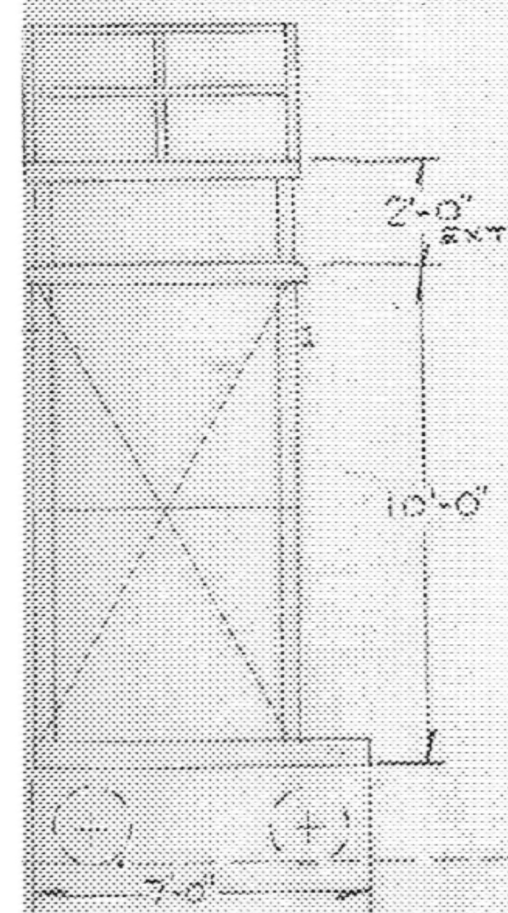
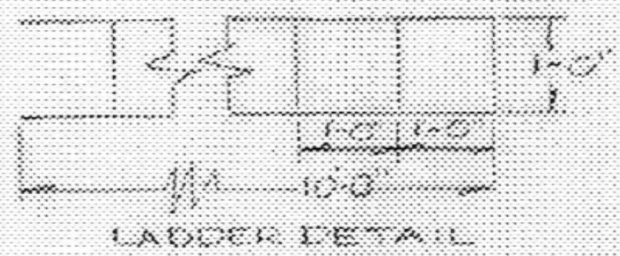
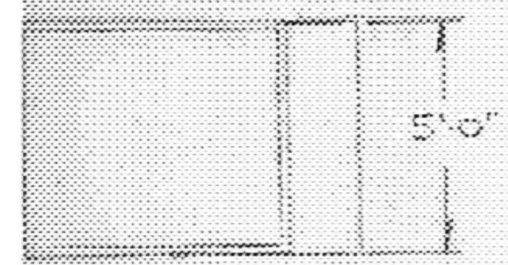
RAILWAY MATERIALS CO.

TOLEDO PLANT





CONSTRUCTION NOTES ARE CONTAINED IN ACCOMPANYING ARTICLE



PARTS LIST

ASSEMBLY 1				ASSEMBLY 2				
ITEM	REQ	DESCRIPTION	ITEM	REQ	DESCRIPTION	ITEM	REQ	DESCRIPTION
1-A	4	6" X 2" X 10'-0" LG	2-A	4	4" X 4" X 10'-0"	2-A	4	4" X 4" X 10'-0"
1-B	2	2" X 4" X 5'-7" LG	2-B	4	2" X 4" X 5'-0"	2-B	4	2" X 4" X 5'-0"
1-C	8	2" X 4" X 5'-0" LG	2-C	8	2" X 4" X 4'-0"	2-C	8	2" X 4" X 4'-0"
1-D	2	4" X 8" X 5'-7" LG	2-D	2	2" X 8" X 9'-0"	2-D	2	2" X 8" X 9'-0"
1-E	2	CABLE 10'-6" LG	2-E	2	4" X 8" X 5'-0"	2-E	2	4" X 8" X 5'-0"
1-F	2	CABLE 9'-2" LG	2-F	2	4" X 8" X 5'-0"	2-F	2	4" X 8" X 5'-0"
1-G	2	TIE ROD 3'-3" LG	2-G	2	2" X 4" X 5'-0"	2-G	2	2" X 4" X 5'-0"
1-H	2	TIE ROD 4'-8" LG	2-H	2	2" X 6" X 5'-0"	2-H	2	2" X 6" X 5'-0"
			2-I	1	3/4" TIE ROD	2-I	1	3/4" TIE ROD
			2-J	2	CABLE 9'-0"	2-J	2	CABLE 9'-0"
			2-K	2	CABLE 8'-0"	2-K	2	CABLE 8'-0"

LADDER & PLANK PARTS SEE DETAILS