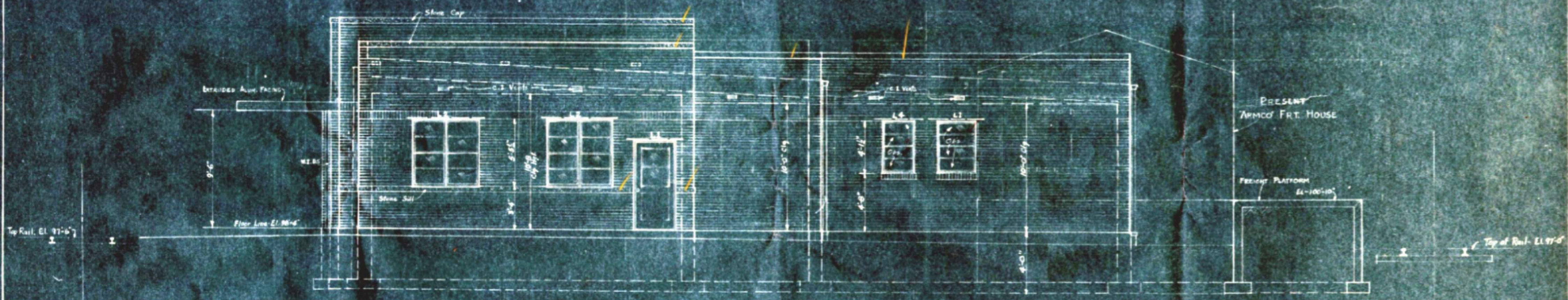
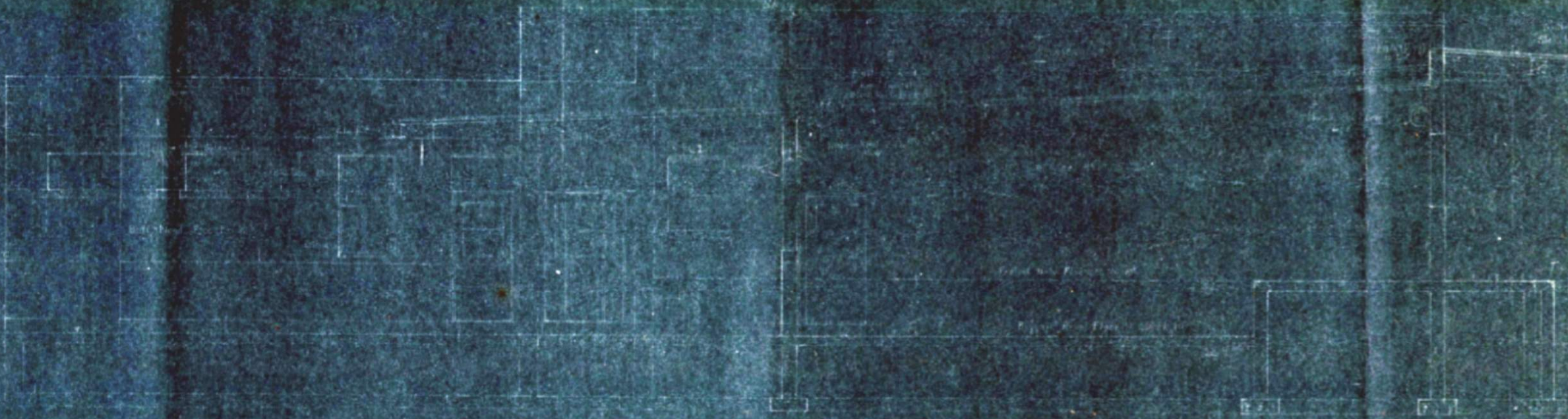


SOUTH ELEVATION

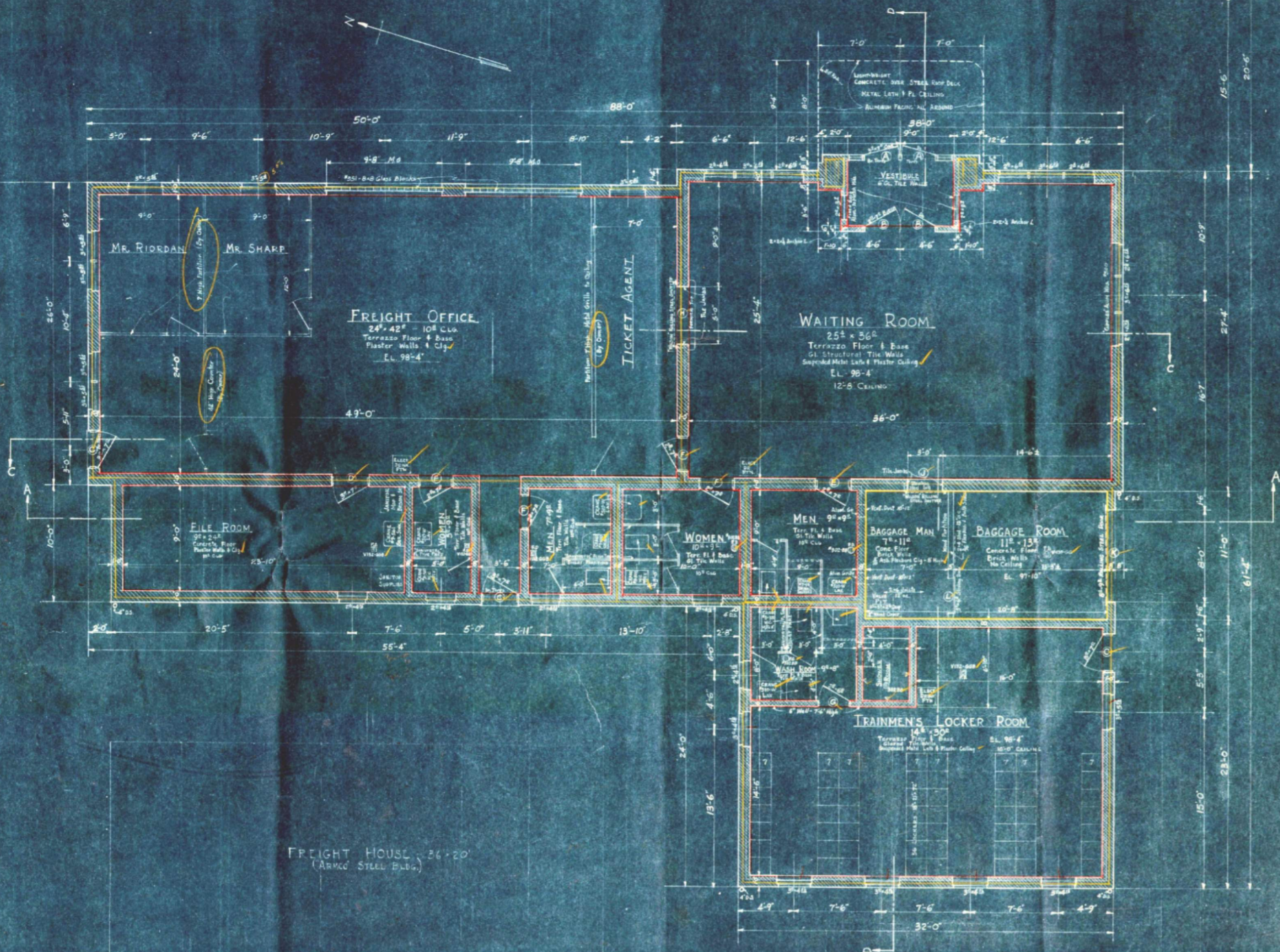


NORTH ELEVATION



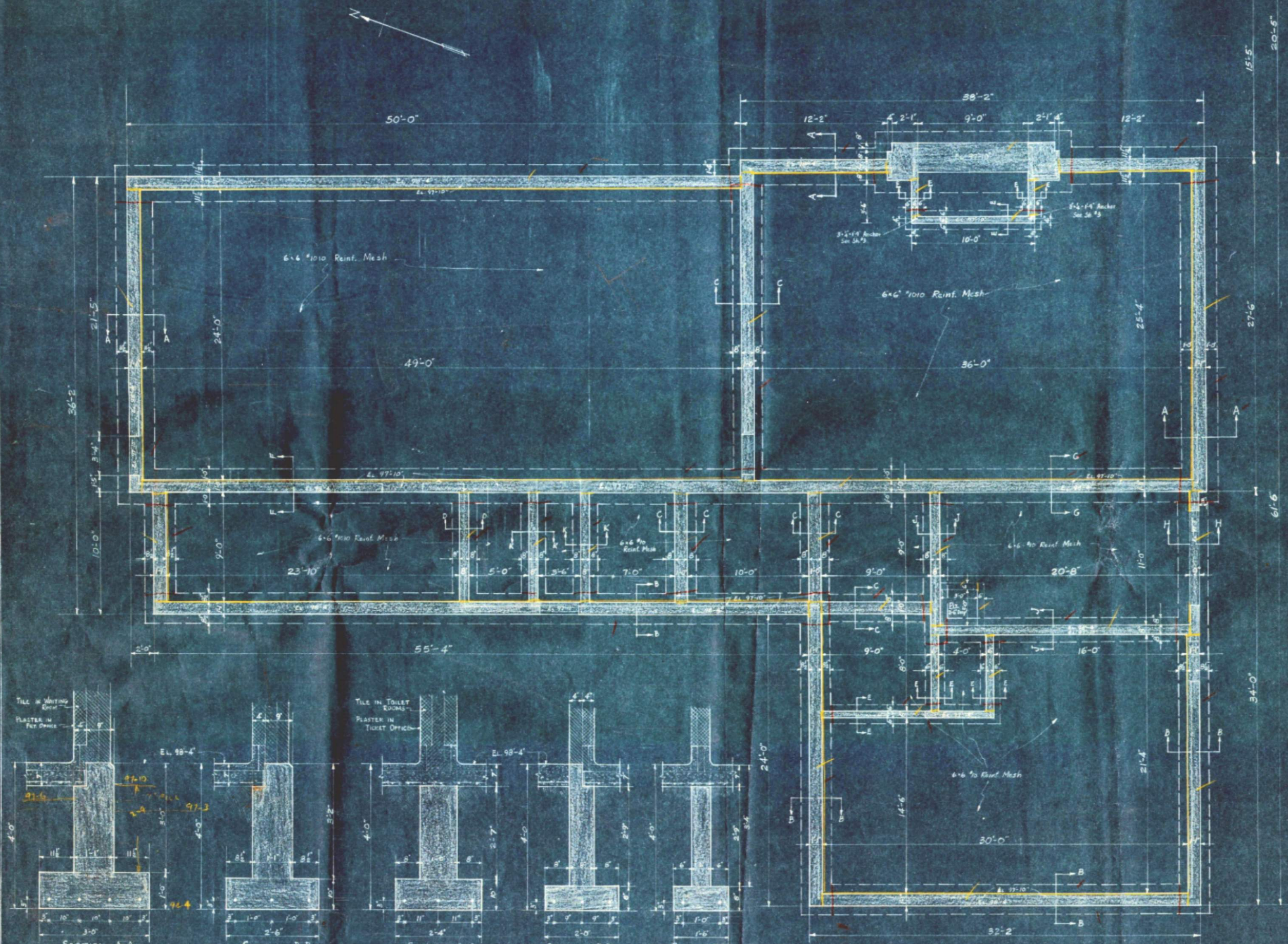
FLOOR PLAN

TRACK

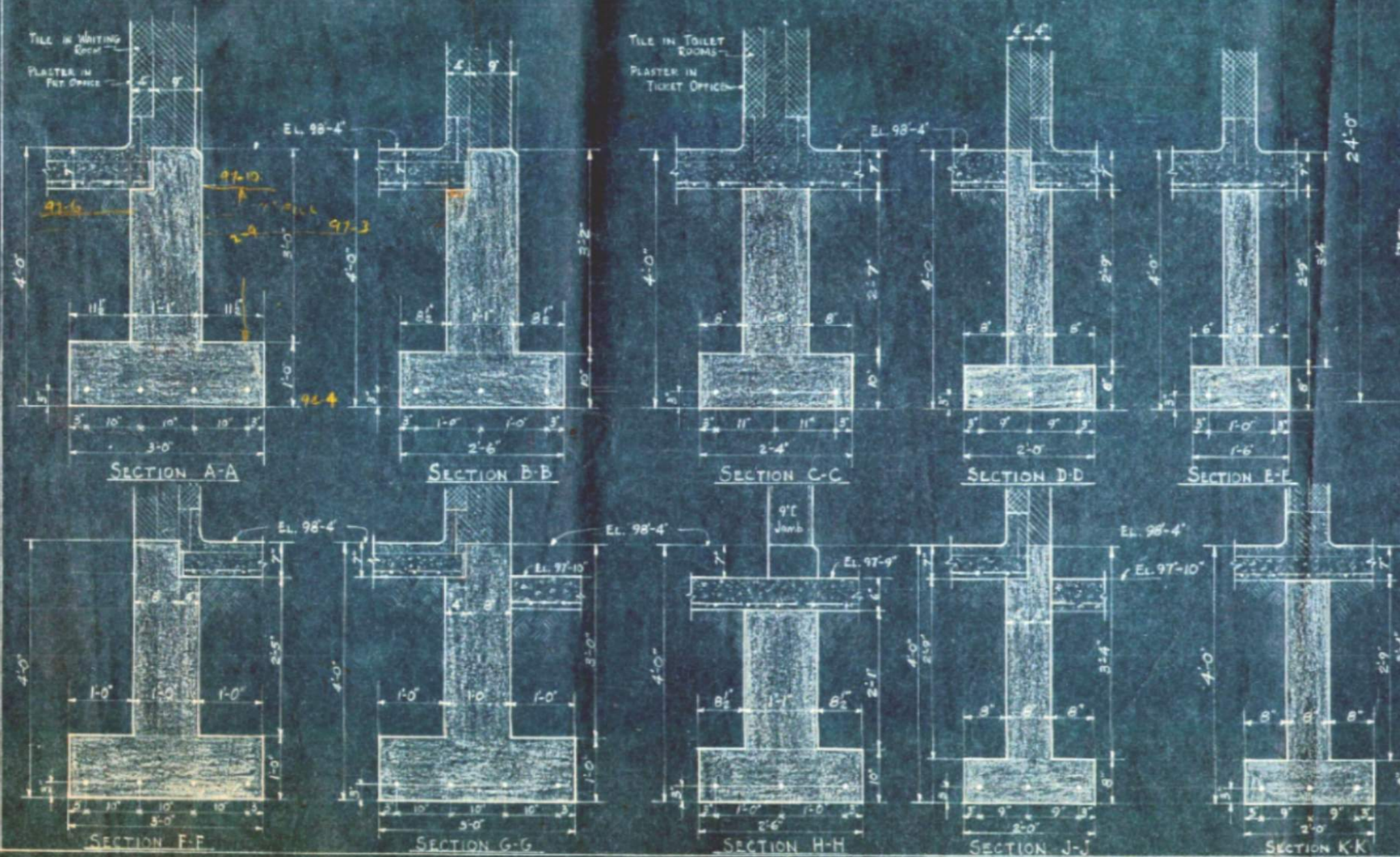


FREIGHT HOUSE 36'-20'
(ARMCO STEEL BLDG.)

FLOOR PLAN



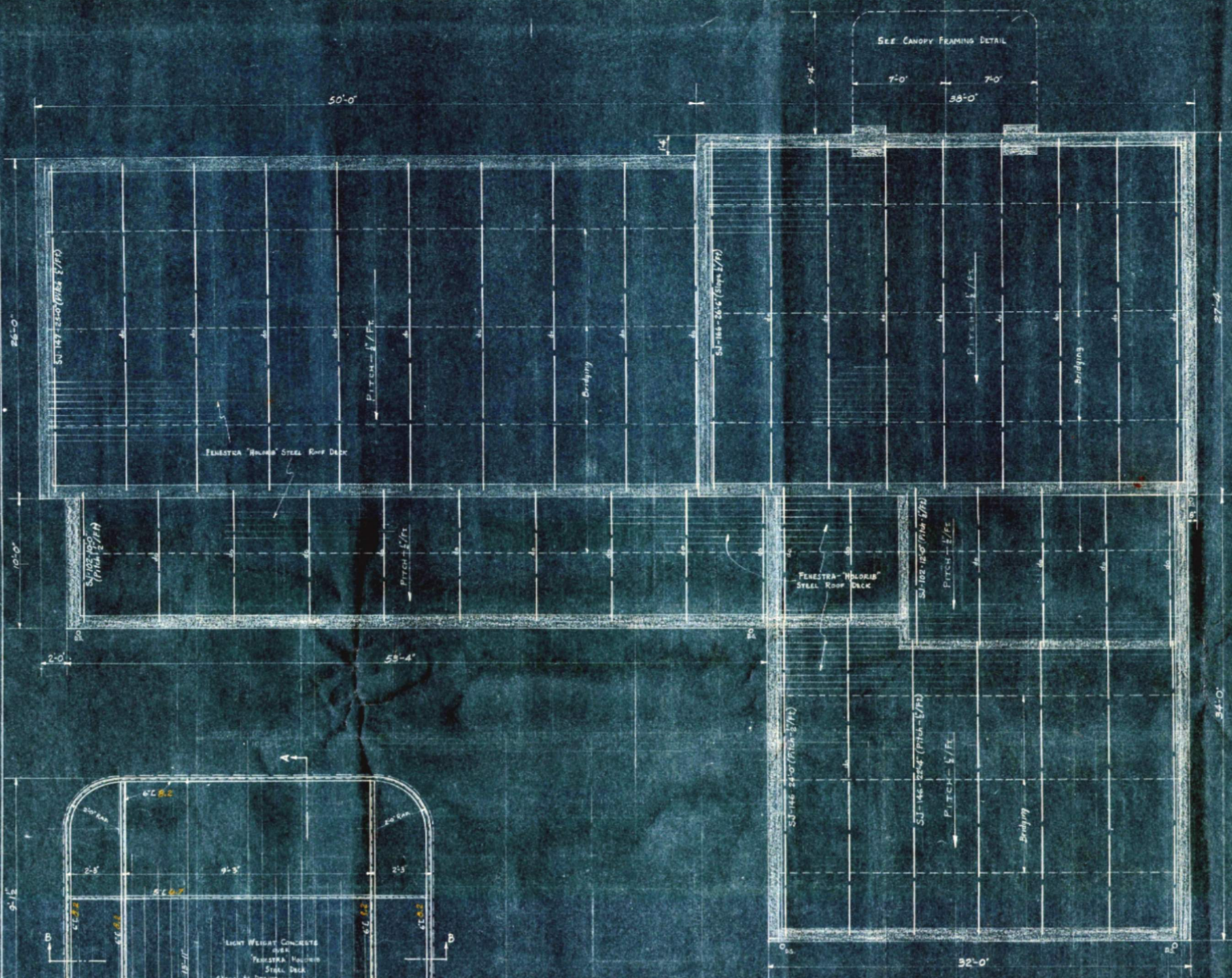
FOUNDATION PLAN
SCALE: 1/4" = 1'-0"



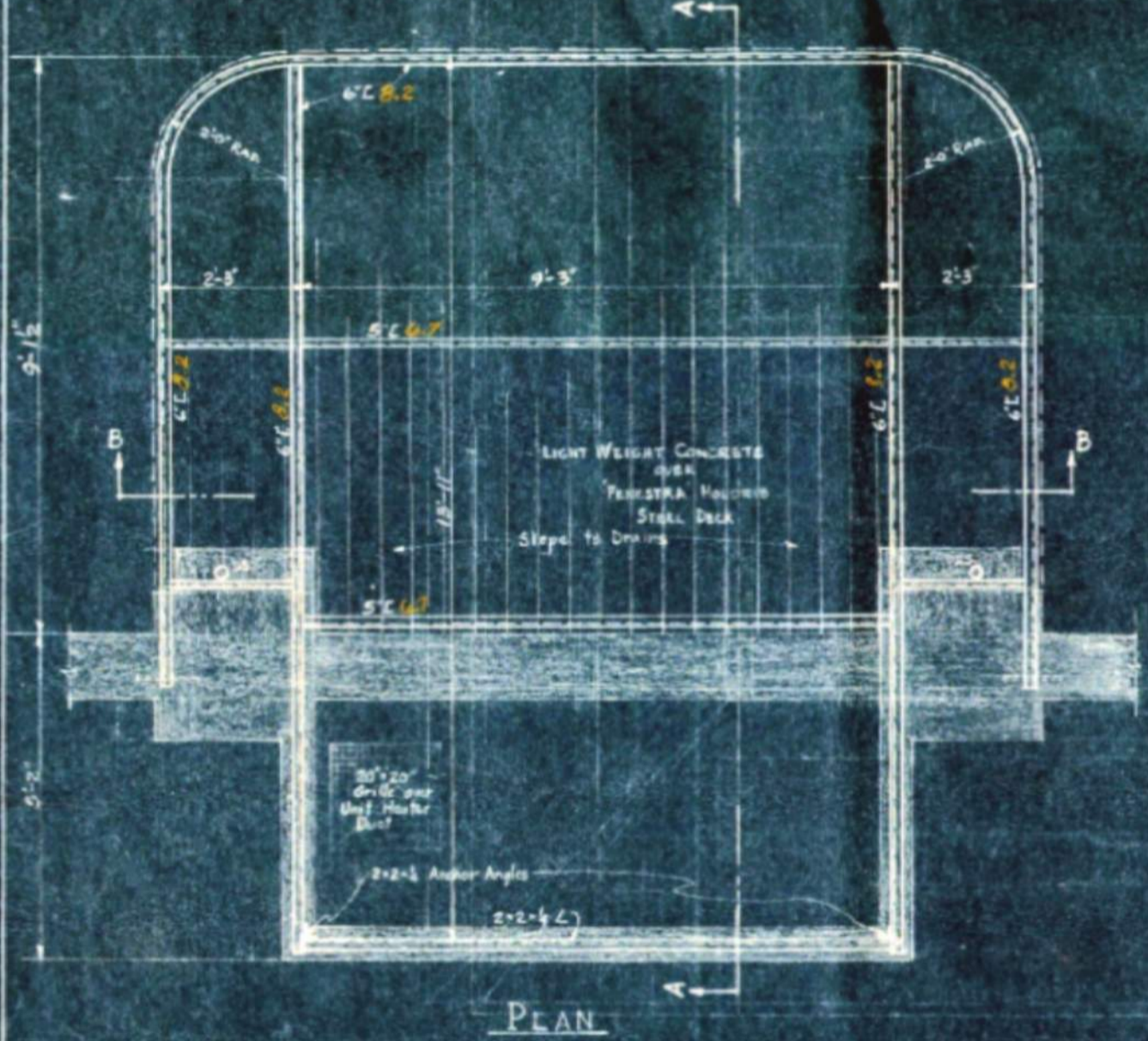
NOTE:
ALL REINFORCING RODS - #4
CONCRETE FLOOR REINF WITH 6x6 MESH
FINISH FLOOR TO BE TERRAZED EXCEPT FILE & BAGGAGE ROOMS

SHEET 1 OF 8
ILLINOIS TERMINAL R.R.
PROPOSED STATION
EAST PEORIA, ILLINOIS
OFFICE: CHIEF ENGINEER
SCALE: 1/4" = 1'-0"

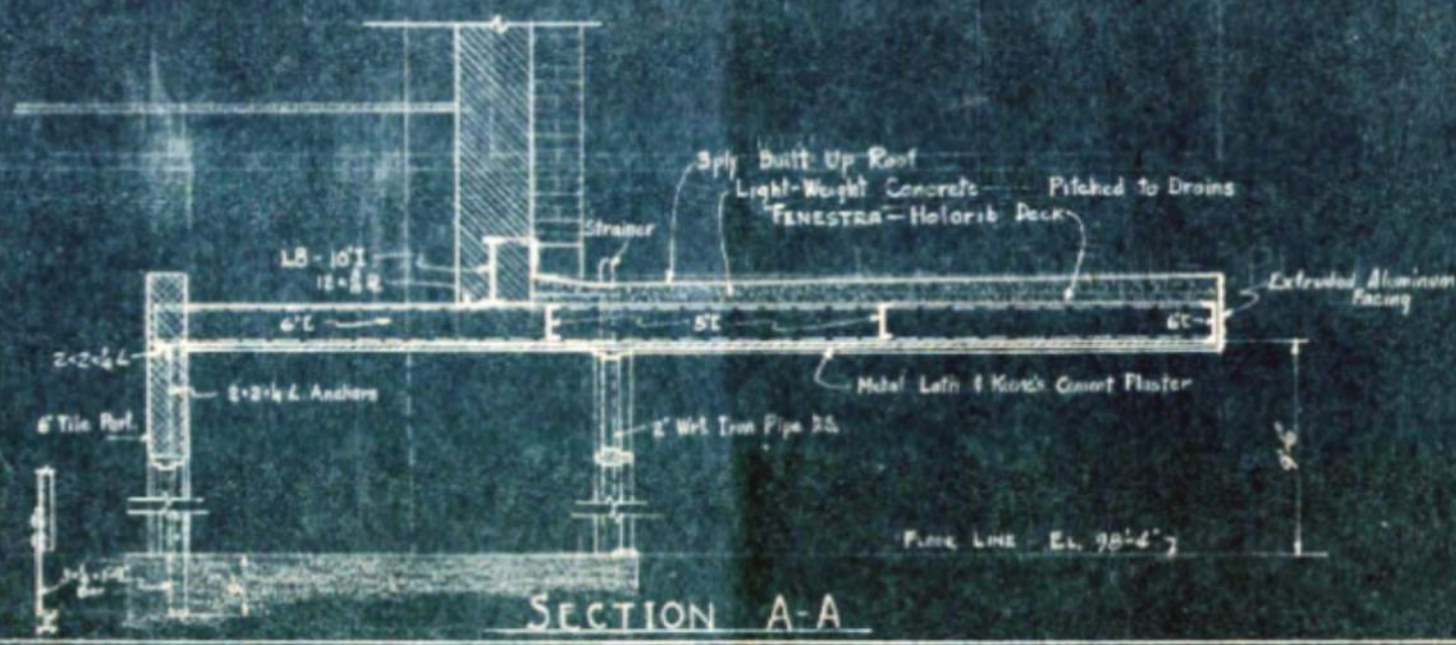
#2



ROOF FRAMING PLAN
SCALE: 1/4" = 1'-0"



SECTION B-B



SECTION A-A

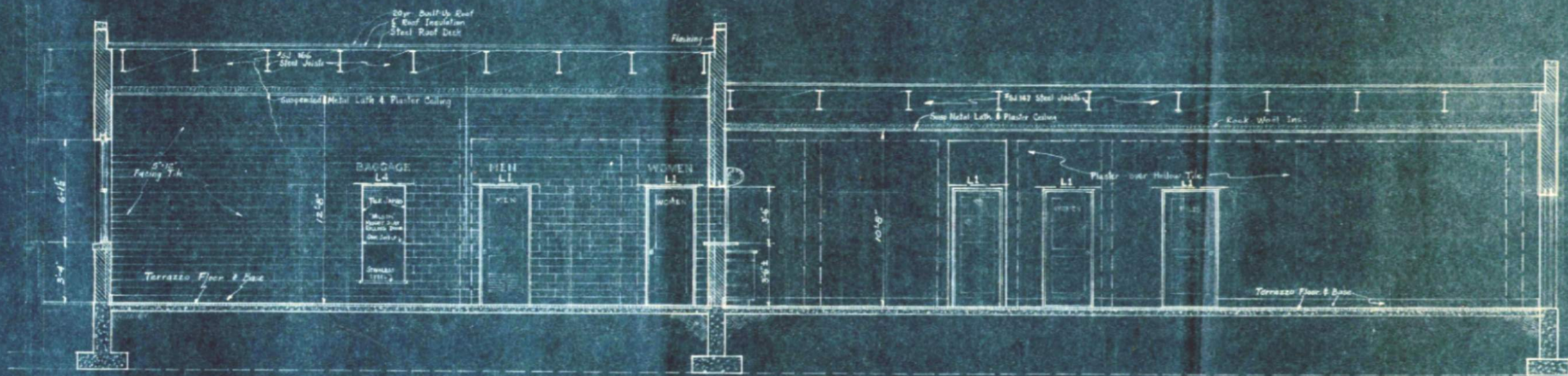
LINTEL SCHEDULE				
MARK	No. Roofs	SECTION	LENGTH	REMARKS
L1	17	24'-4 3/4" JL	4'-4"	For Doors & 3' W.
L2	2	24'-5 3/4" JL	6'-4"	For Machine Wks
L3	1	24'-5 3/4" JL	6'-6"	For Ticket Wks
L4	6	24'-4 3/4" JL	3'-10"	For 2' W.
L5	1	7'1 8/8" JL	9'-6"	For 1st Door
L6	3	32'-5 3/4" JL	10'-6"	Concrete (optional) For 1st Wks
L7	2	8'1 8/8" JL	9'-6"	For Glass Doors
L8	1	10'1 8/8" JL	11'-0"	For 1st Entrance

STEEL JOIST SCHEDULE		
No. Roofs	SIZE	LENGTH
9	SJ-166	26'-6"
10	SJ-147	25'-0"
2	SJ-146	24'-0"
5	SJ-146	22'-4"
5	SJ-102	12'-0"
12	SJ-102	10'-0"

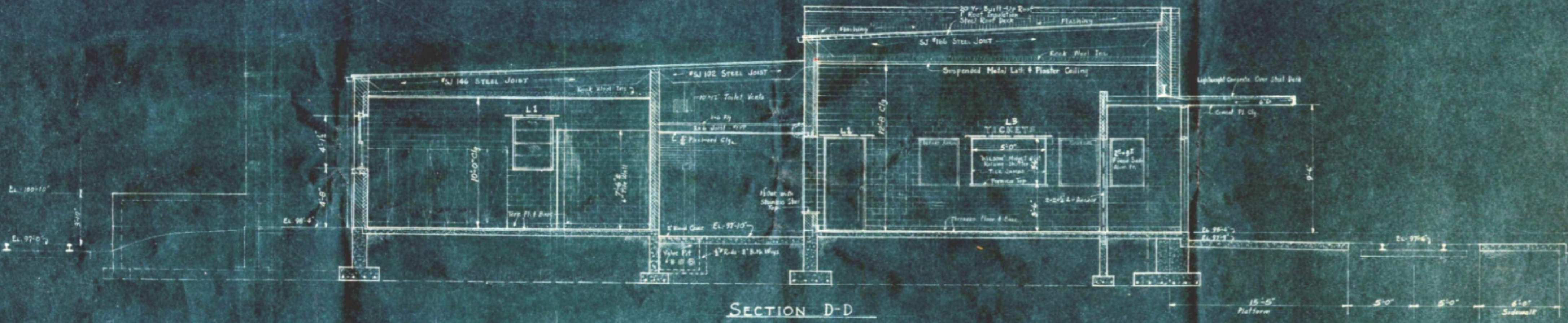
NOTE: ALL WELDS CONSTRUCTION - ONE WELD

SHEET 5 OF 8
ILLINOIS TERMINAL R.R. CO.
PROPOSED STATION
EAST PEORIA, ILLINOIS
OFFICE: CHIEF ENGR. ST. LOUIS, MO.
SCALE: 1/4" = 1'-0" & 1/8" = 1'-0"

4-5-03

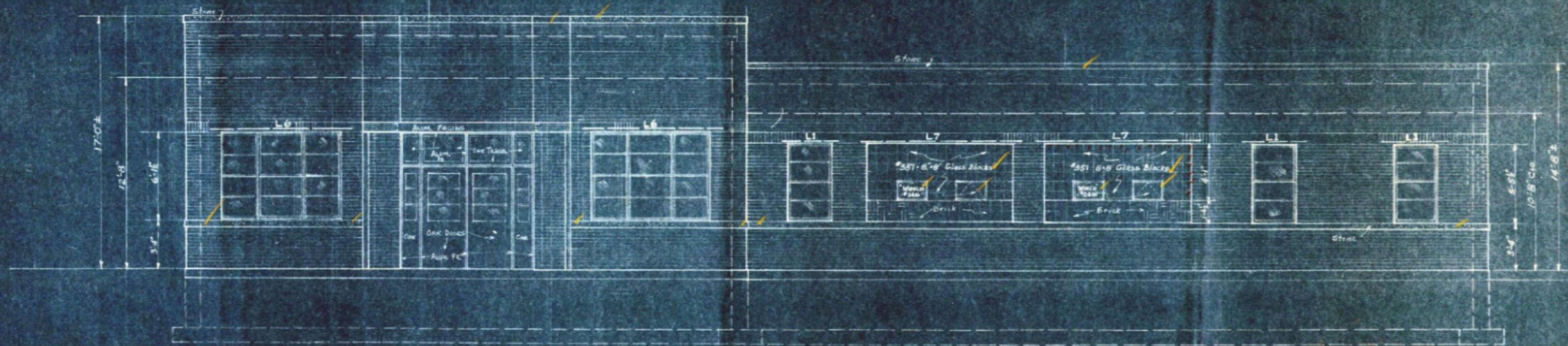


SECTION C-C

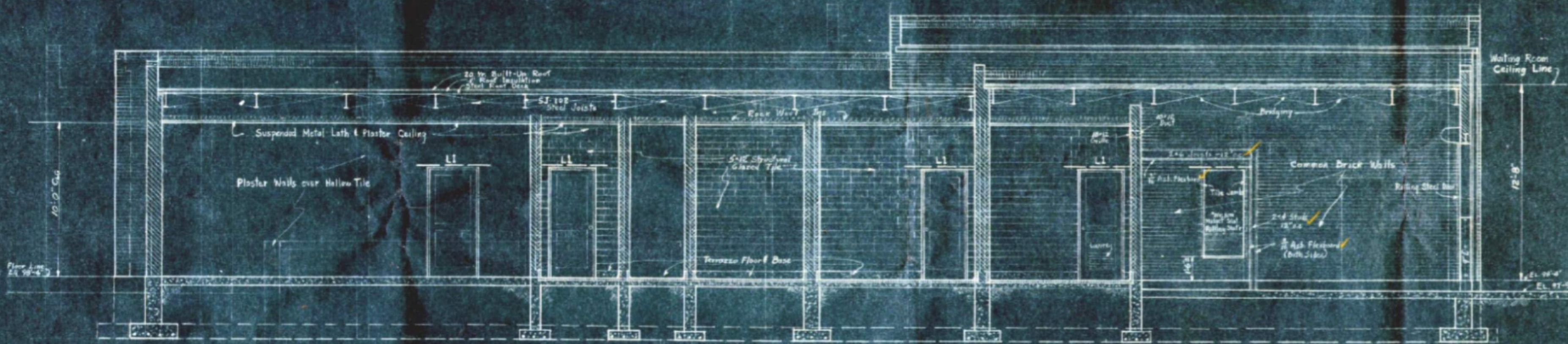


SECTION D-D

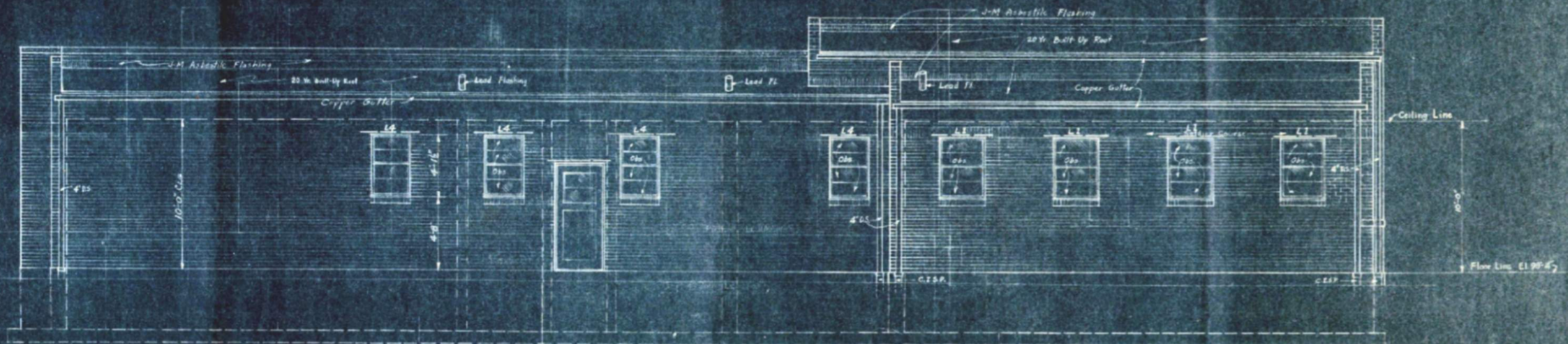
DOOR SCHEDULE				
MARK	NO.	SIZE	TYPE	HARDWARE
A	2	3'-7 1/2"	Solid Oak	ALUMINUM
B	2	3'-7 1/2"	Solid Birch	ALUMINUM
C	3	3'-6" x 7'-0"	Hollow Metal	PRELITE STEEL
D	1	3'-0" x 7'-0"	Hollow Metal	PRELITE STEEL
E	1	2'-0" x 7'-0"	do	do
F	4	2'-0" x 7'-0"	Hollow Metal	PRELITE STEEL
G	1	2'-0" x 6'-0"	do	do
H	1	3'-0" x 4'-0"	Wood	do
J	1	3'-0" x 6'-0"	Wood	do
K	1	3'-0" x 9'-0"	Wood	do
L	1	3'-0" x 6'-0"	Wood	do



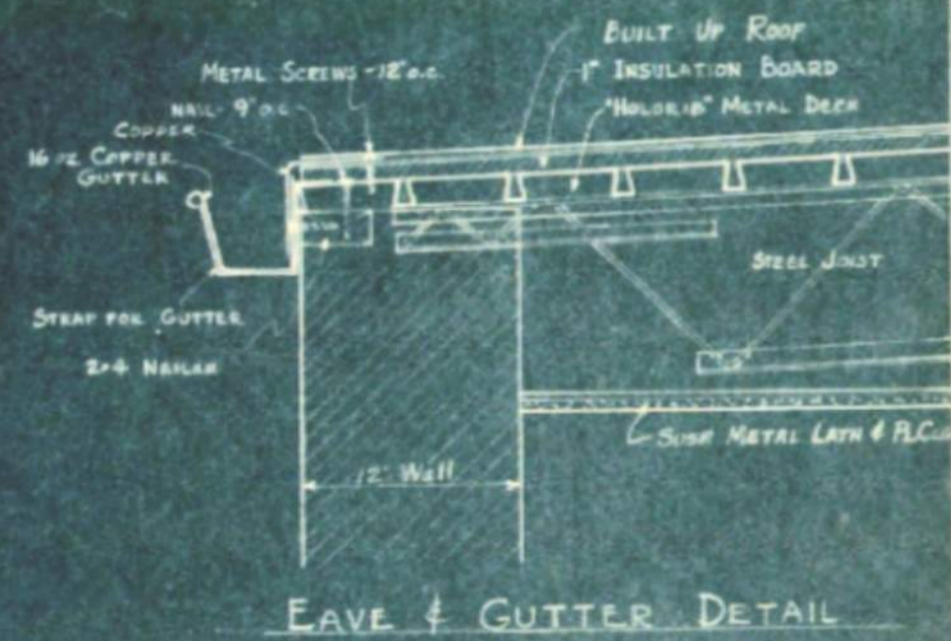
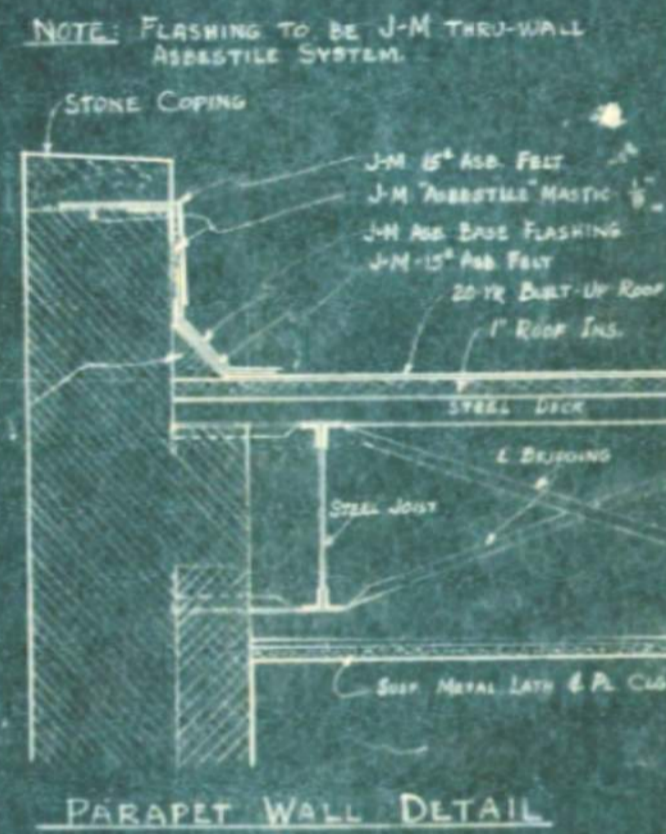
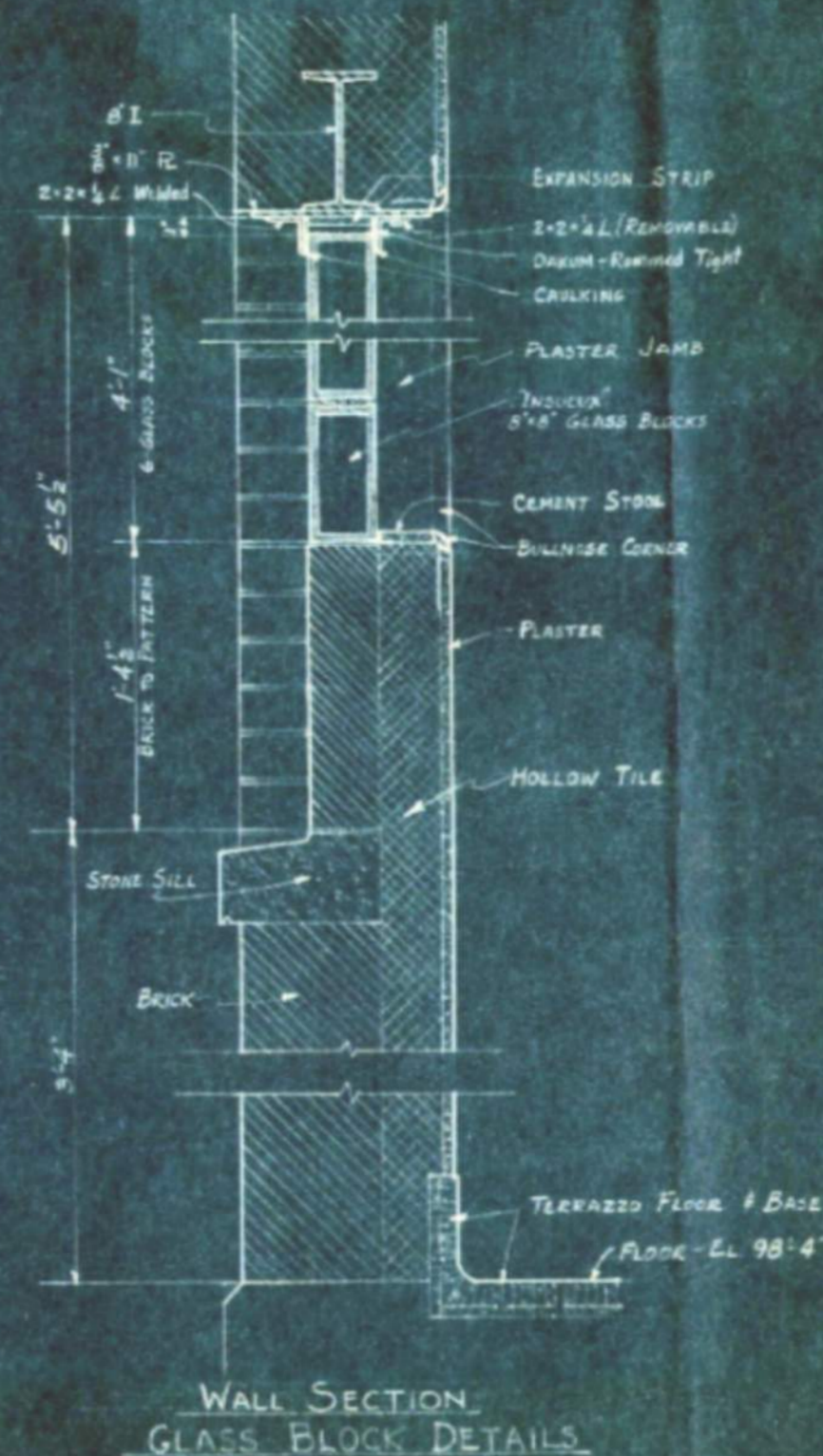
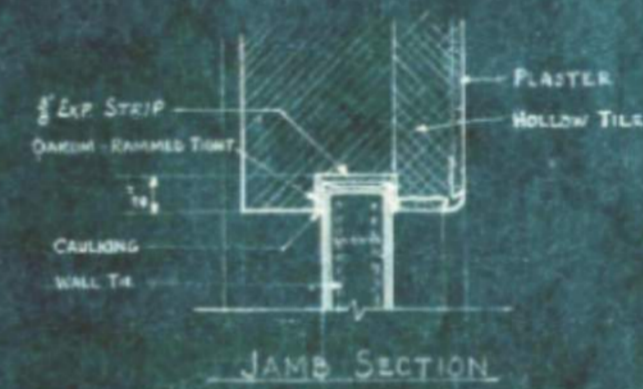
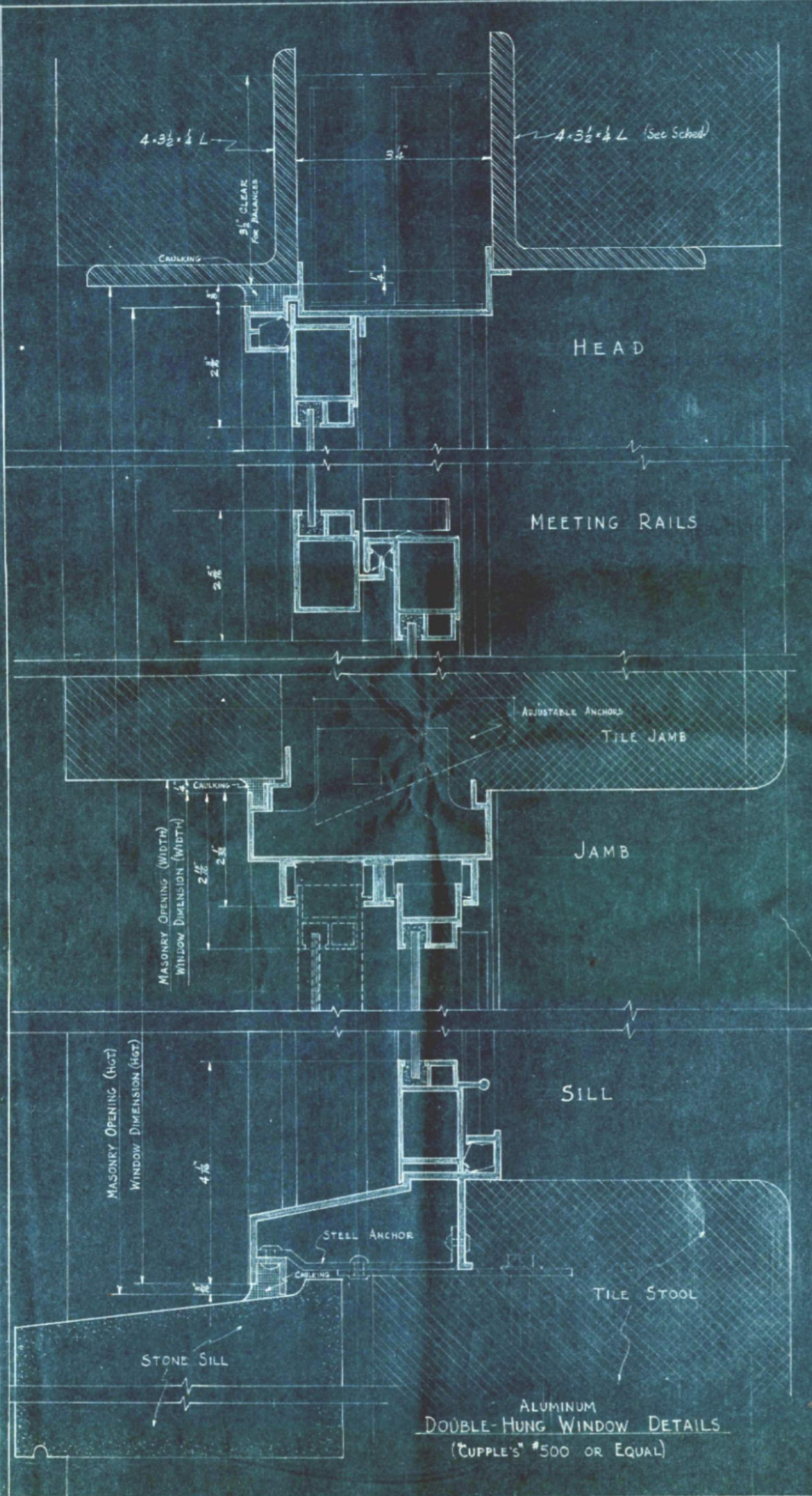
EAST ELEVATION



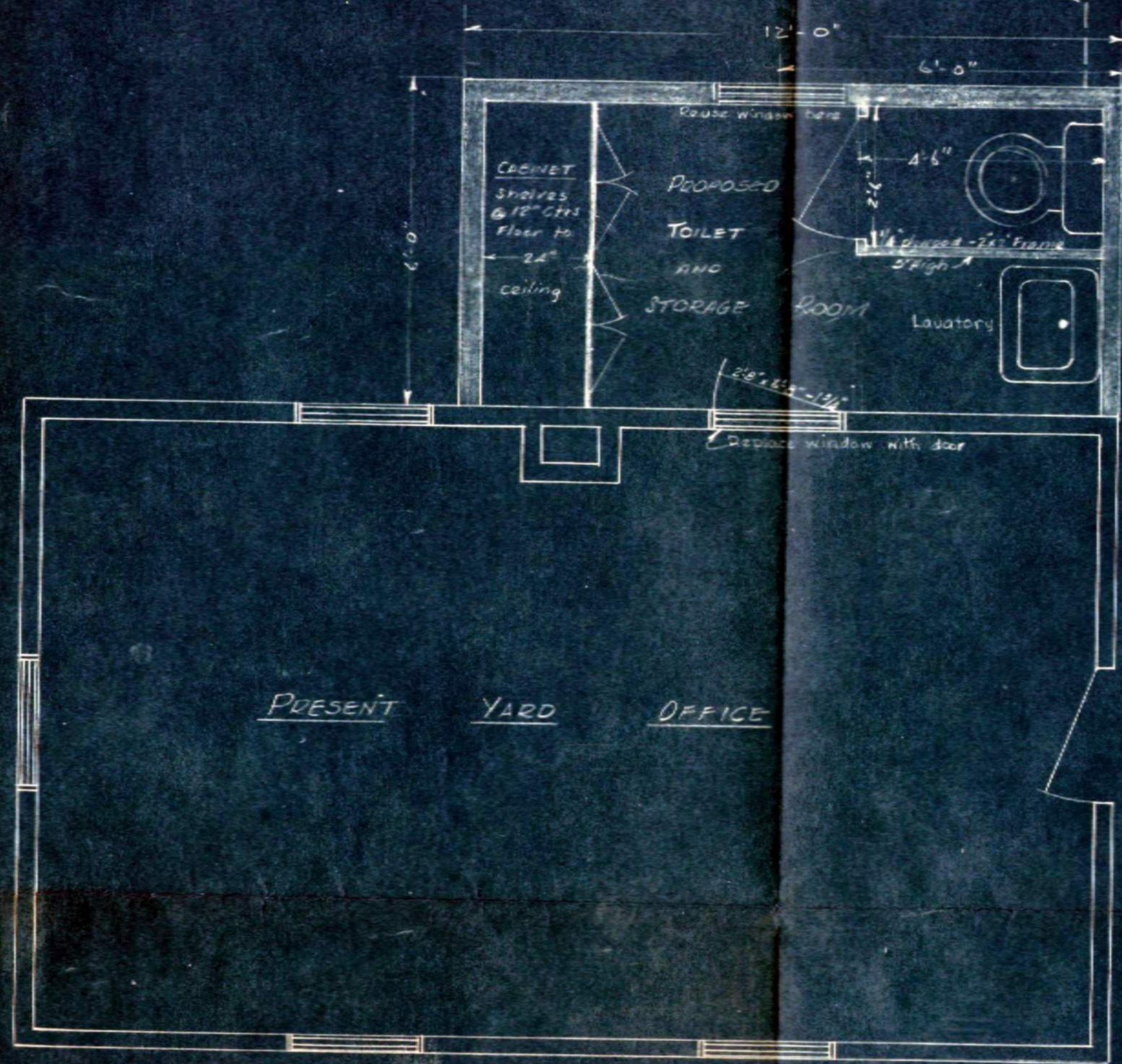
ELEVATION A-A



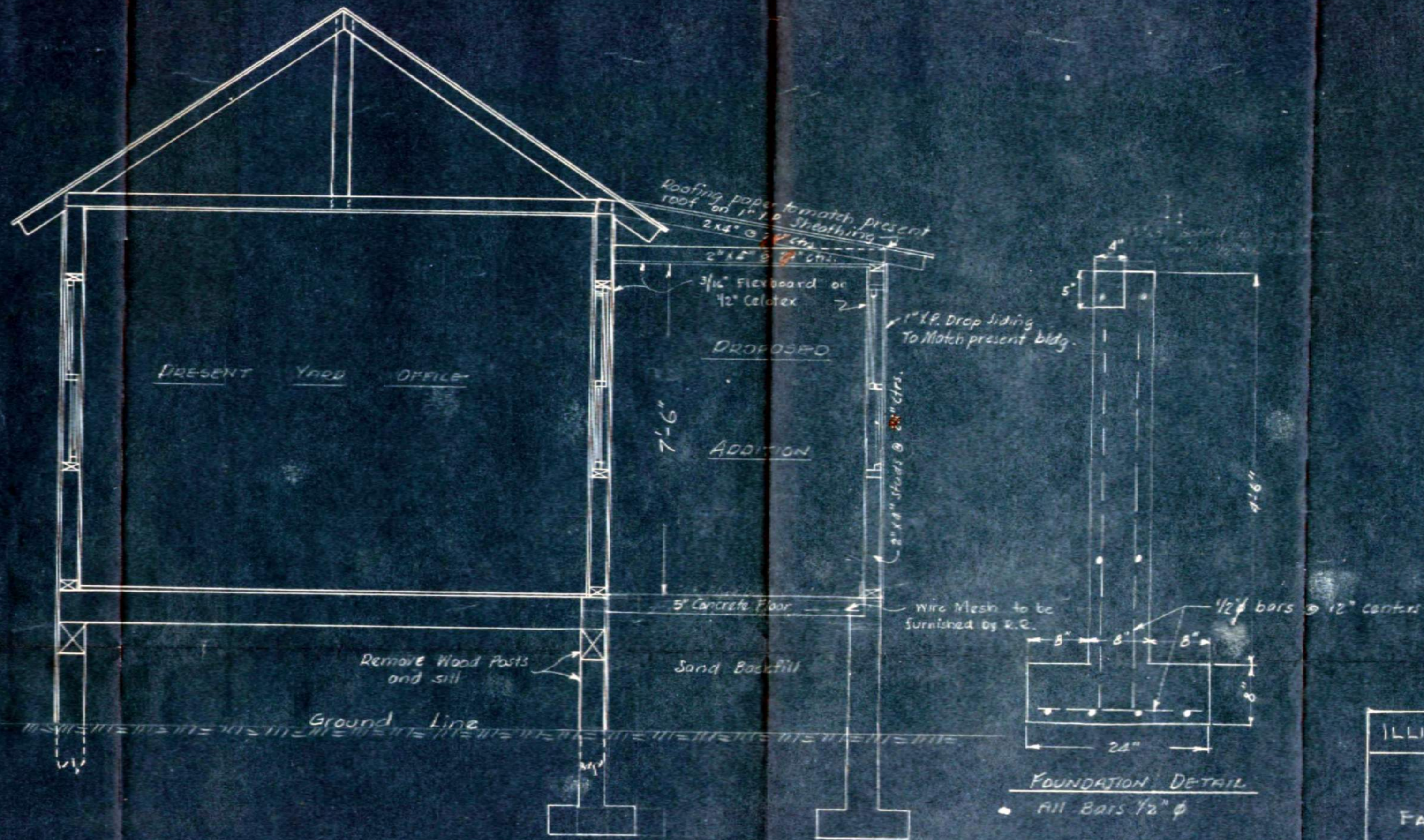
WEST ELEVATION



SHEET 7 OF 8
ILLINOIS TERMINAL R.R. CO.
PROPOSED STATION
EAST PEORIA, ILLINOIS
OFFICE: CHIEF ENGR. ST. LOUIS, MO. 8-19-30
SCALE: 1/2" = 1'-0" FULL SIZE



PLAN
Scale 1/2" = 1'-0"



SECTION
Scale 1/2" = 1'-0"

AFE 1159
ILLINOIS TERMINAL D.R. Co.
PROPOSED ADDITION
TO
FARM CREEK YARD OFFICE
EAST PEORIA ILLINOIS
OFFICE OF CHIEF ENG. ST. LOUIS MO.
SCALE AS SHOWN OCT 12 1945

