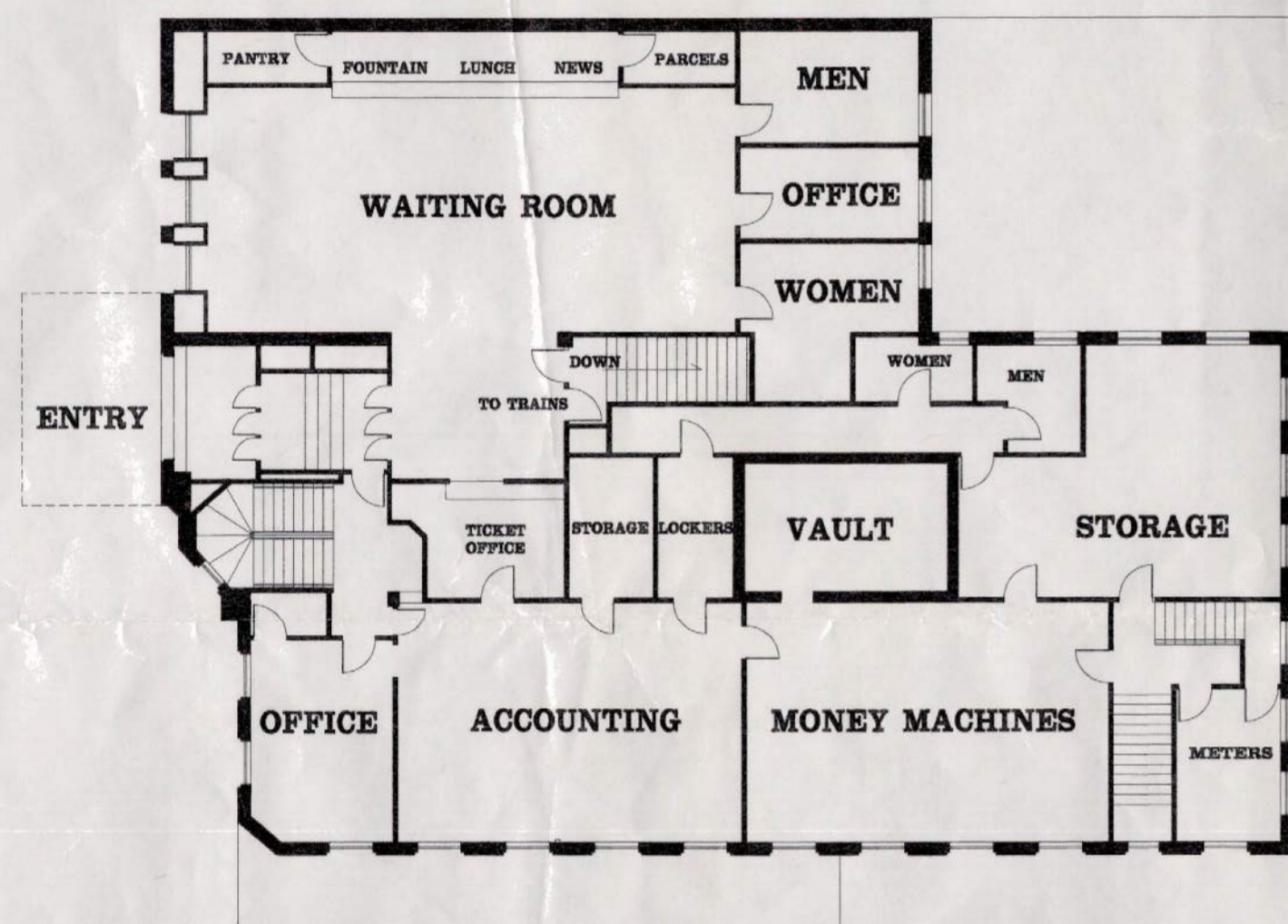
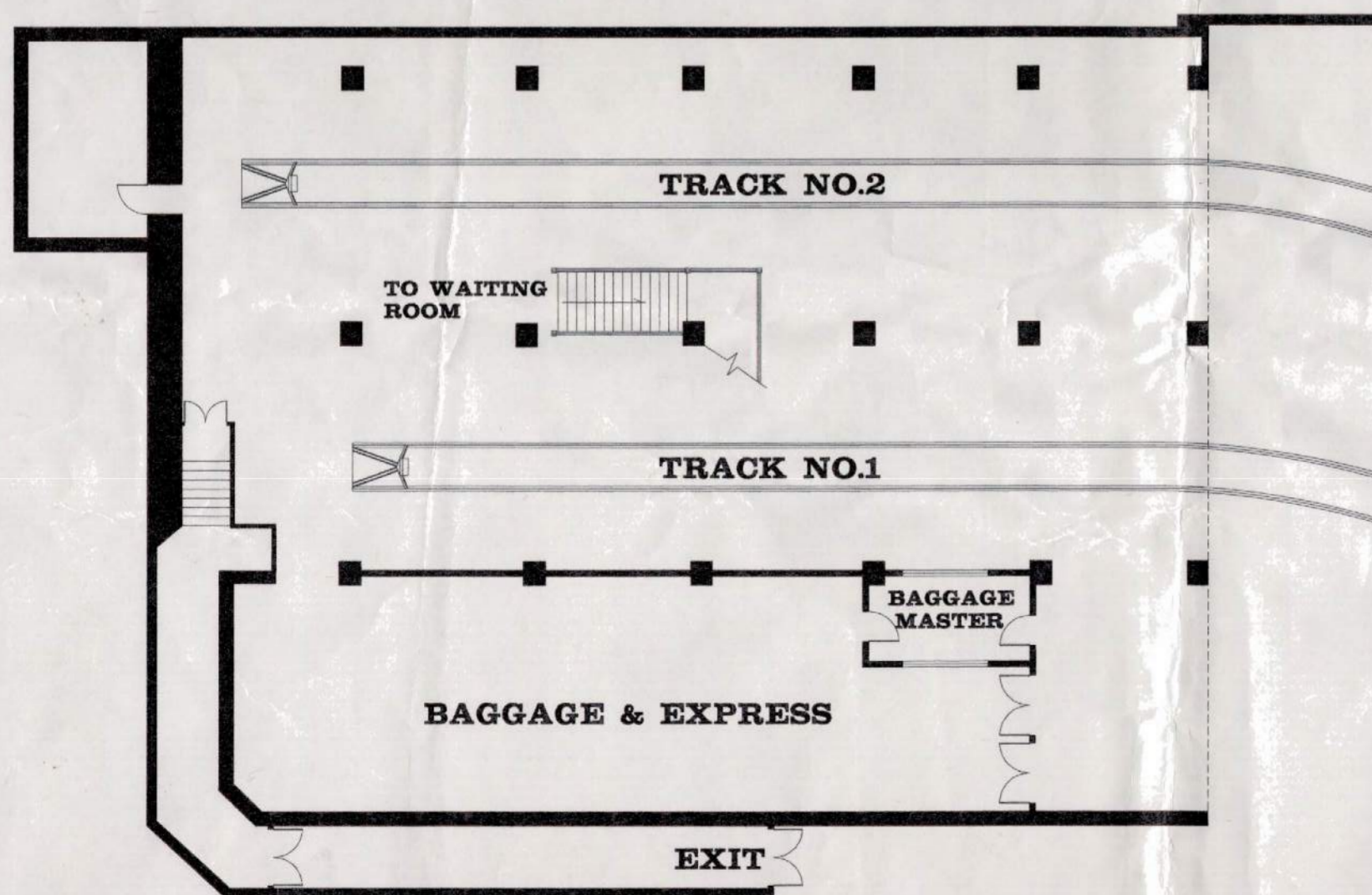


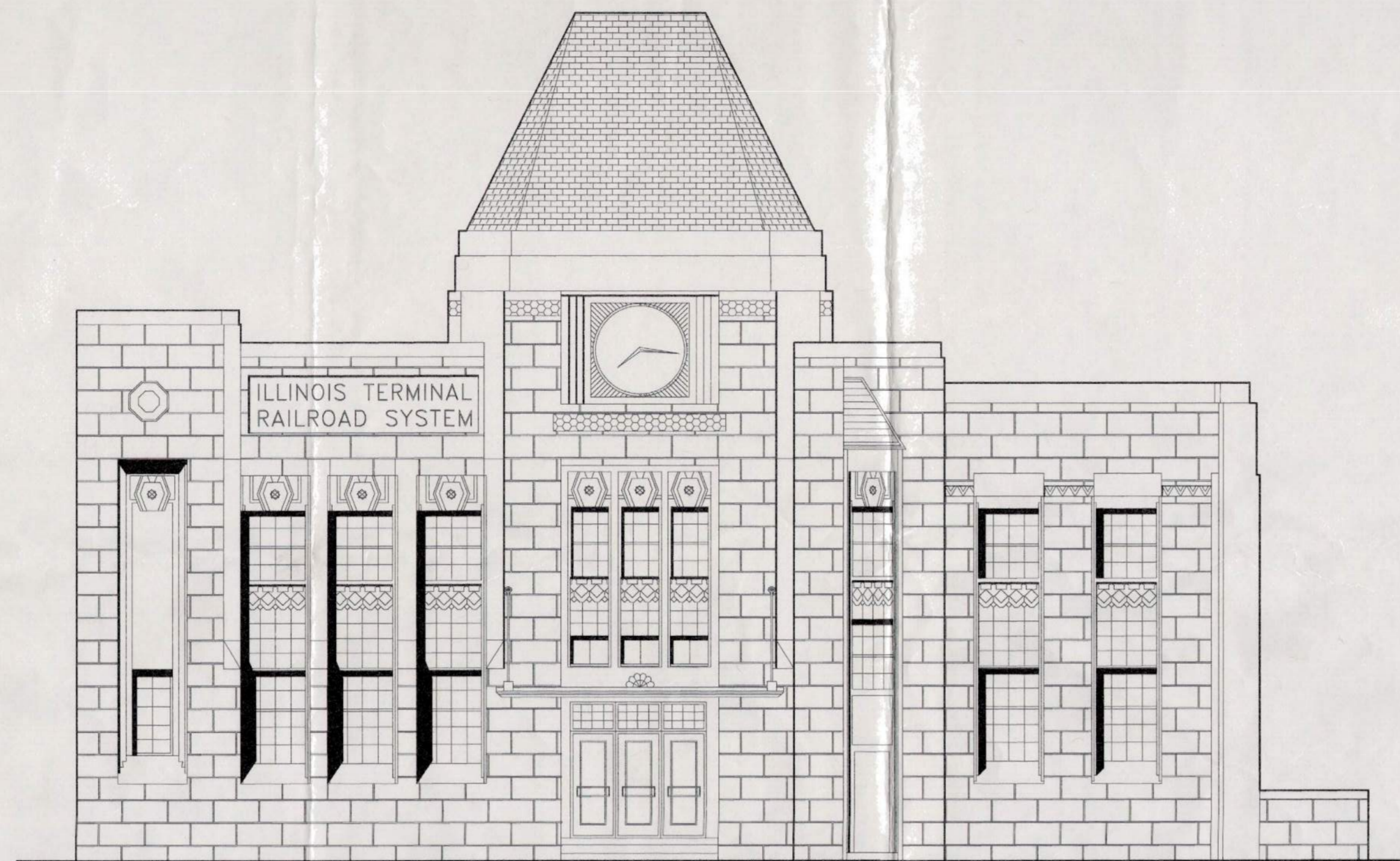
SECOND FLOOR - ADMINISTRATION



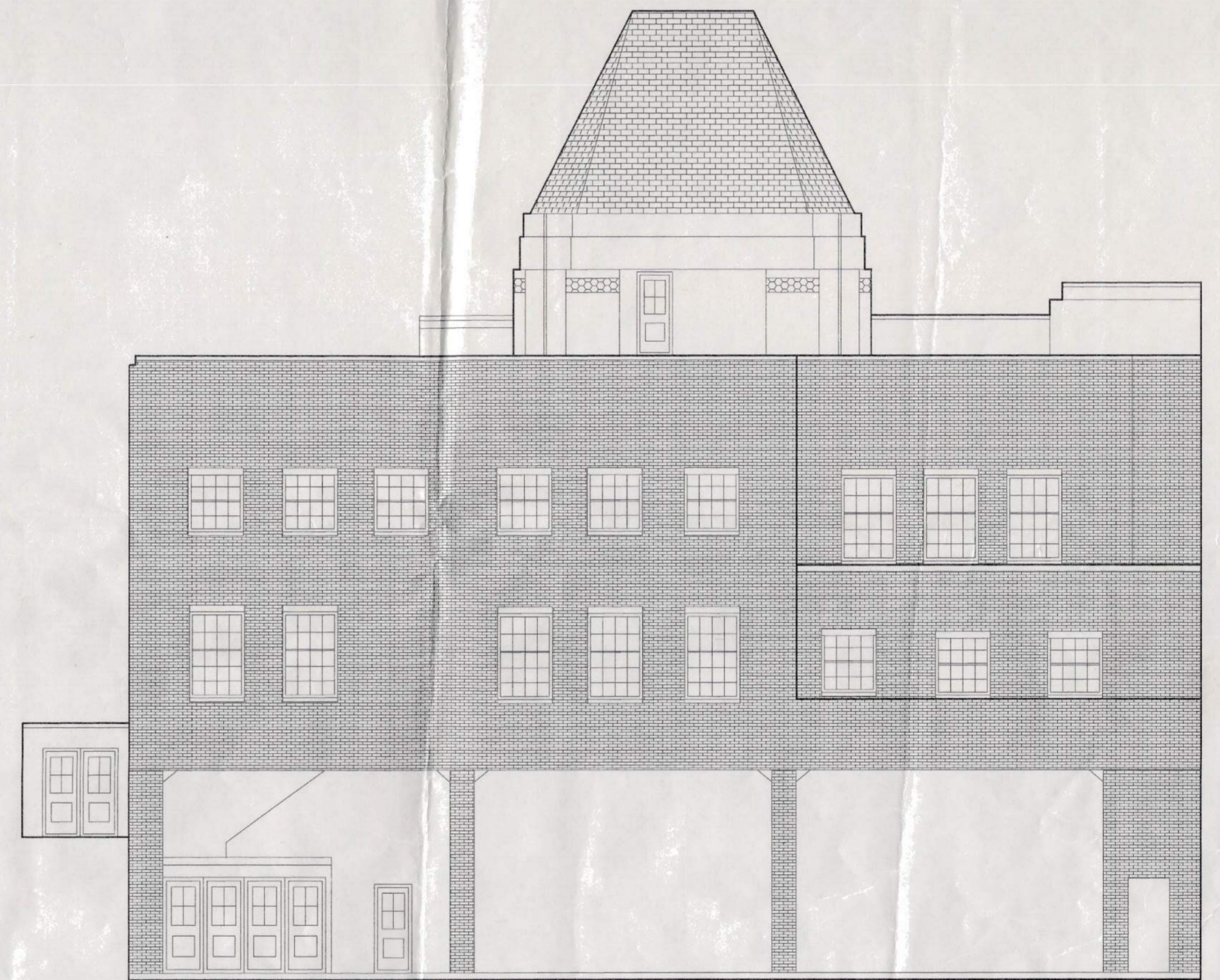
FIRST FLOOR - WAITING ROOM



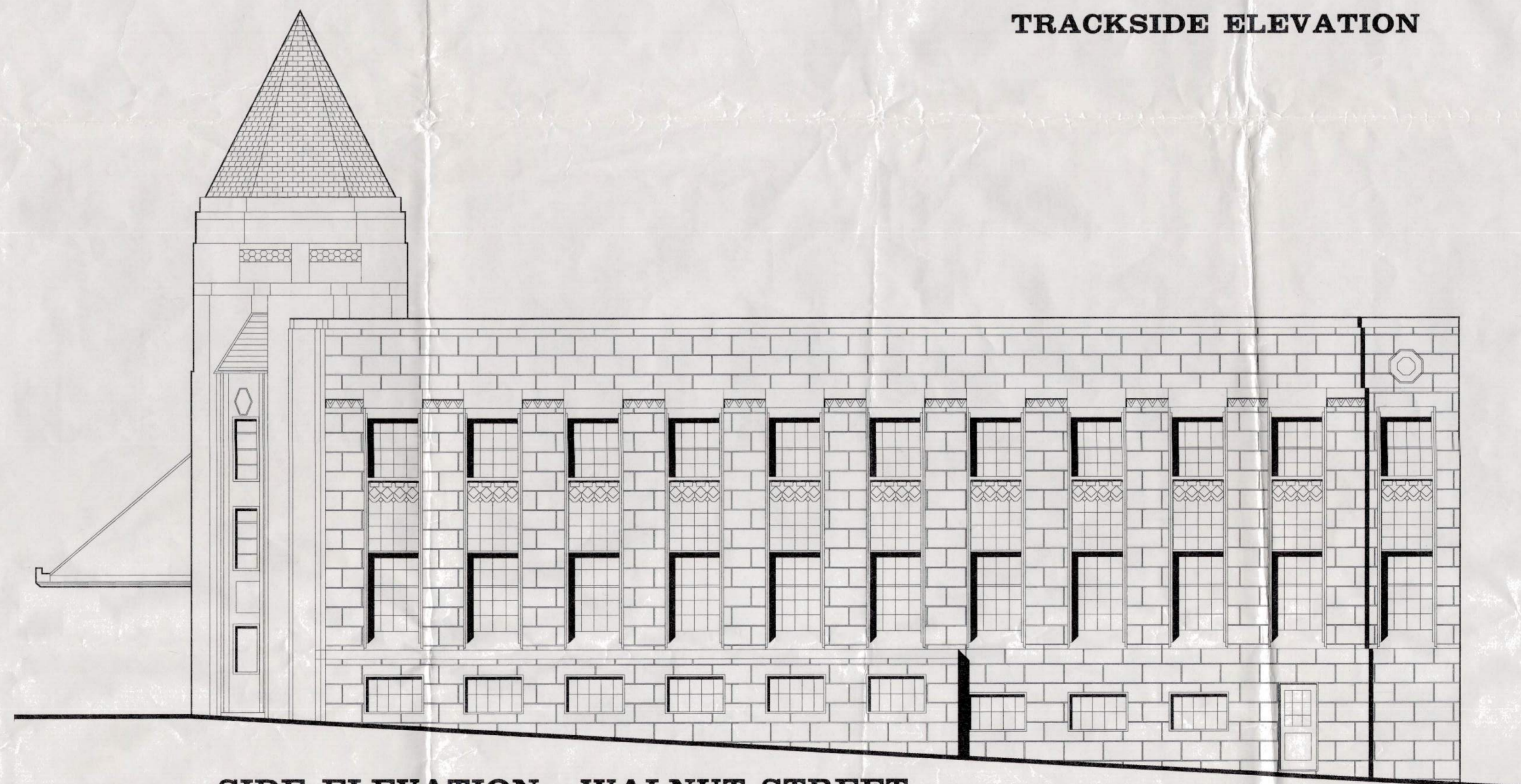
BASEMENT - TRACK LEVEL
Scale 1/16"=1'-0"



FRONT ELEVATION - ADAMS STREET

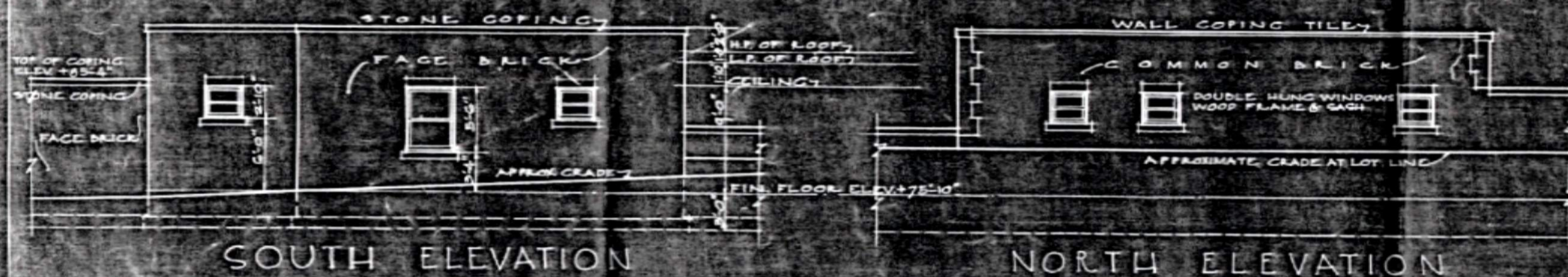


TRACKSIDE ELEVATION



SIDE ELEVATION - WALNUT STREET

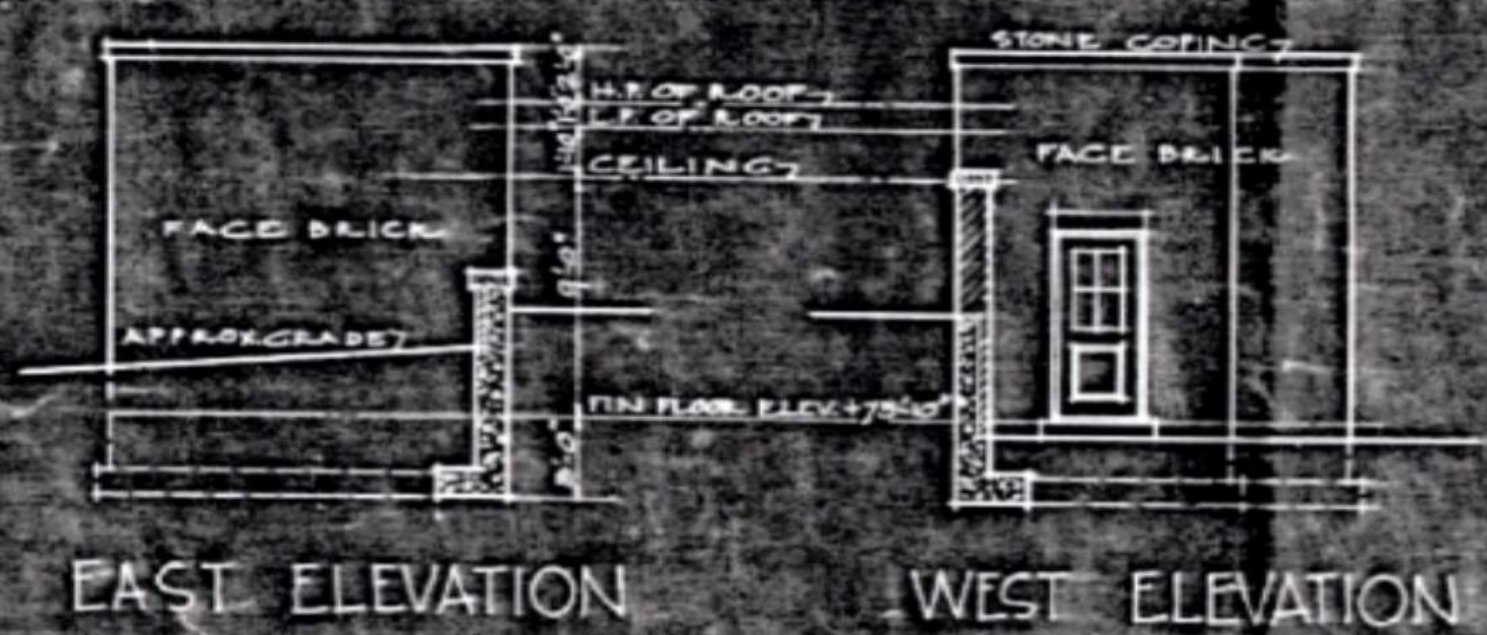
**ILLINOIS TERMINAL RAILROAD
PEORIA STATION - 1930**



SOUTH ELEVATION

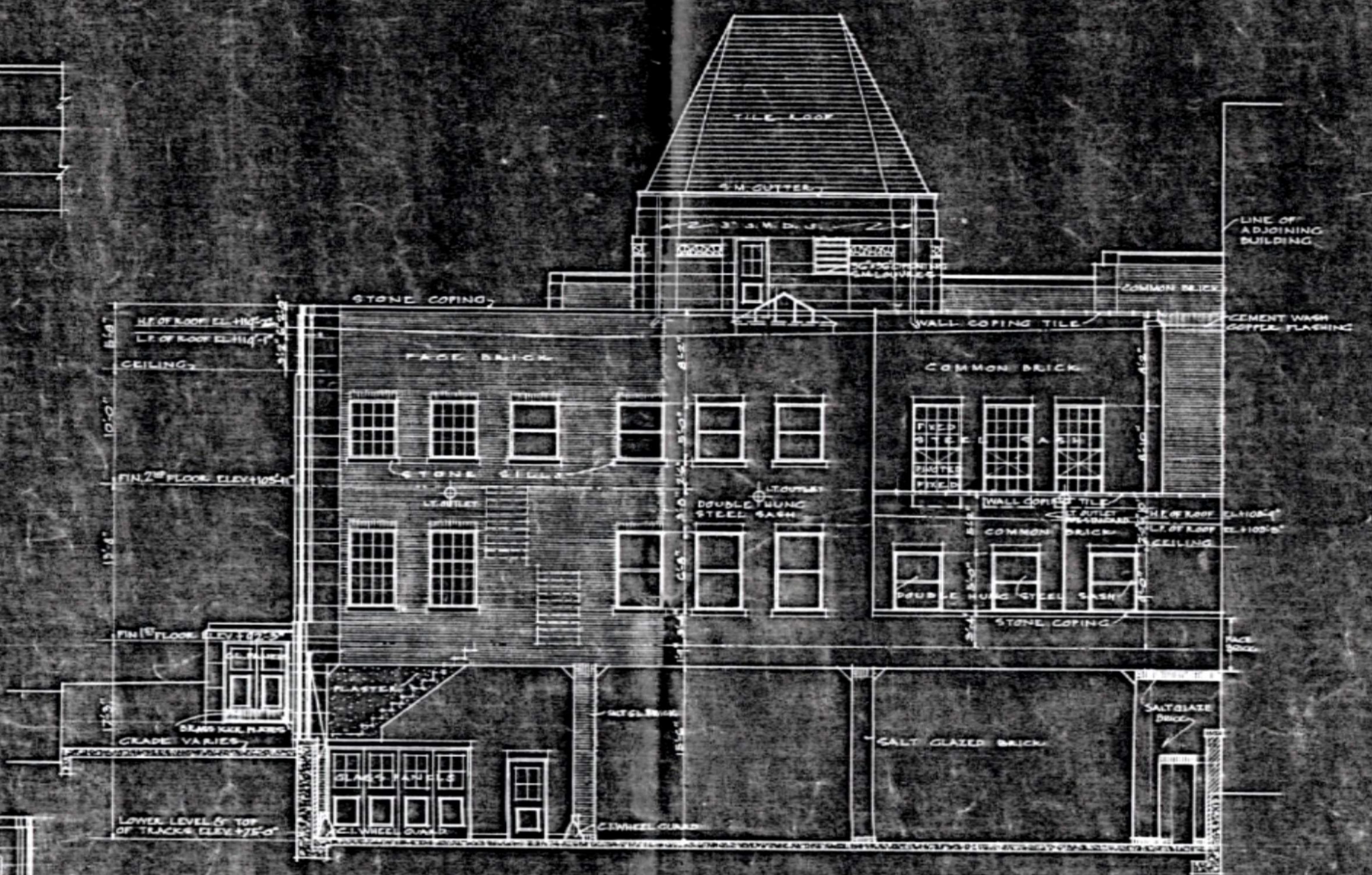
NORTH ELEVATION

ELEVATIONS OF TRAINMEN'S SHOWER AND LOCKER ROOMS
SCALE $\frac{1}{8}'' = 1'-0''$

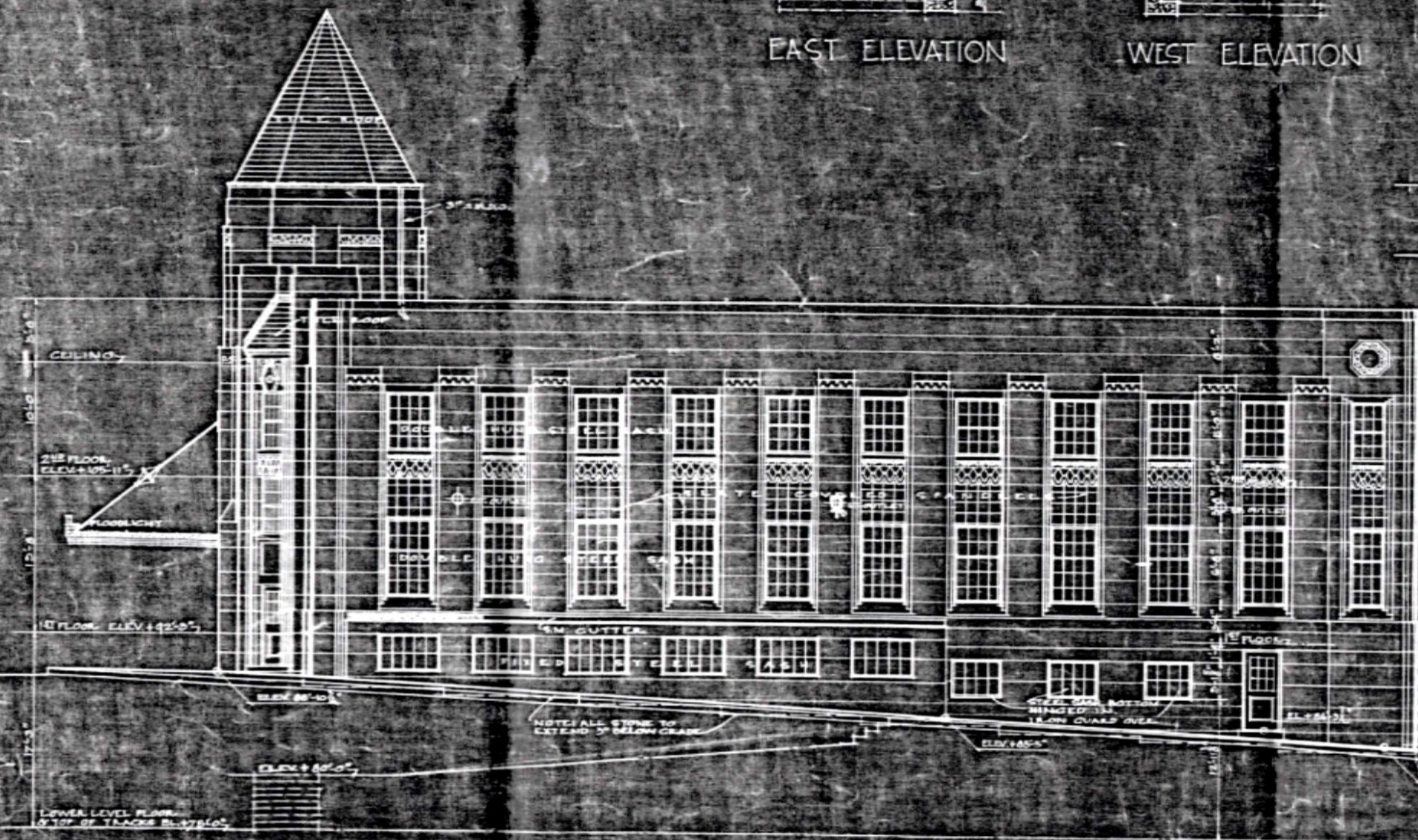


EAST ELEVATION

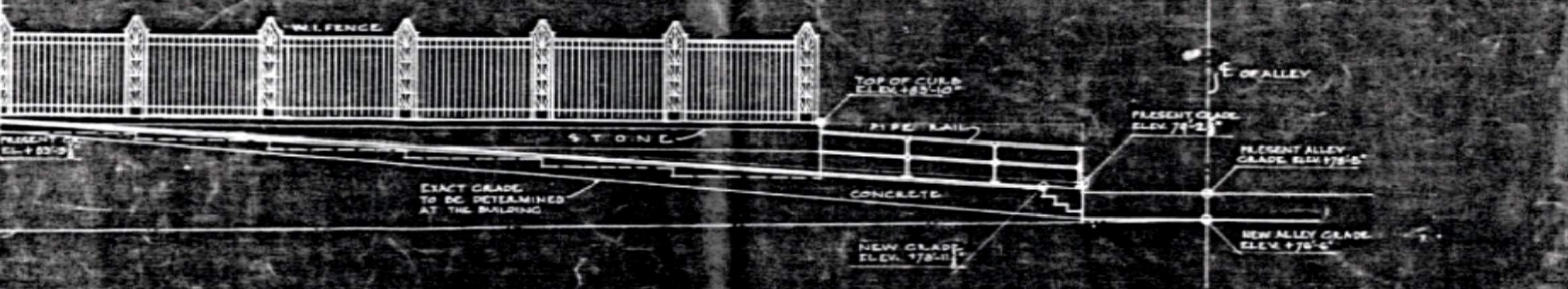
WEST ELEVATION



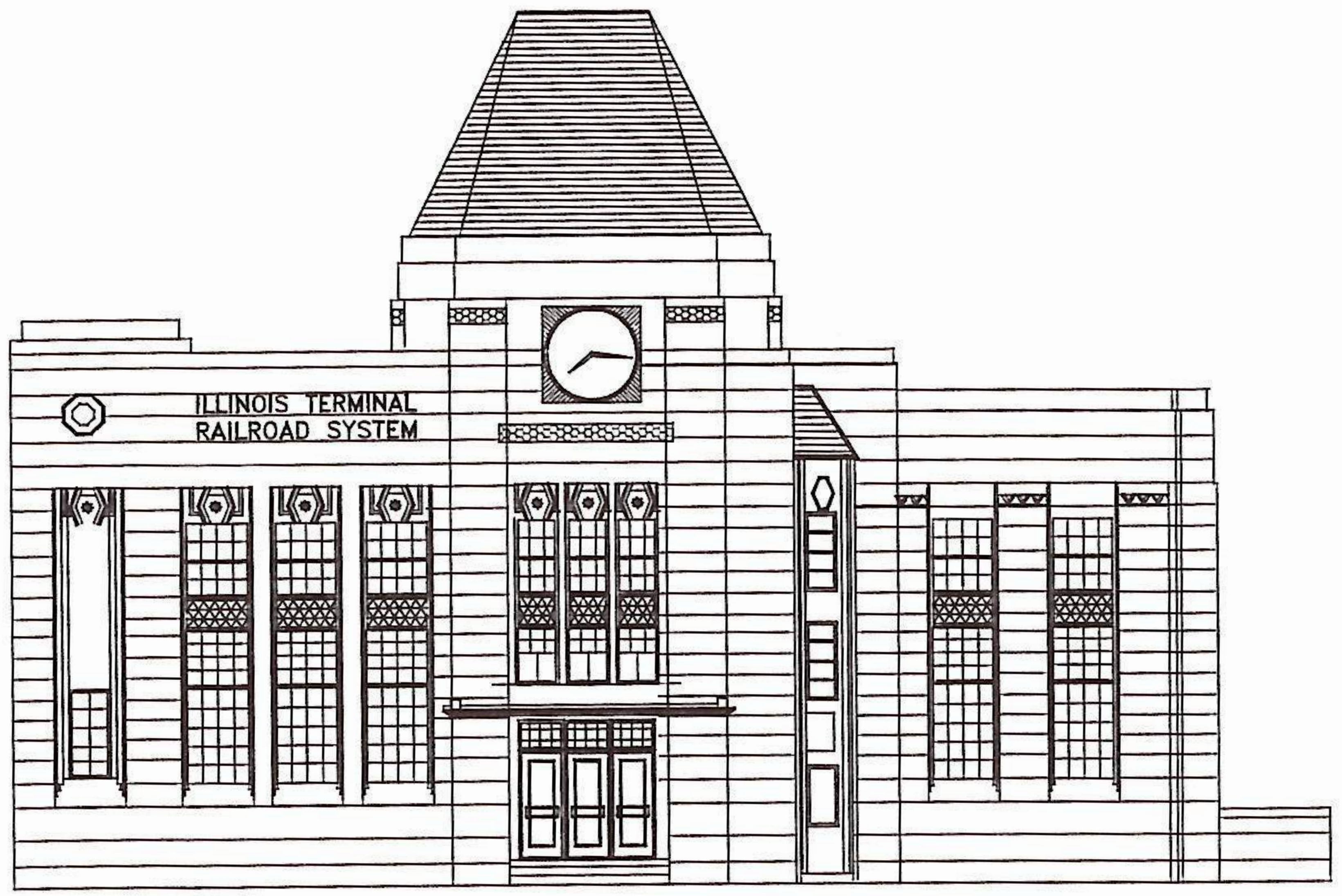
SOUTH EAST (ALLEY) ELEVATION
SCALE $\frac{1}{8}'' = 1'-0''$



WALNUT STREET ELEVATION
SCALE $\frac{1}{8}'' = 1'-0''$



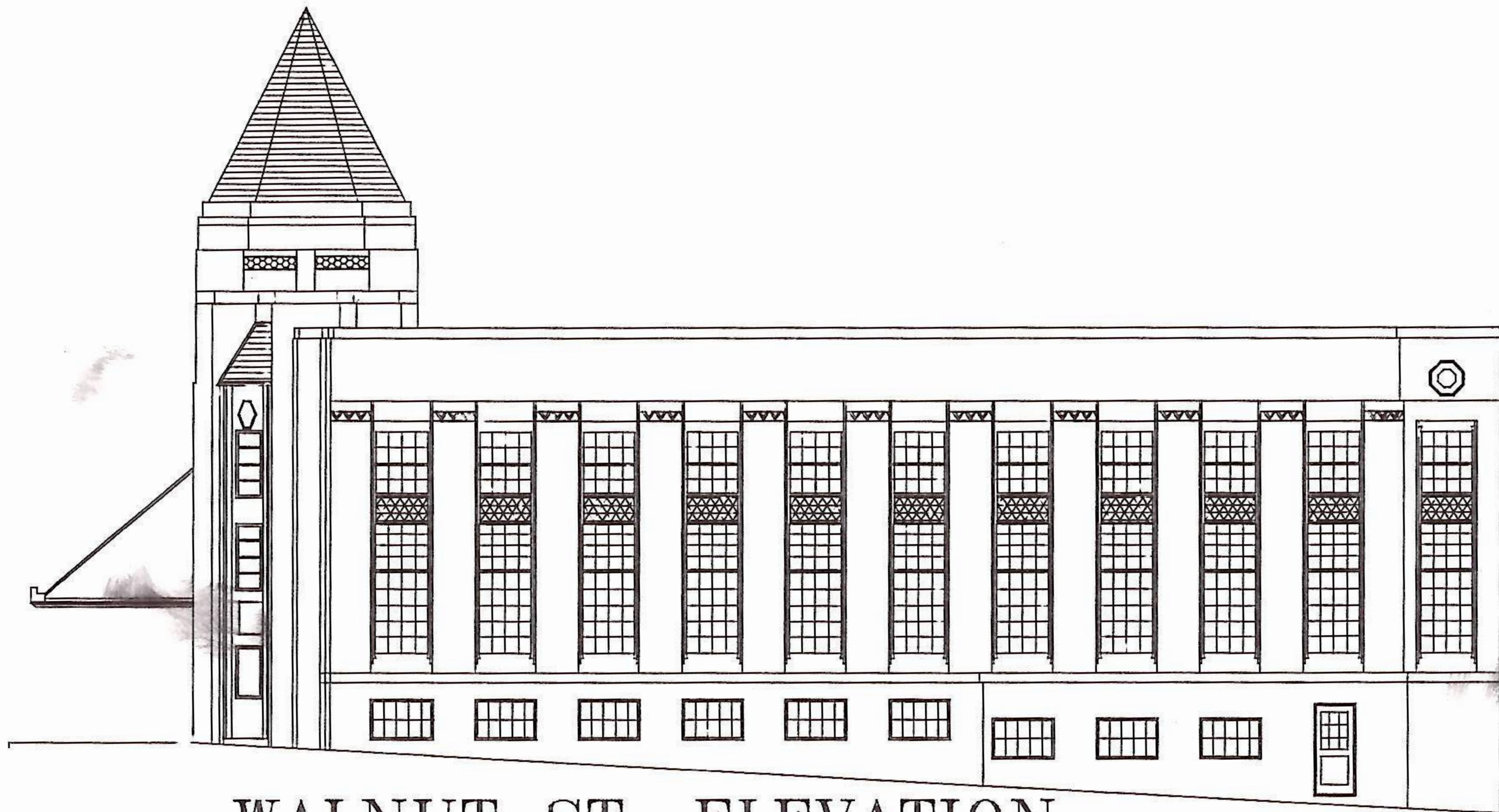
PEORIA STATION FOR THE ILLINOIS TERMINAL RAILROAD SYSTEM COR. ADAMS AND WALNUT STREETS PEORIA, ILLINOIS					
OPERATION	DRAWN	TRACED	CHECKED	APPROVED	SHEET
	P.H.S.	P.H.S.			
	HEWITT, EMERSON & GREGG ARCHITECTS				
	PEORIA, ILLINOIS				
					6



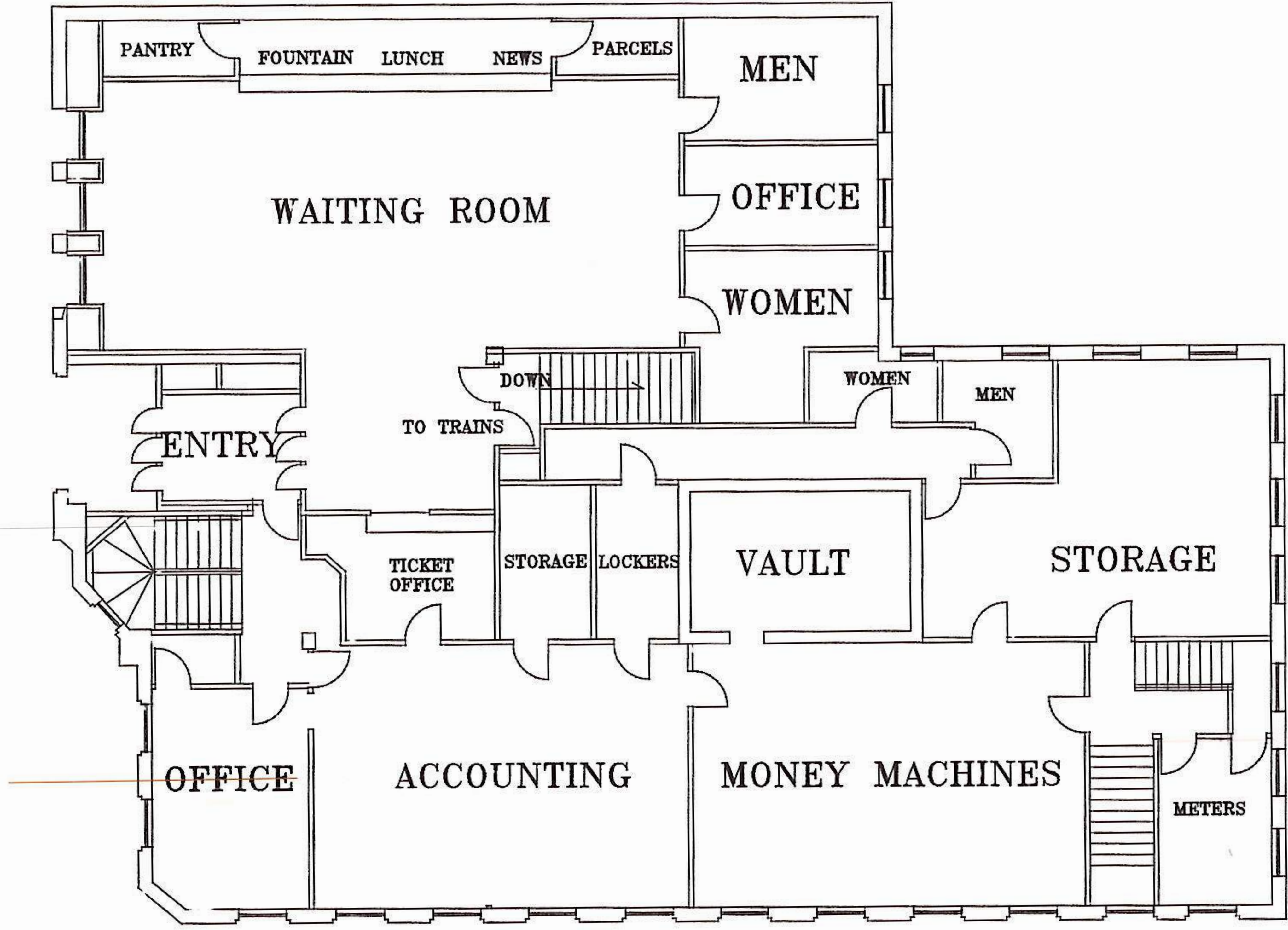
ADAMS ST ELEVATION



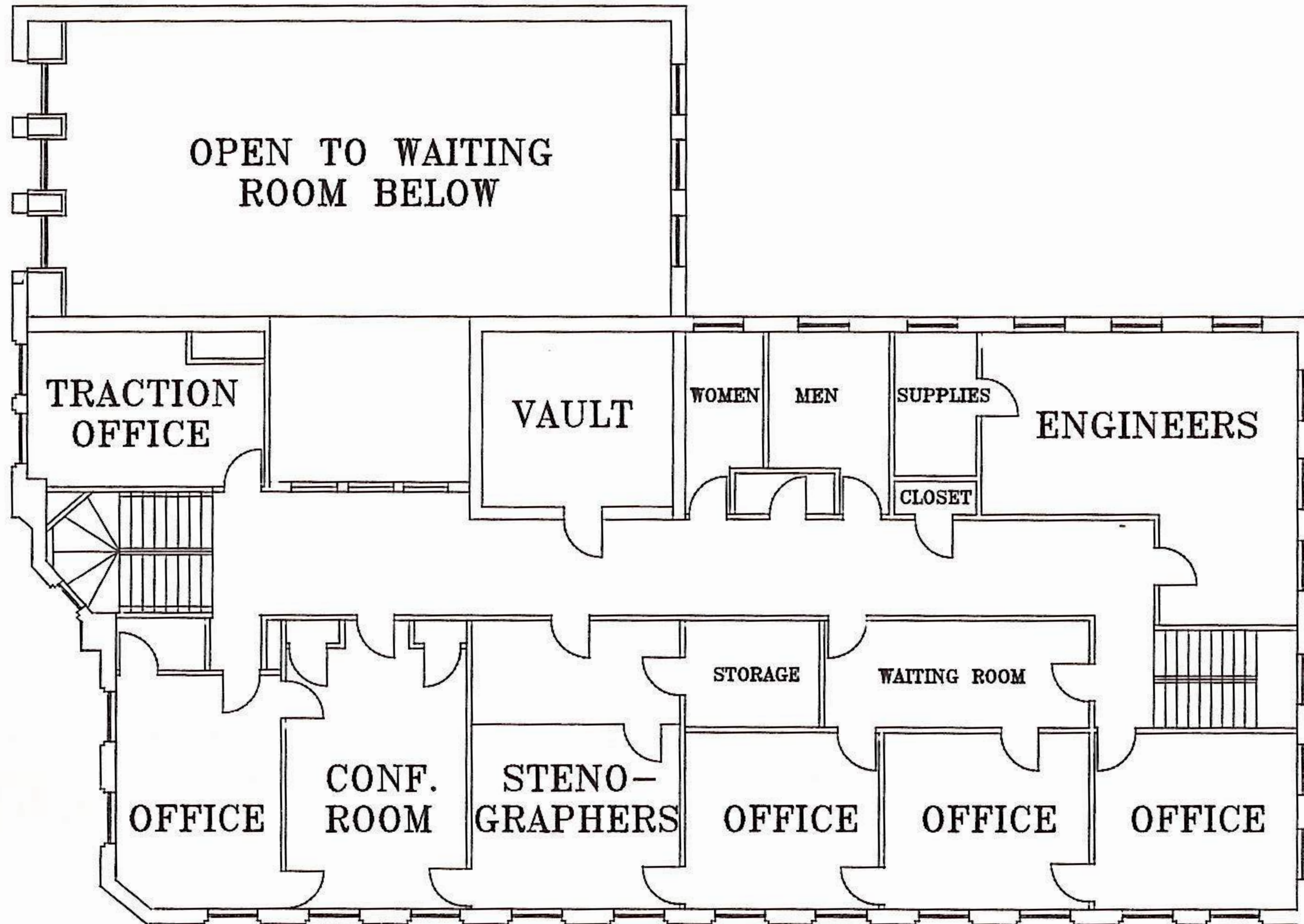
REAR ELEVATION



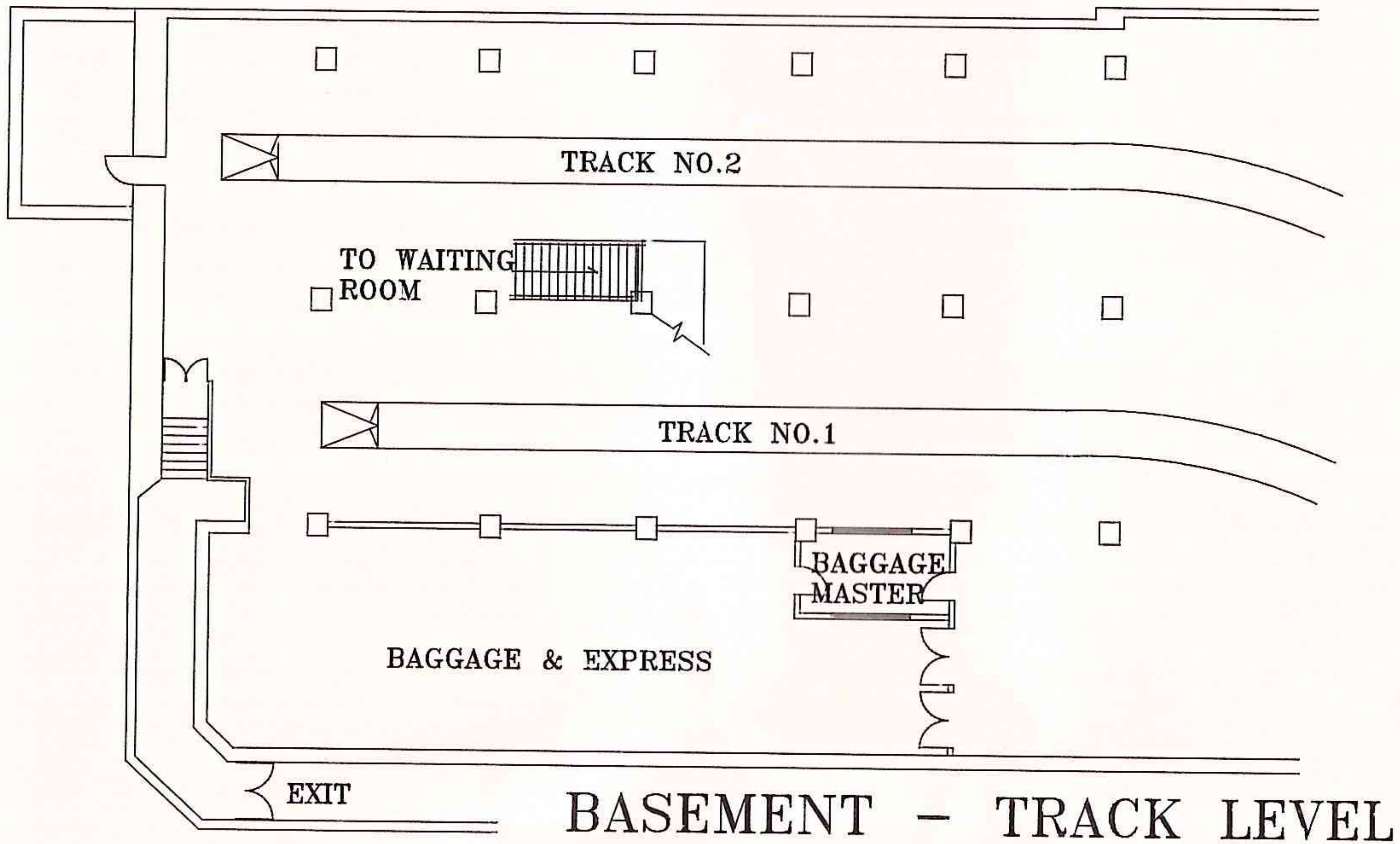
WALNUT ST. ELEVATION



FIRST FLOOR



SECOND FLOOR



BASEMENT - TRACK LEVEL