

## Substations - Table of Contents

<b><u>Page</u></b>	<b><u>Location</u></b>
2	Bement
3	Automatic Substation (Chambers St., St. Louis)
4	Danvers
5	Heyworth
7	Illioopolis
10	Standard-Front Elevation
11	Standard-End elevation
12	Standard-Roof
13	Standard-Side View
14	Standard-Floor Plan
15	Standard-Mackinaw Front
16	Oakley
17	St. Joseph
18	Automatic Substation
19	Union
24	White Heath

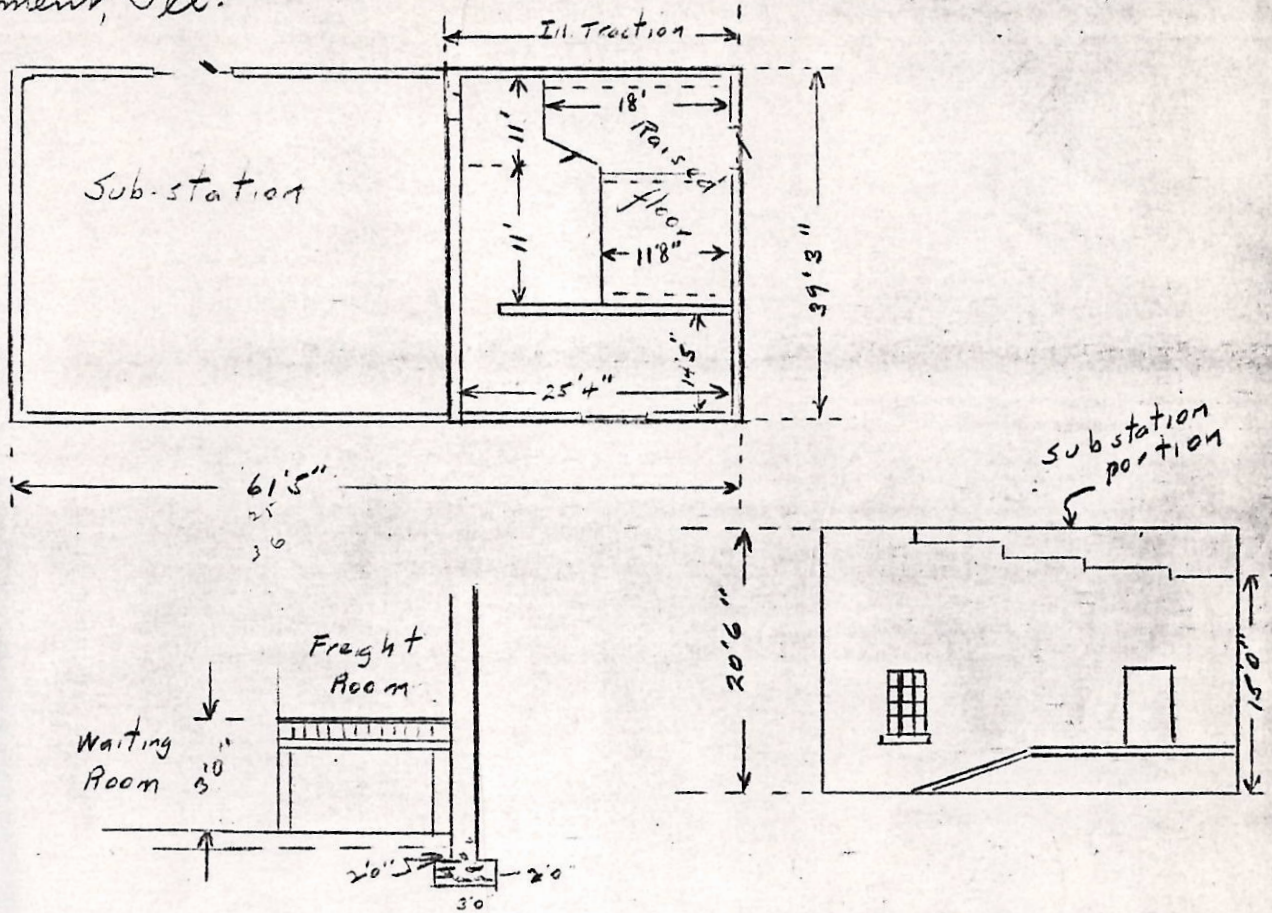
Date 12/13/00  
Carrier Illinois Traction Inc  
Valuation Section 1st Ill.

16

454

H. S. Yates  
J. Platt  
for Carrier  
for I. C. C.

Bement, Ill.



Passenger and substation owned by Illinois Power and Light Corp. Portion used exclusively by Illinois Traction Inc. shown above in red. Built 1907

Building of brick, all walls 13" exterior red face brick 4 spools. Interior unpainted - brick pt'd. 8" concrete floor 4" concrete roof lamp cover Wood sash. Roof supported by 6" beams station portion, 14" in substation. Ida brick

Similar in construction to White Heath.

180 lin. ft. Corr downspouts

Heating - stoves

Plumbing - one small lavatory

Lighting - Wreder conduit

4-3 clusters, 14-2 cluster and 11 single outlets

Clusters have 12" rebrotes

100 Watt lamps



Date 12/16/30

Carrier Illinois Traction Inc

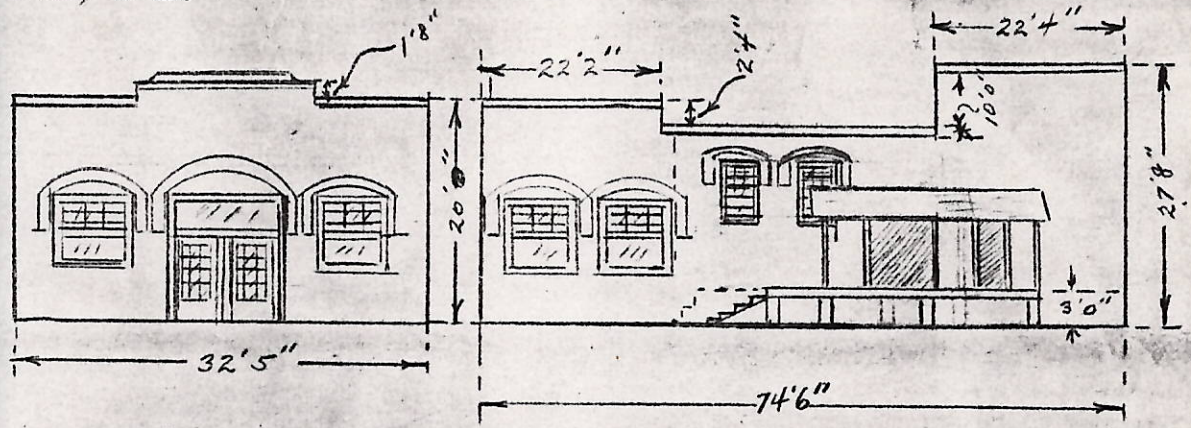
16

Valuation Section 1.5-T11

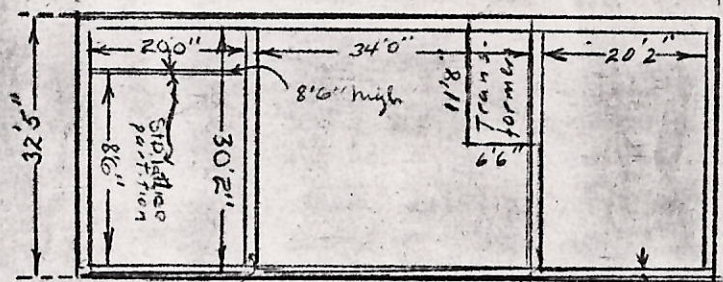
554

*L. J. Yates*  
*J. K. Smith*  
for Carrier  
for I. C. C.

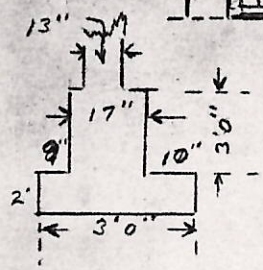
*Damers, Ill*



*Combination Passenger and Substation. Portion used by Illinois Traction Inc as shown outlined in red*



*Footings of brick*



*Concrete Platform on side as shown 28'2" X 7'0"  
7" concrete deck with 7" channel iron edging  
4-brick piers 1'X1'X4'0" + 2'X2'X1'0"  
Frame canopy - compo roof supported by 1 7/8" X 1 pipe*

*Building face brick 4 sides  
13" walls brick foundations, limestone sills, coping and trim. All sash-wood 1 7/8"*

*10" concrete floor, 4" concrete roof supported by 'I' beams, composition covered.  
All interior walls unfinished brick, floors + ceilings ptd.  
Heating - stoves  
Lighting - in conduit*

- |                     |                   |               |
|---------------------|-------------------|---------------|
| 1 - 4 light cluster | 15" El. reflector | 60 Watt lamps |
| 2 - 3               |                   |               |
| 2 - 2               |                   |               |
| 16 - single outlets | conduit drops     |               |

*Std coal house frame ptd 9'0" X 13'6" X  $\frac{10' + 7'0"}{2}$   
Board and batten bumps roof*

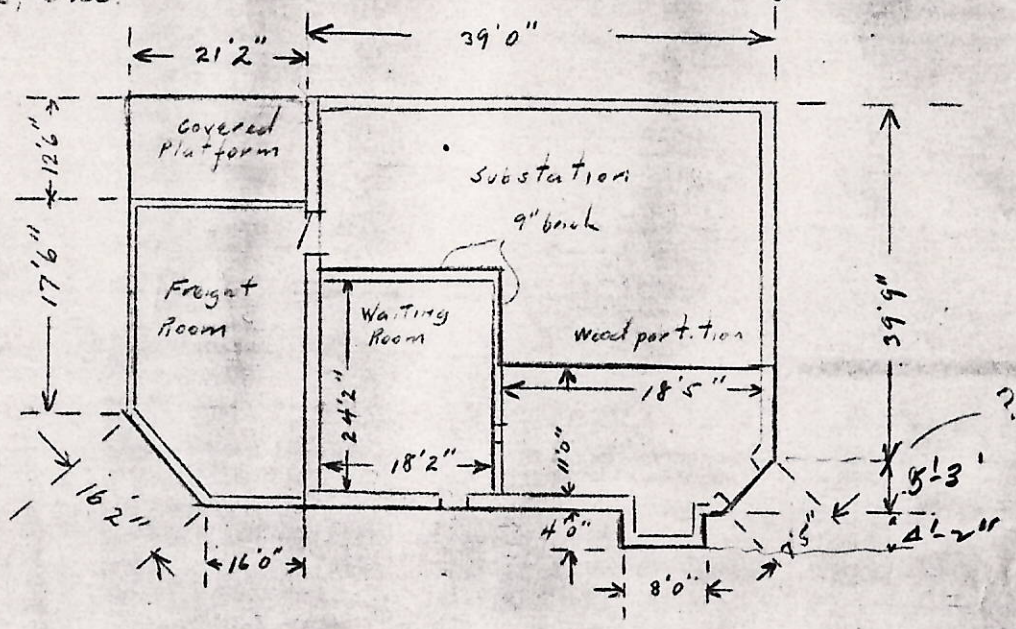
*Toilet - frame ptd. 8'2" X 4'2" X  $\frac{8'6" + 7'0"}{2}$   
Wood floor  
bump roof*

Date 12/17/30  
Carrier Illinois Traction Inc  
Valuation Section 15-111

16  
654

H. S. Gates for Carrier  
J. B. Smith for I. C. C.

Heyworth, Ill.



Height of brick building 22'8"  
 ✓ Freight addition  $\frac{17'4" + 15'8"}{2}$

Portion used by Illinois Traction Inc outlined in red.

Date June 18, 1929  
Carrier Illinois Tr. Co  
Valuation Section 15-111

A cct. 16

Byron File for Carrier  
W. W. Balderson for I. C. C.  
Fuzzy

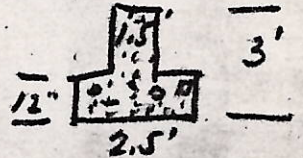
Heyworth, Ill. Sta. 1769+34

Comb. Pass. Sta. Frt. Hse. + Sub-Station, brick + frame  
as shown on Carriers Plans # 5-3-2, 3 sheets

80 Brick Portion, built 1911  
80 Frame " " 1925

Found. Brick Part, Exc. 3'x3'x178' Concr. Walls 178'

" Frame " High Plat. 12"x12" posts  
f' C to C. + 4 Concr.  
Piers 1'x2'x5' ea



Walls, Com. Brick, T.C. tile coping. Frame B+B. ptd.  
Roof, Tar + Gravel on 2"x12" - 16" C to C. for brick part  
Ready on 2x10 - 16" C to C. for frame part

Floor. Concrete on Cinder fill for Brick part, High Plat  
as shown for frame portion

Windows + Doors 1 3/4" as shown  
Interior. Brick Portion, plastered + ptd. Frame Portion, none

Plumbing - none

Heating - stoves

Lighting - 8 outlets, cond. 5 pipe drops 4 Lts. Eil. Shades 25  
2 cord " 1 "  
1 wall pkt. 1 "

Station signs, std. ea 3 "Heyworth"

Coal Box, Std. Type Tod House 9'x12'x 7+9/2 ready  
root.  
Fdn. Concr. wall 8"x4'x20' + 150 fbm

2 Dug Wells 3' Ø inside 9" brick walls 35' Deep  
with 2-6" Concr. tops 9'x9' + 2 pitcher pumps

Concrete Platforms around sta. 1016 SF. 6"th

2 Lengths 36" Vit. Pipe for flower beds

100 SF Shrubbery + Flowers  
500 " grass area

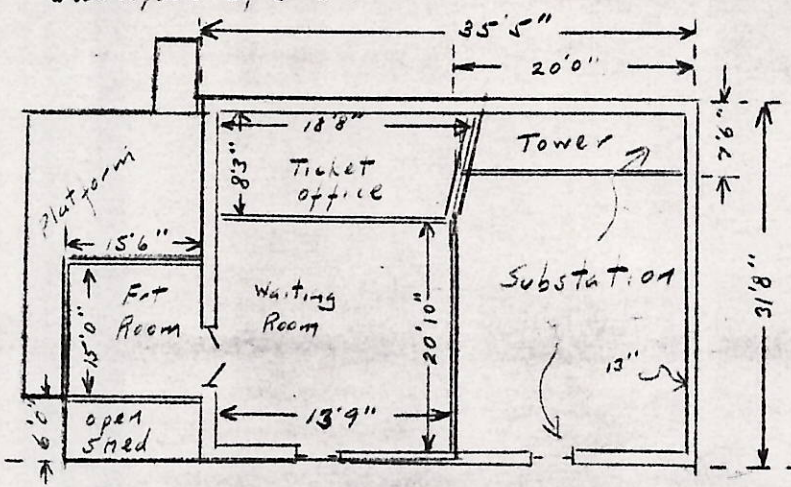
Date 12-15-30  
Carrier Illinois Traction Inc  
Valuation Section 14-111

16

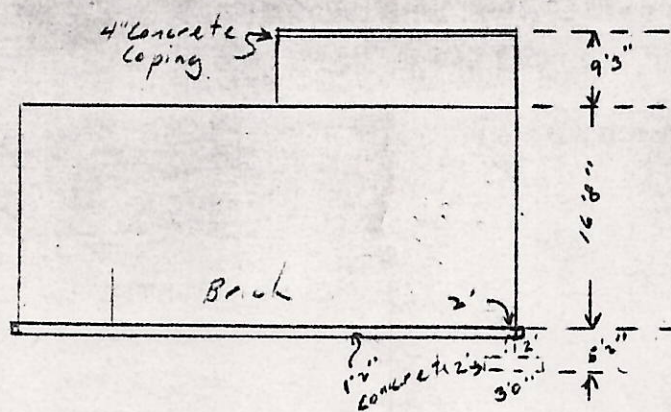
G.S.Y

*M. S. Gates* for Carrier  
*J. B. Smith* for I. C. C.

Illiopehria, Ill.



Height main building above ground line 17' 10"



Combination Passenger + substation owned by Illinois Power & Light Corp portion used exclusively by Illinois Traction Co as shown outlined in red.

Building of brick, face brick four sides, 13" walls concrete foundations 8" concrete floor, 4" concrete roof supported by 14" I beams similar in type to White Heath. Roofing - tar - gravel  
Limestone sills, wofd wash throughout  
All partitions are frame, 2x4 framing with 7/8" sheathing DM + 3 wofd both sides  
Interior brick walls ptd.

Sub. room addition - frame 15'0" x 15'6" x  $\frac{13'+16'}{2}$  on 8 conc. piers as shown on detail - next sheet

all heating - stoves

Lighting - Wiring in conduit  
2-3 cluster 14" reflectors 60 Watt globes  
1- +  
7-single conduit outlets

Date 12/15/00

Carrier Illinois Traction Inc

16

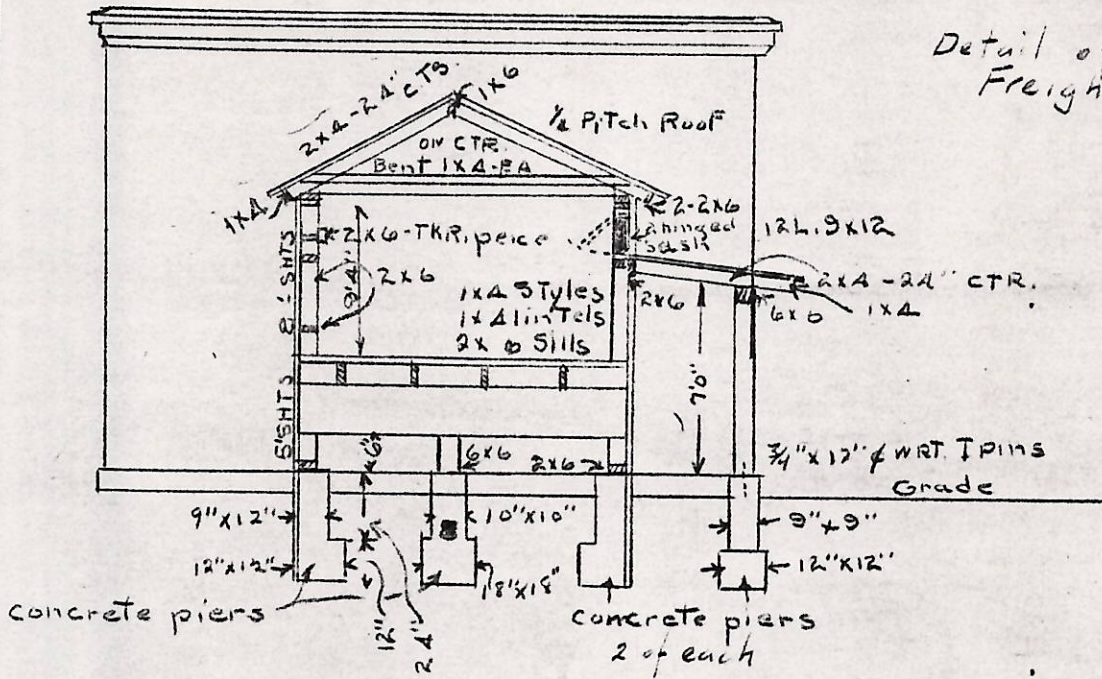
Valuation Section 4-T11

G. L. Yates for Carrier  
J. H. Phillips for I. C. C.

Illinois, Ill

654

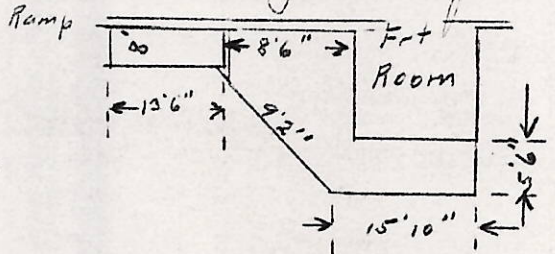
Detail of Freight Room



concrete piers

concrete piers  
2 of each

Freight platform



2" deck on 2" x 10" 16'2" c  
on 6" x 10" caps } supported  
on 8" x 8" x 5'0" posts }  
1" skirting 3 sides pt d

concrete walks and platforms

- 52' x 8'4"
- 16'6" x 6'0"
- 26' x 12'
- 30' x 6'0"

Date 5-29-1929  
Carrier F. T. Co.  
Valuation Section 4-Int.

Byron File for Carrier  
V. W. Balderson for I. C. C.  
F. T. C.

Acct. 16

Illiopolis Ill.

Built 1904 Cond. Normal

Frame Freight House Type IV  
15.5' x 15.5' x  $\frac{13'+16'}{2}$

Prepared Roof

Found - 50' of 6' x 8'

Superstr. Drop siding painted outside

Platform - High Wood - 5.5' x 15.5' + 8.5' x 20'  
Inclined 8' x 16'

2" deck on 2" x 8" @ 16" cto c.

90' of 6" x 8" caps

17 Posts 2" x 8" x 3'

17. Mud Sills 3" x 10" x 1'

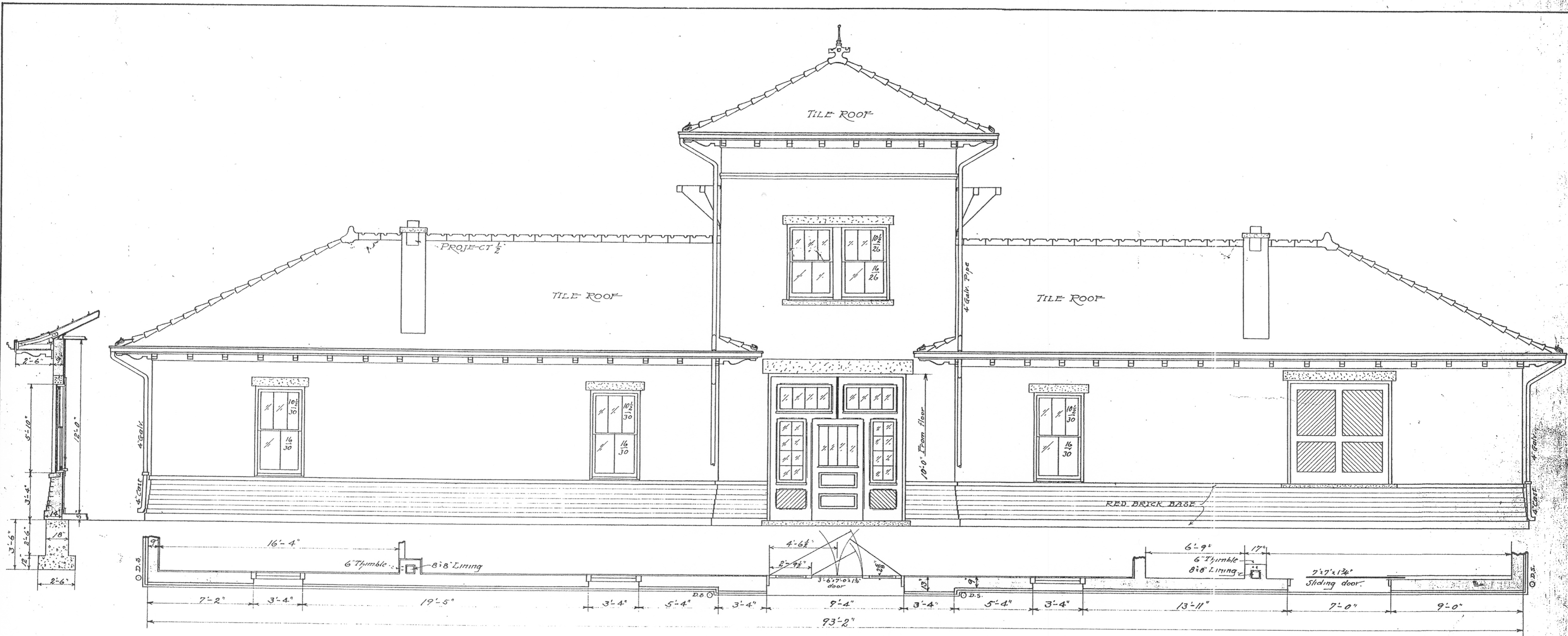
Shirting 2" planks 3.5' x 32' painted

Electric lights - Conduit 2' outlets

Shelter - 7' x 16.5'

Roof prepared on 7/8" sheath. on 2" x 4" @ 26" cto c.  
on 2" x 4" plate on 3 posts 4" x 4" x 7'  
2 cona pier 12" x 16" x 12" all painted

Conc. paving - 4" - 9' x 15.5' + 6' x 60' + 12' x 24'



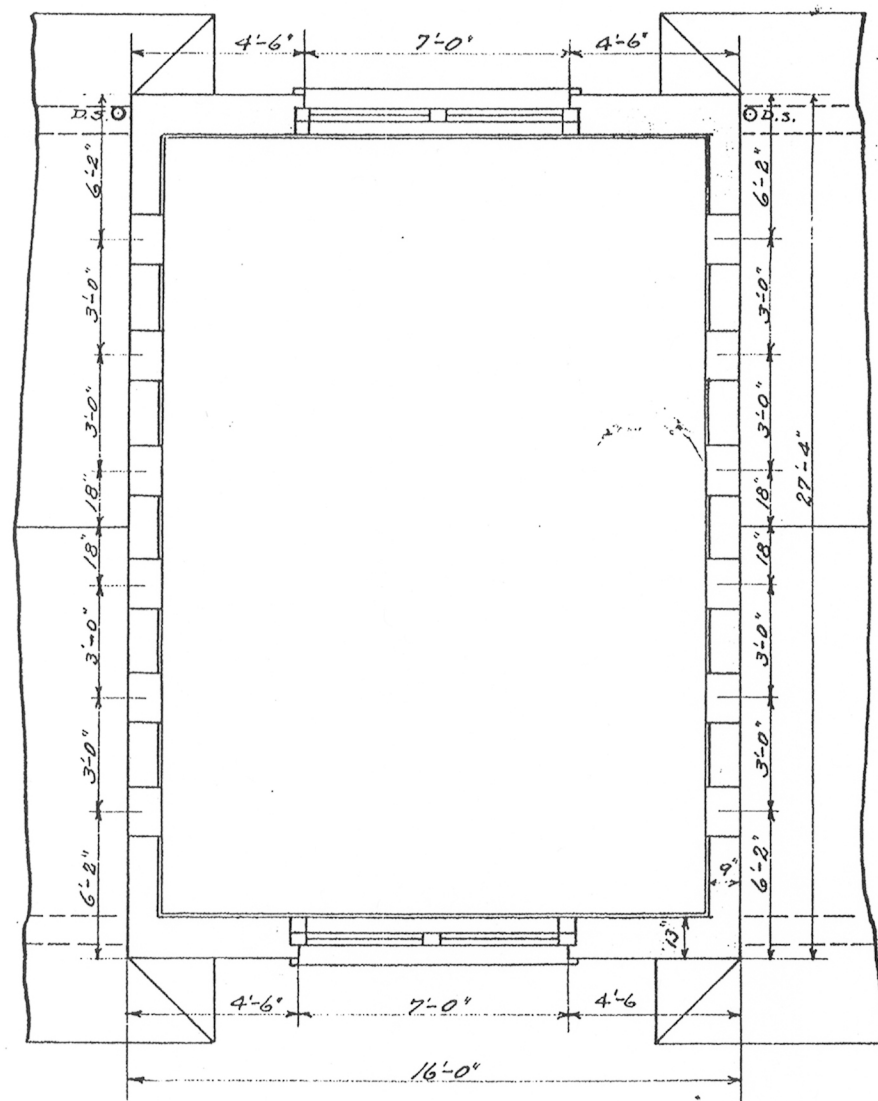
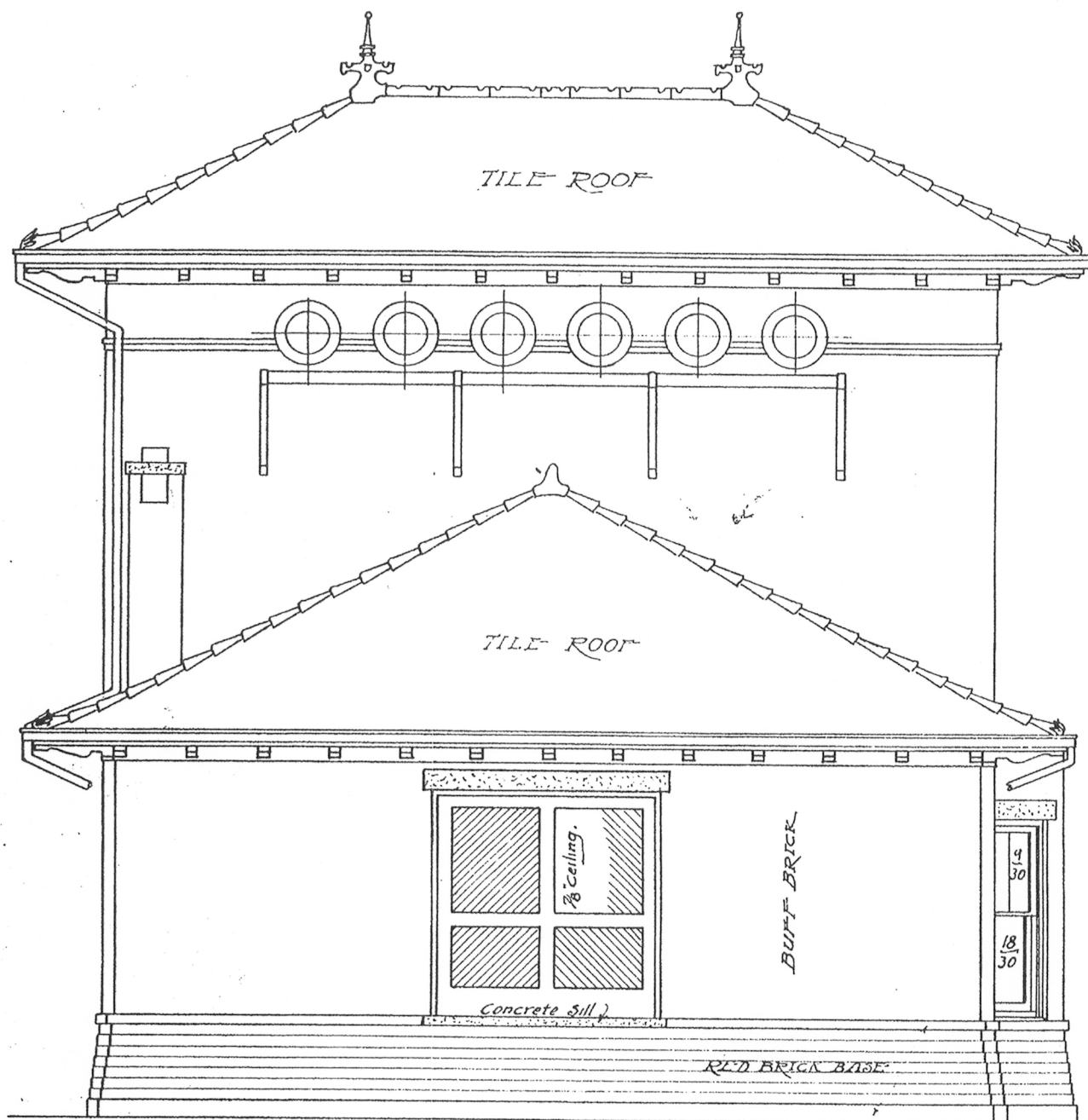
REAR ELEVATION  
SCALE:  $\frac{1}{4}'' = 1'-0''$

ILLINOIS  
TRACTION COMPANY

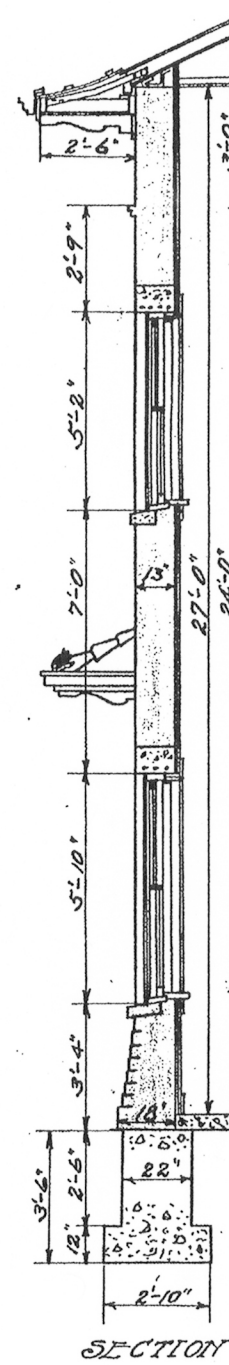
STANDARD SUB STATION No. 1

Approved: *A. E. Cumbick*  
General Manager

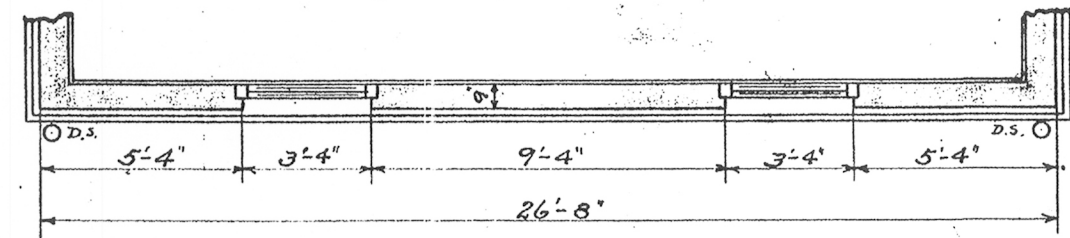
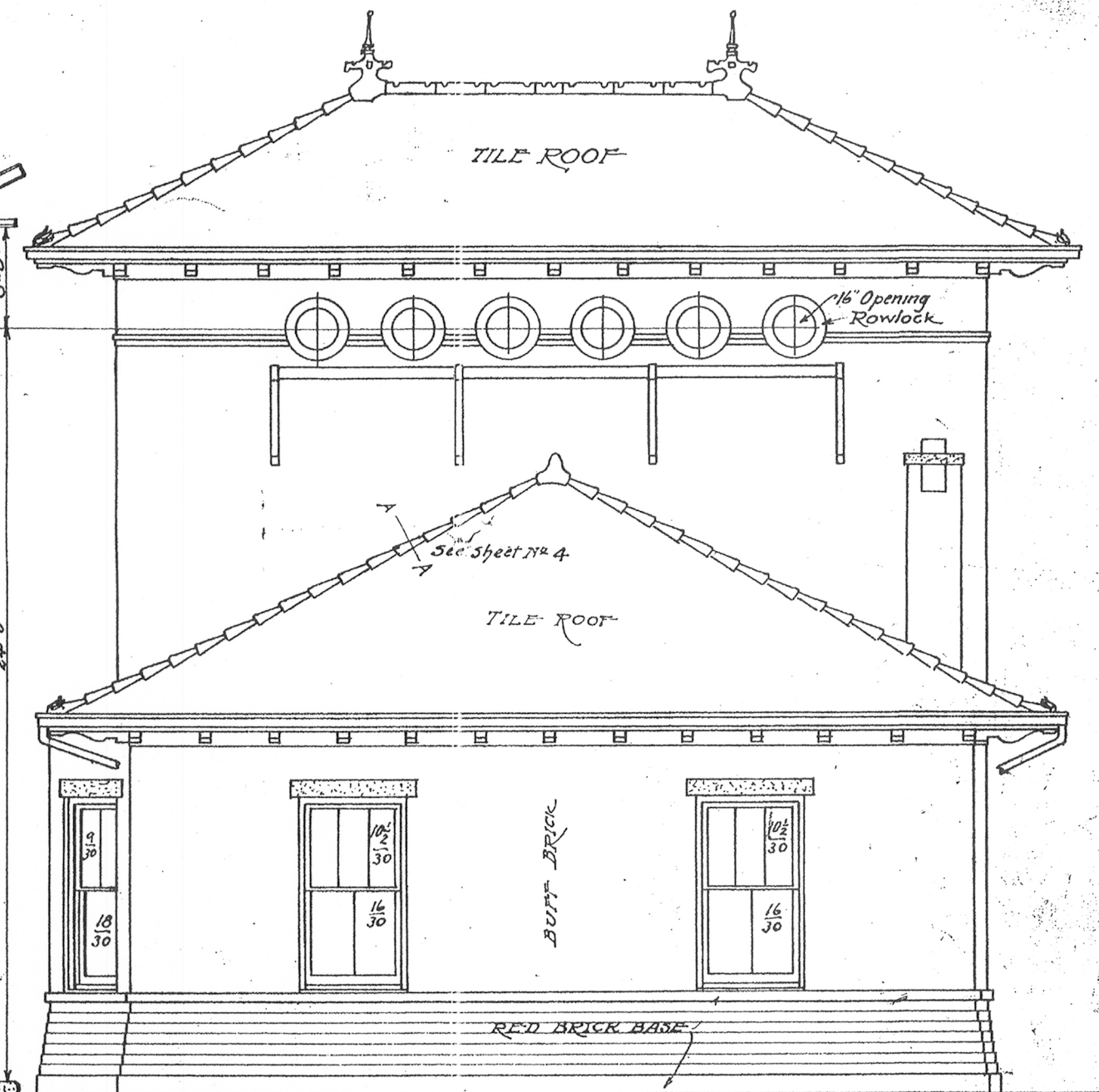
Office B. and B. Dept.  
Decatur, Illinois  
3-20-1909



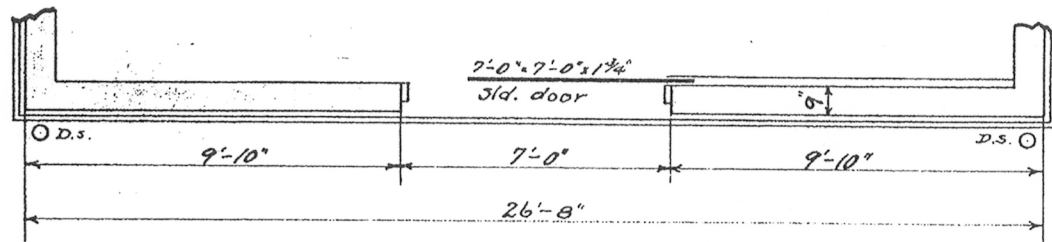
PLAN OF TOWER  
SCALE: 1/4" = 1'-0"



SECTION



END ELEVATION  
SCALE: 1/4" = 1'-0"



END ELEVATION  
SCALE: 1/4" = 1'-0"

ILLINOIS  
TRACTION COMPANY

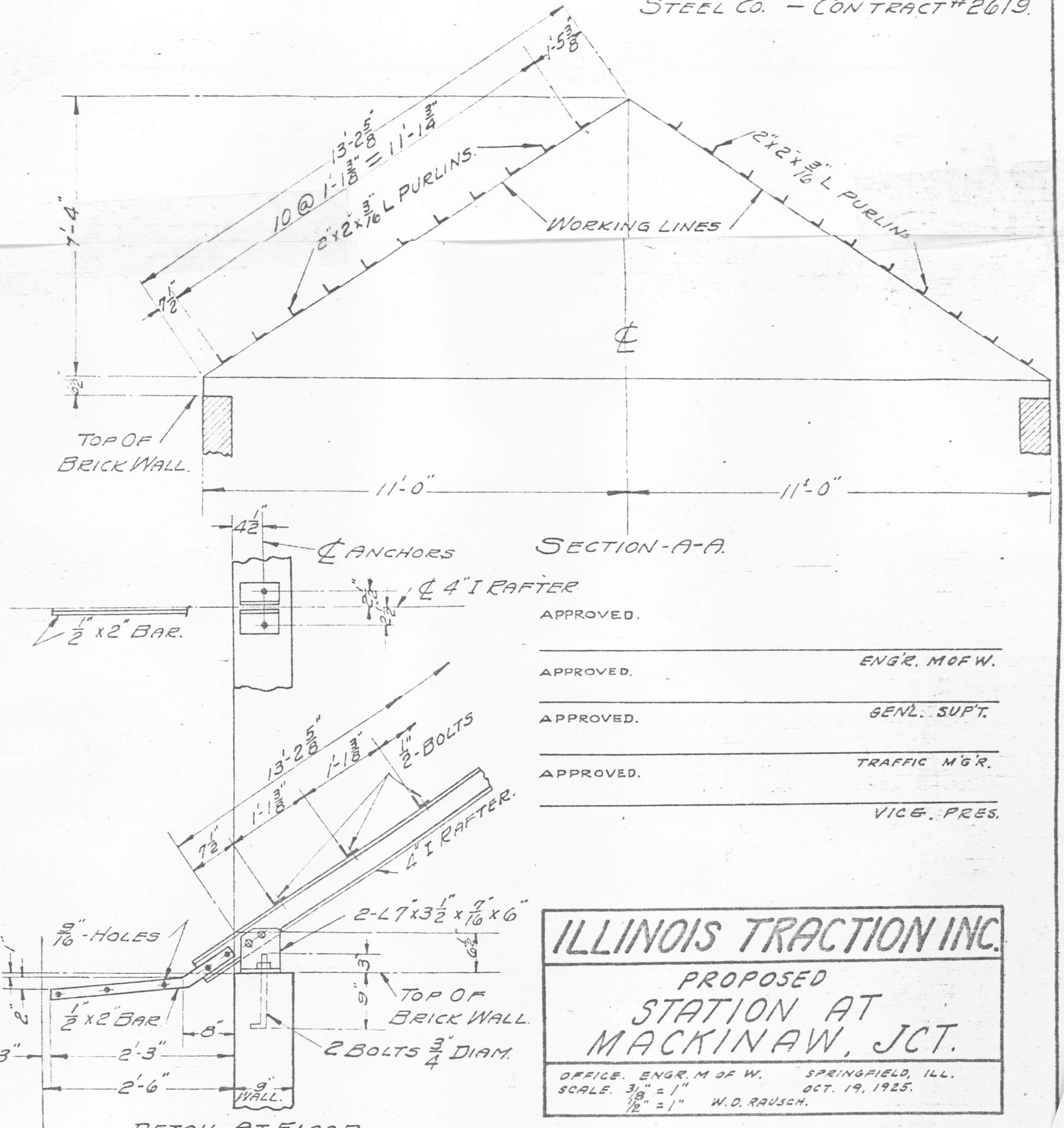
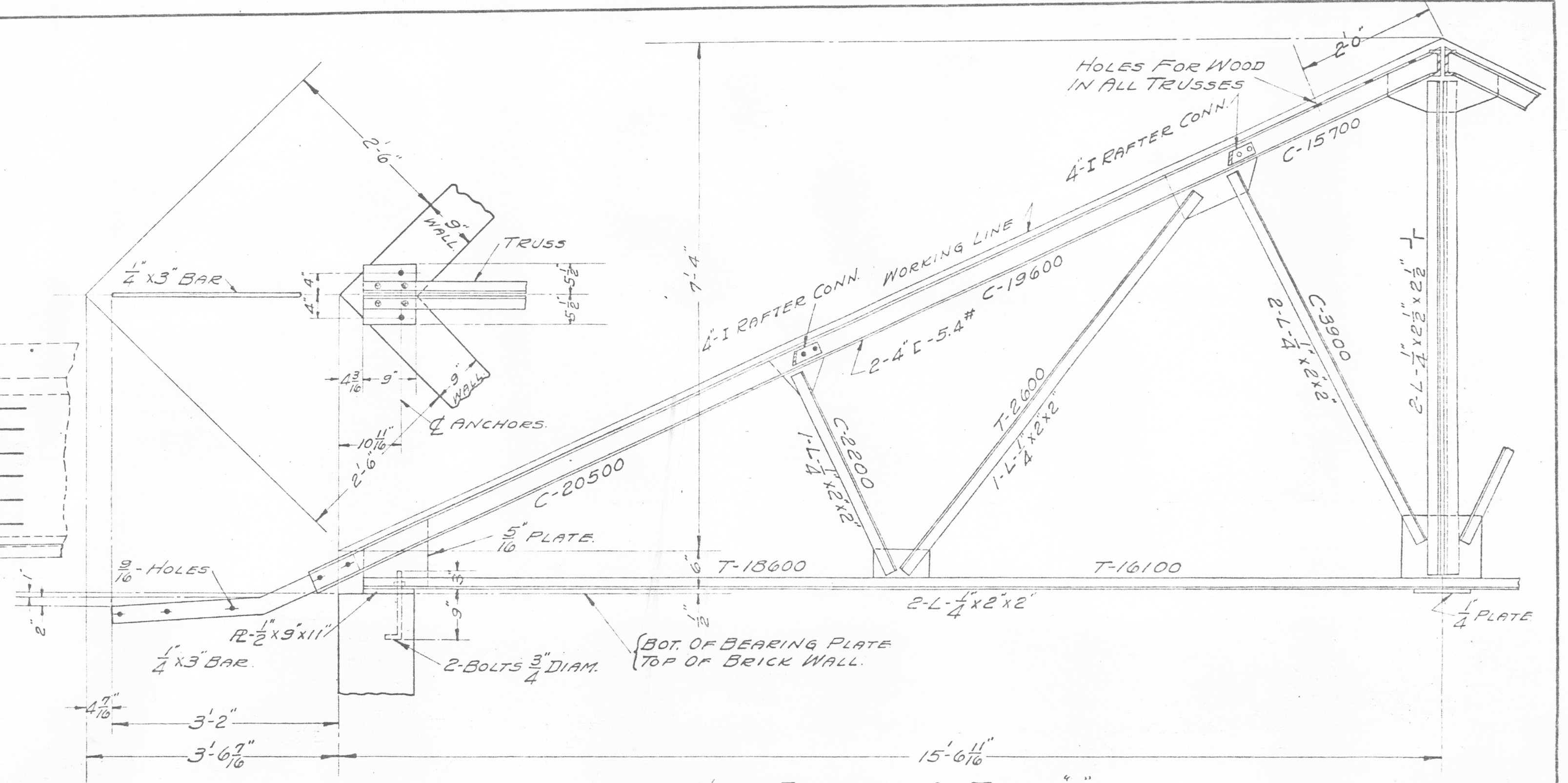
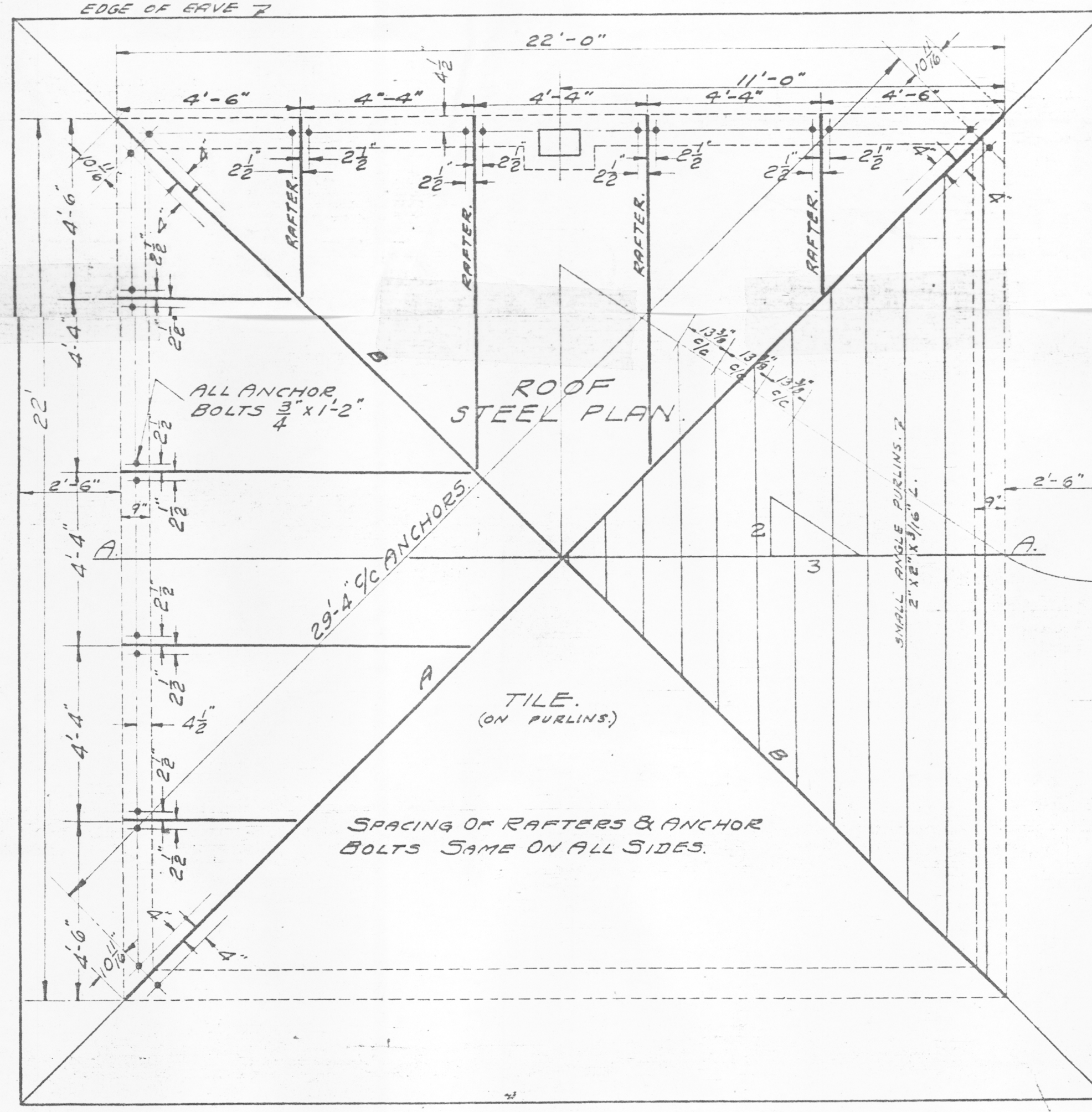
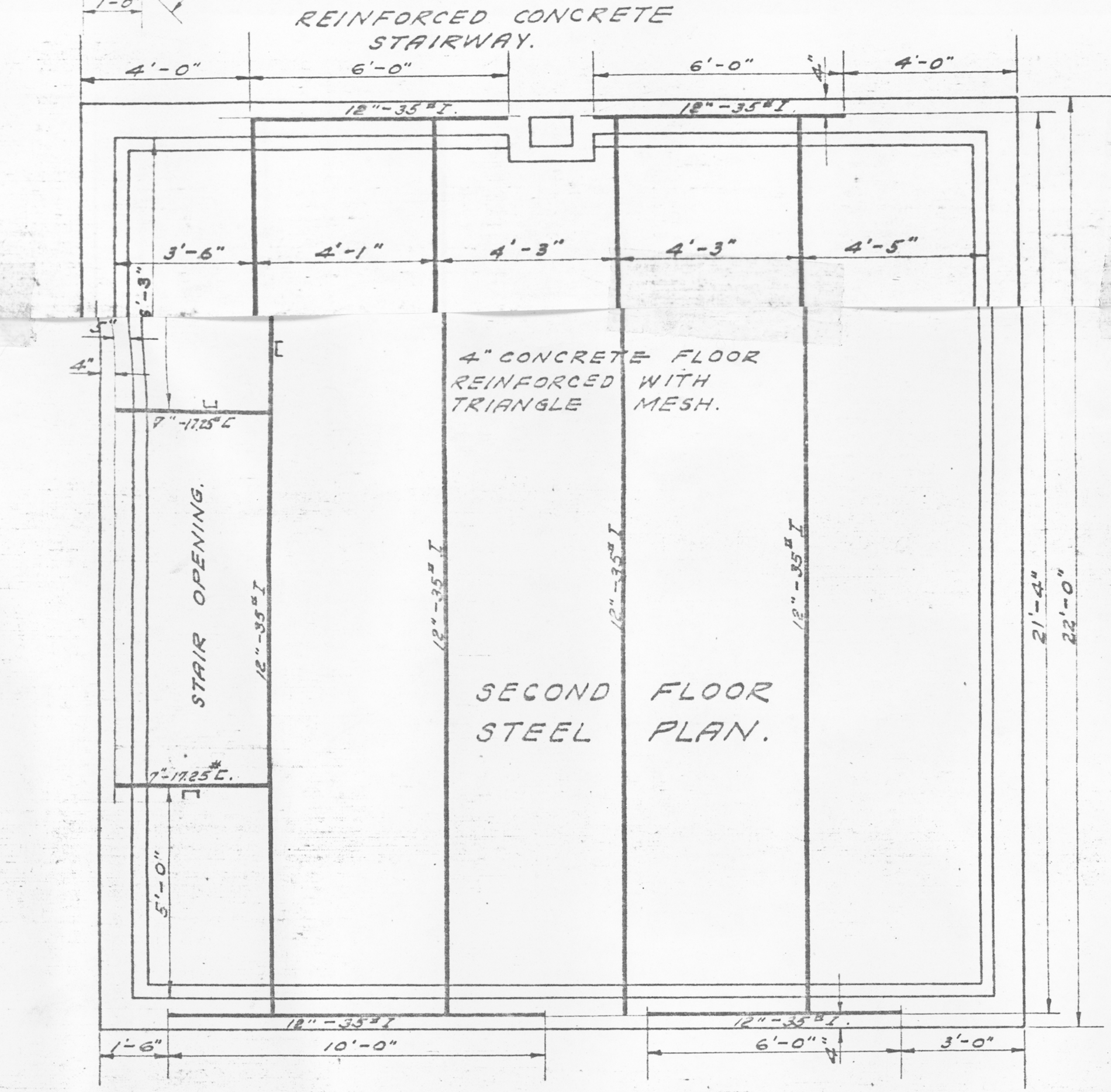
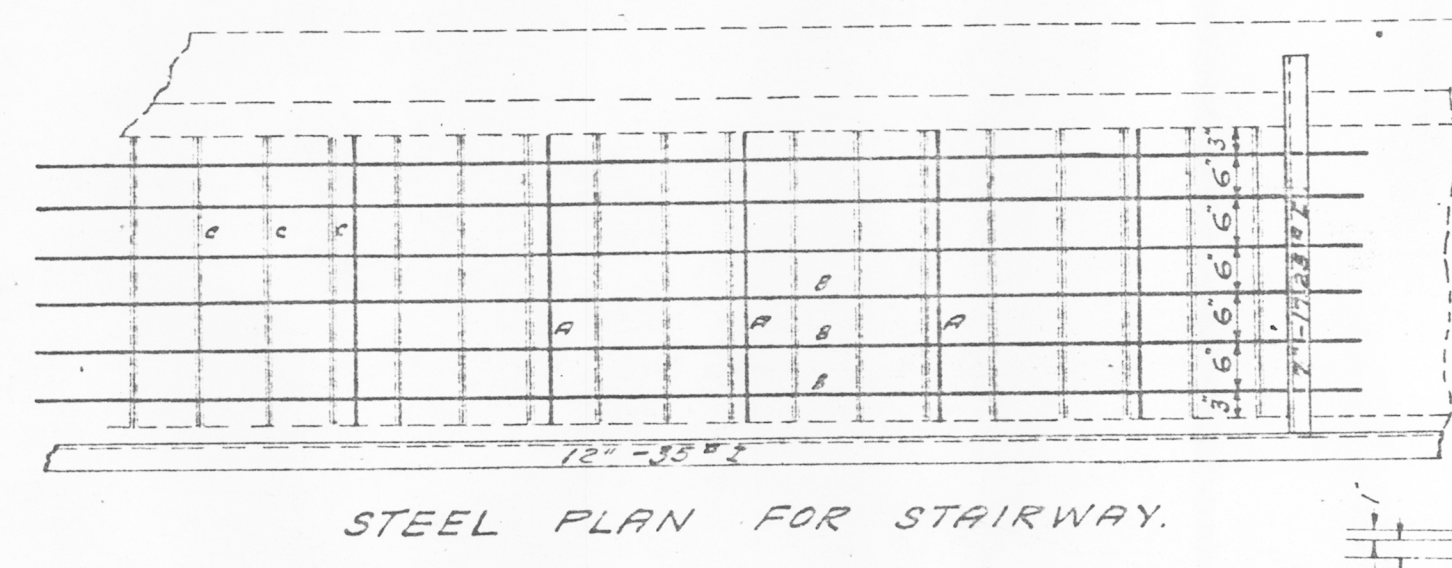
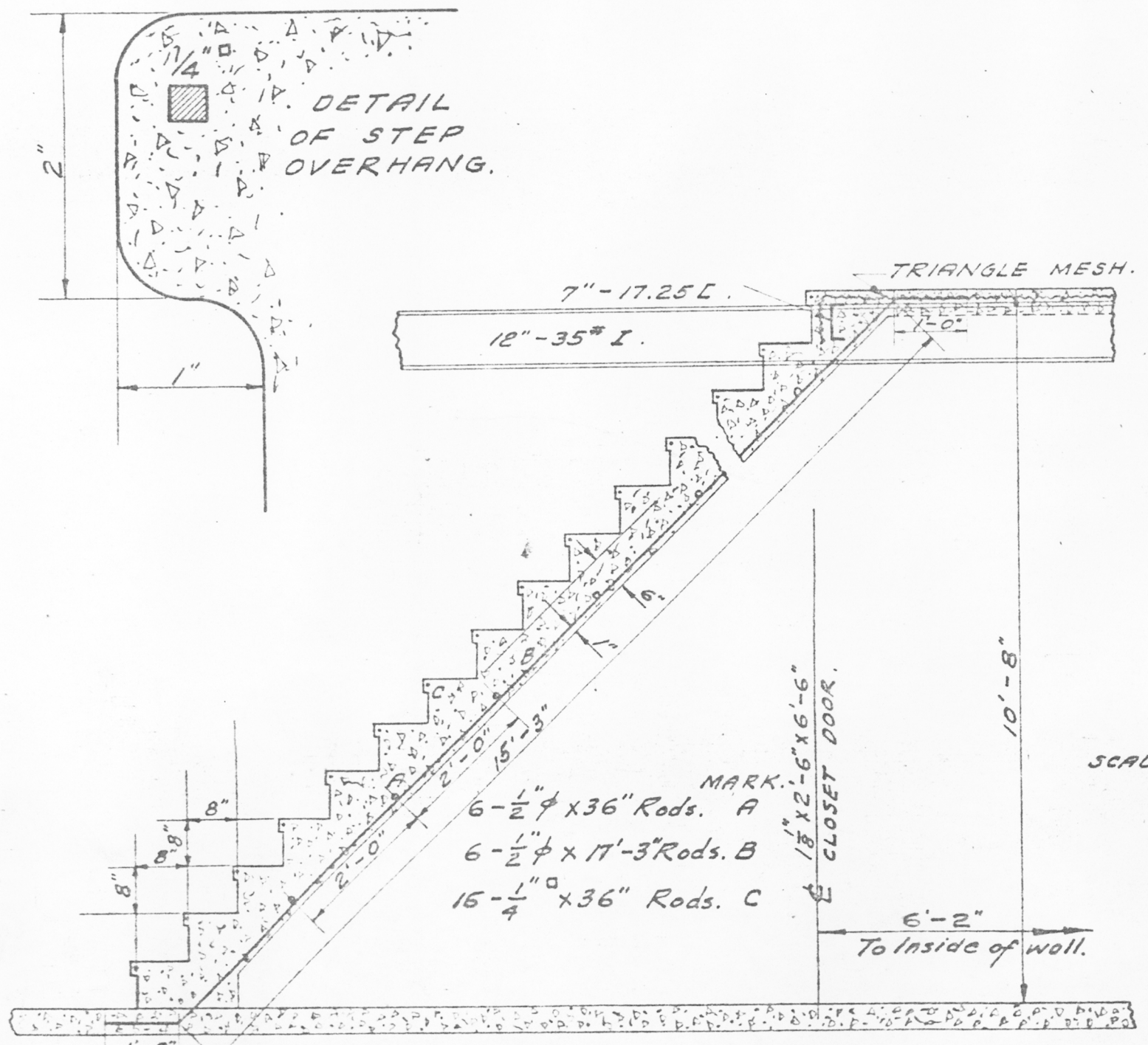
STANDARD SUB STATION No 1

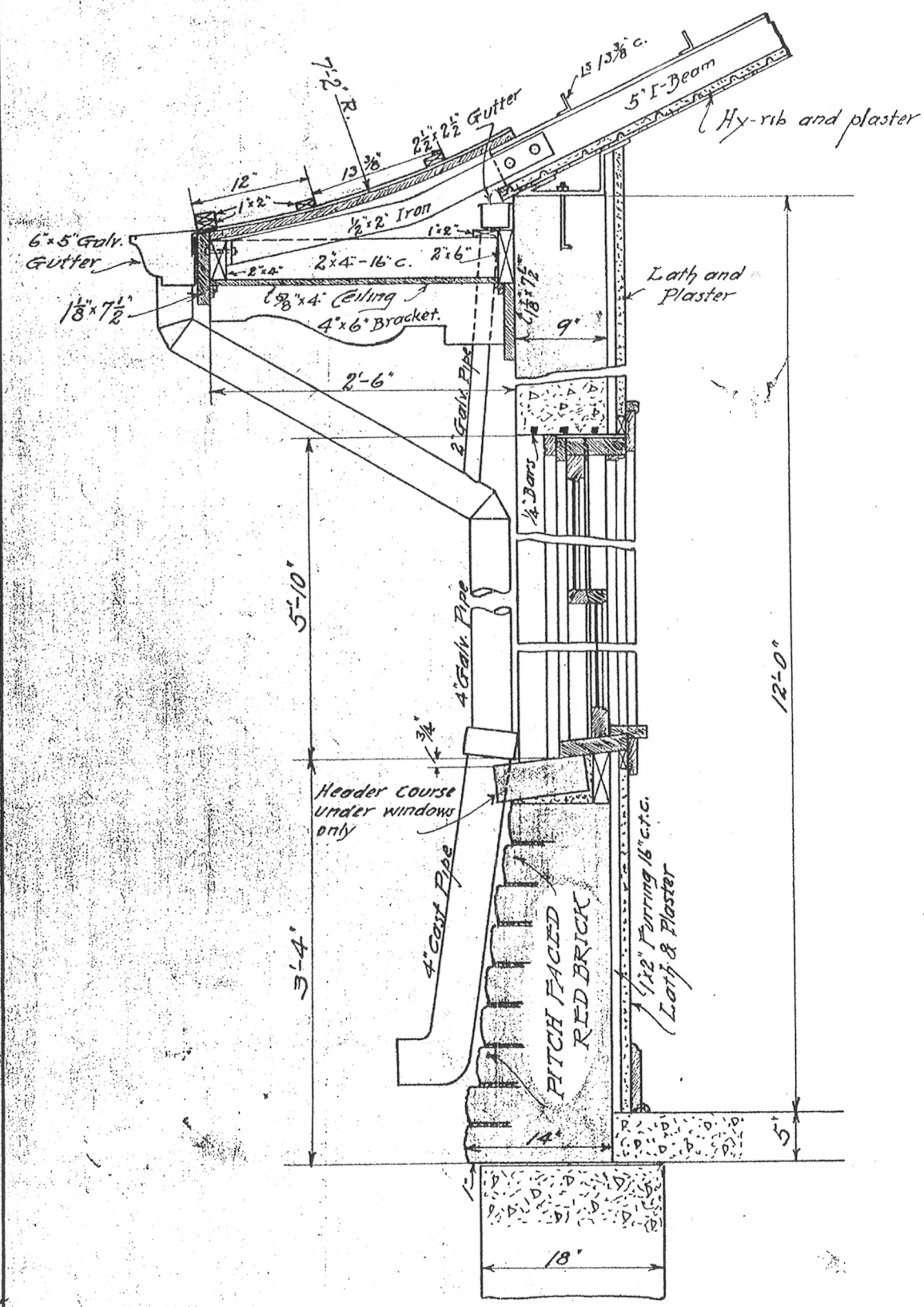
Approved: *H.E. Chubbuck*  
General Manager

Office B. and B. Dept.  
Decatur, Illinois

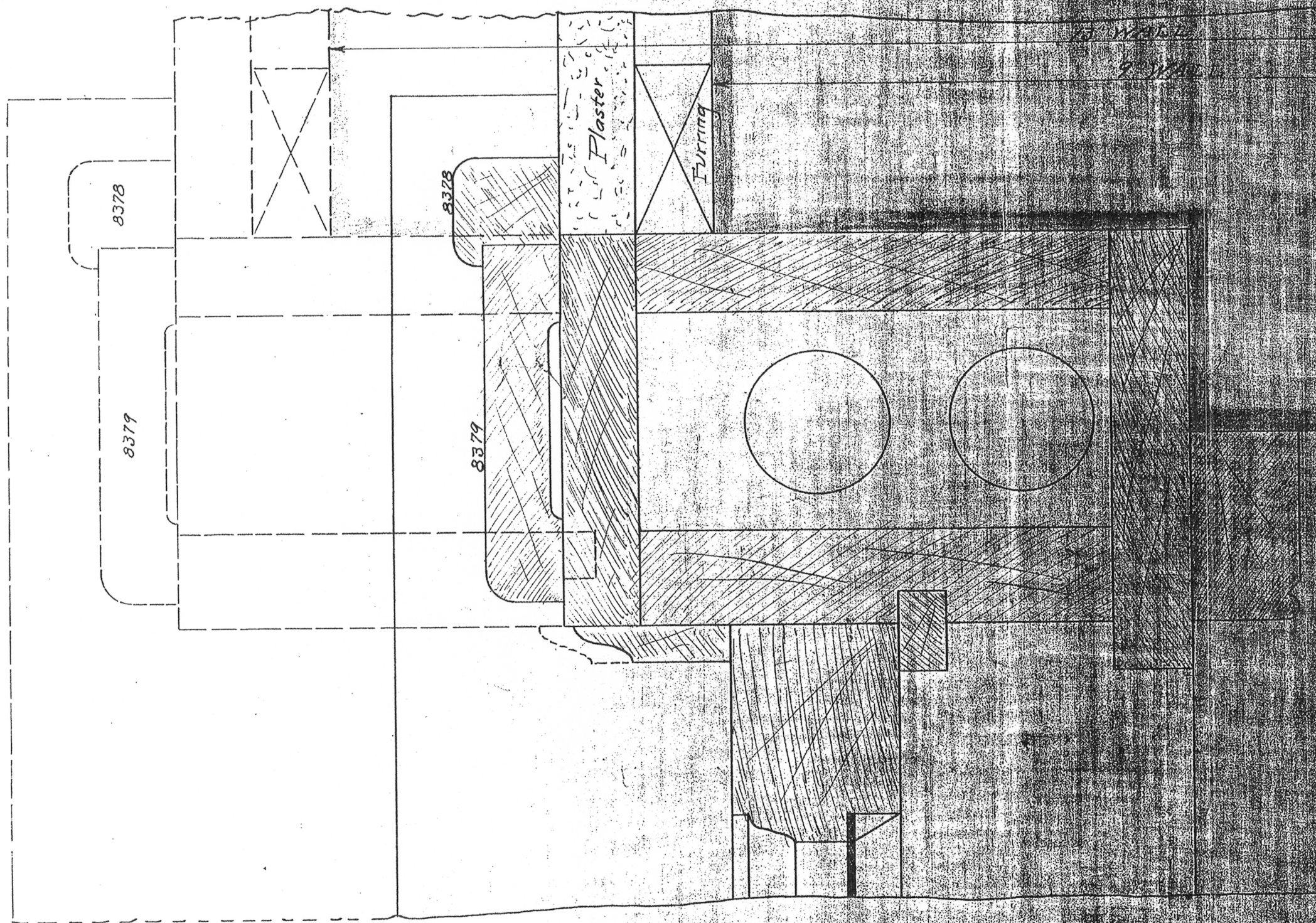
3-20-1909

SHEET  
No 5



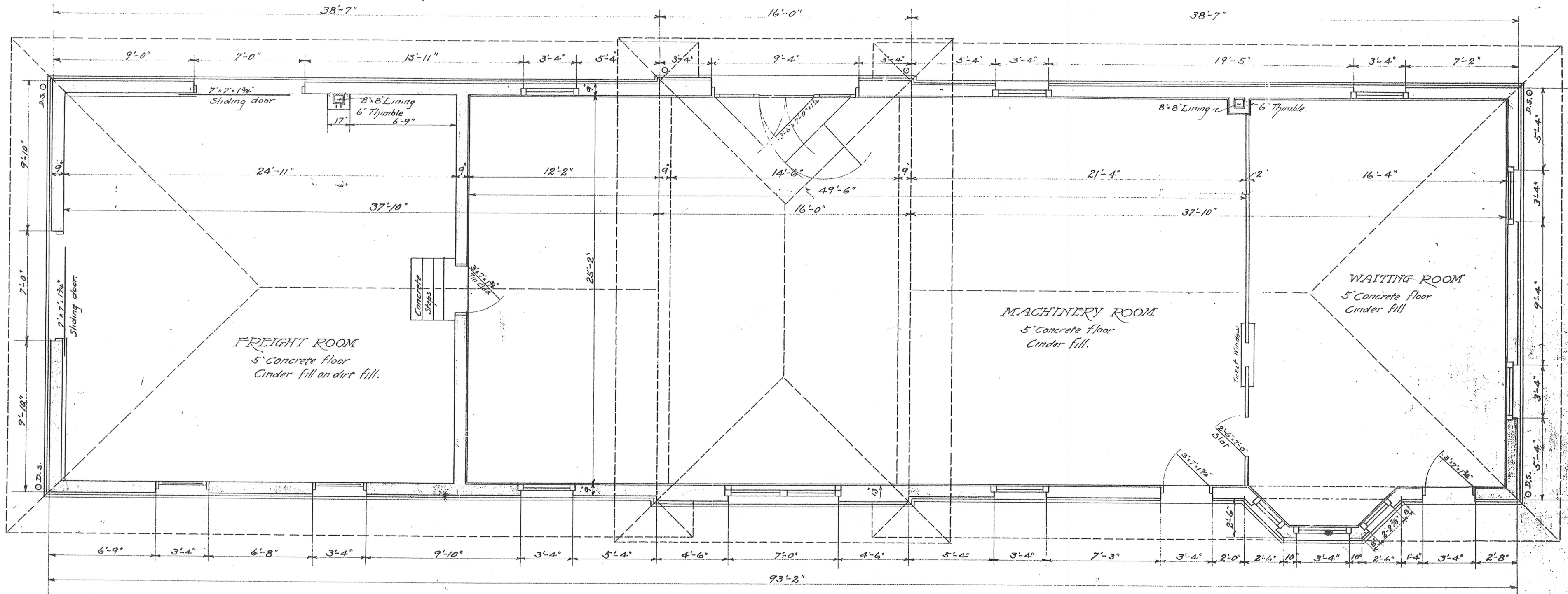


DETAILS  
SECTION OF WALL  
SCALE: 1"=1'-0"



DETAILS  
SECTION OF WINDOW FRAME  
FULL SIZE

Approved: \_\_\_\_\_  
 Date: \_\_\_\_\_



FLOOR PLAN  
SCALE: 1/4" = 1'-0"

ILLINOIS TRACTION COMPANY	
STANDARD SUB STATION No. 1	
Approved: <i>H. E. Chebluk</i> General Manager	
Office B. and B. Dept. Decatur, Ill.	3-20-1907 No. 2

1-8-5



Date 12/15/20

BUREAU OF VALUATION

Carrier Illinois Traction Inc

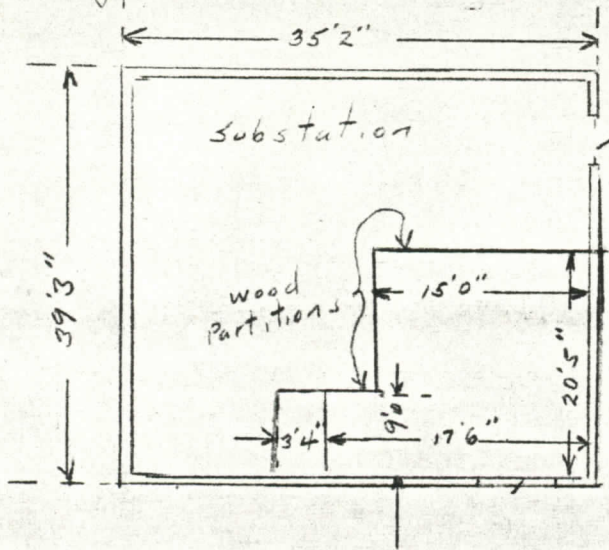
16

654

L. S. Gates for Carrier  
H. H. [unclear] for I. C. C.

Valuation Section 14-T11

Oakley, Ill.



Height 19'6"

Substation + Passenger station owned by Illinois Power & Light Corp.  
 Portion used by Illinois Traction Inc. as shown outlined in red.  
 Building identical to station at White Heath

Heating - stoves

Lighting

Wired in conduit

2 - 6 light clusters, 15" reflectors (substation)

1 - 3 " " " (waiting room)

2 - desk lights All 100 watt bulbs.

Concrete platform 50' x 6' x 15"

St'd coal shed 9' x 12' x  $\frac{8'2" \times 11'10"}{2}$   
 Board and batten pt d  
 Compso roof

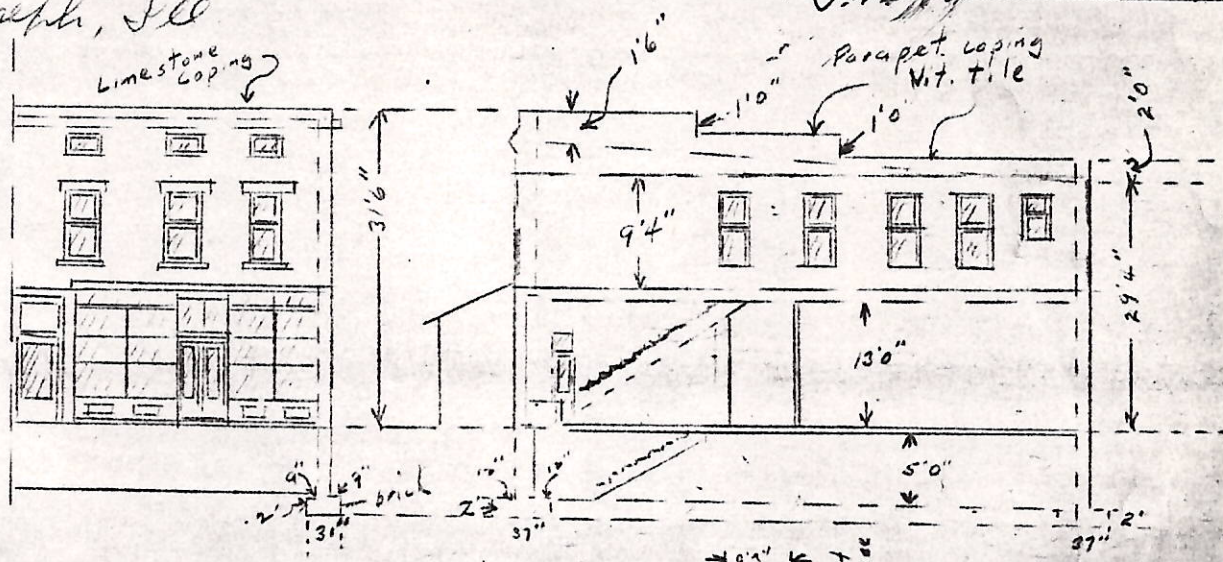
Toilet - frame  
 3'10" x 6'10" x 7'0" pt d  
 wood floor  
 Compso roof

Date 12/10/20  
Carrier Ill Traction Inc  
Valuation Section 14-T11

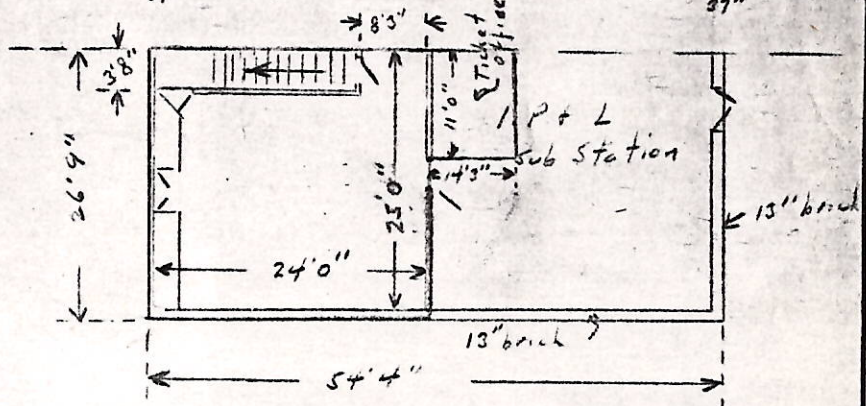
16  
654

G. S. Gates for Carrier  
J. S. [Signature] for I. C. C.

St. Joseph, Ill



Coal passenger station  
+ substation owned by  
Ill. Power + Light Corp.  
Portion used exclusively  
for railroad purposes  
Built 1895



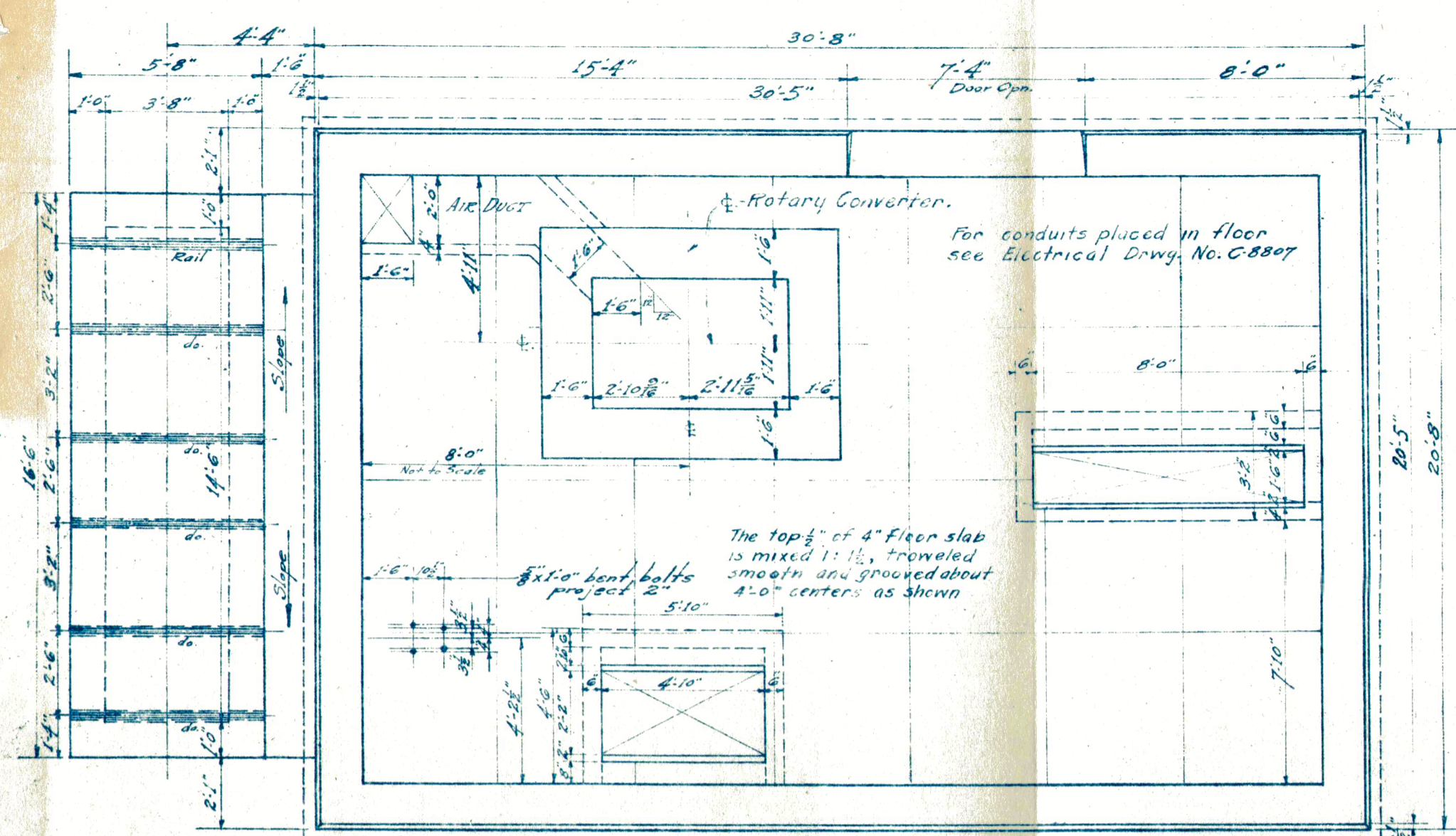
13" brick walls 1 side  
and two ends, brick  
footings as shown  
Limestone sills and lintels  
Tar roof. Chimney 17" x 21" x 9'8"

Portion used exclusively  
in solid red. Used jointly  
in broken red outline

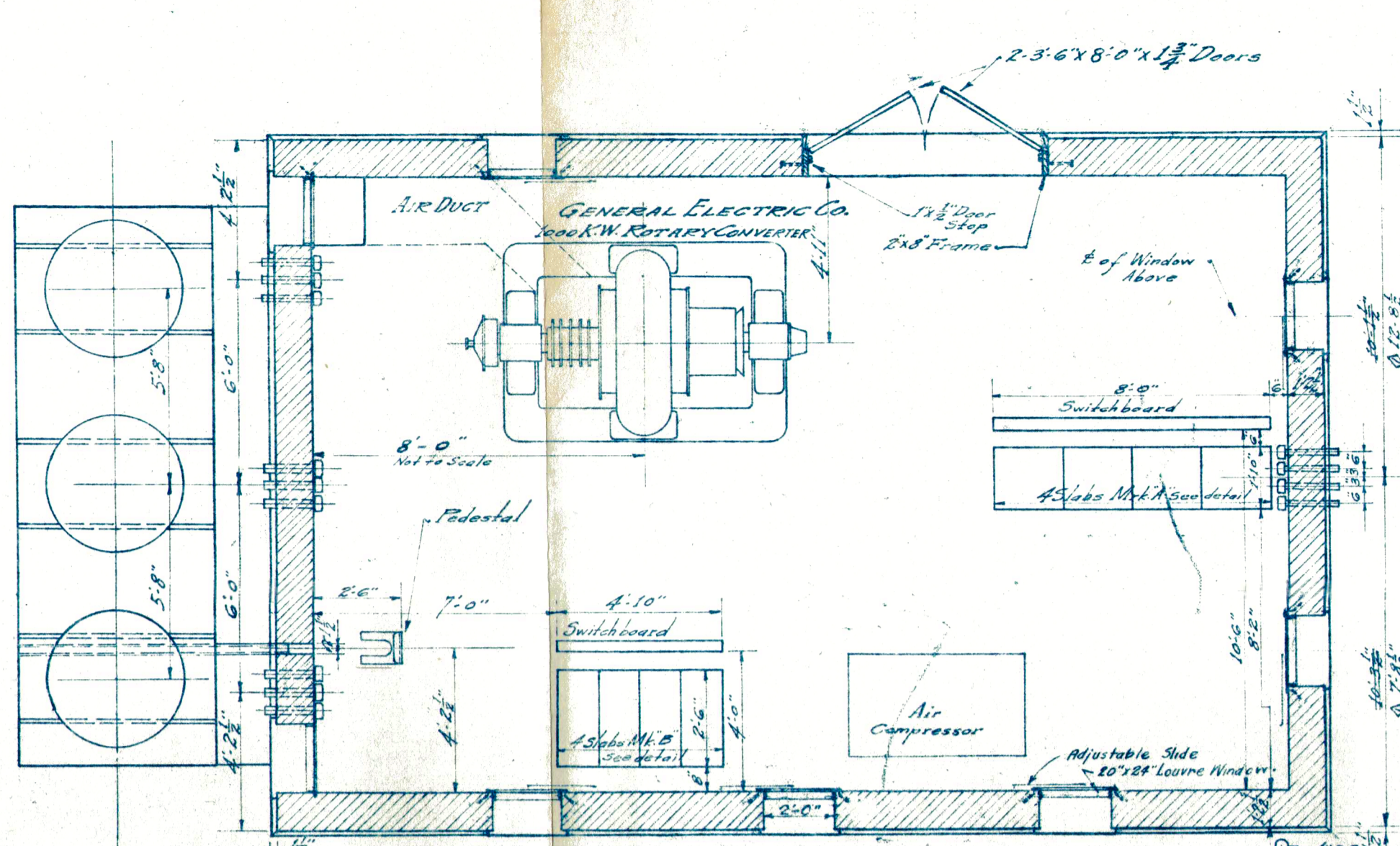
Basement used for storage of coal and for boiler  
6" concrete floor. Stairway wood oper.  
Interior unfinished

First Floor used as shown  
1" Y.P. flooring with 7/8" maple finish  
on 2" x 13" 12" C-C  
Partitions frame. D.M. + B. ptd. Between waiting room  
and substation portion 30% w/ sash with Florentine glass  
Waiting room walls plastered with wood wainscoting  
D.M. + B. ptd 3'9" above floor  
Substation unfinished brick walls  
All of ceiling finished with 7/8" D.M. + B. wood ptd.

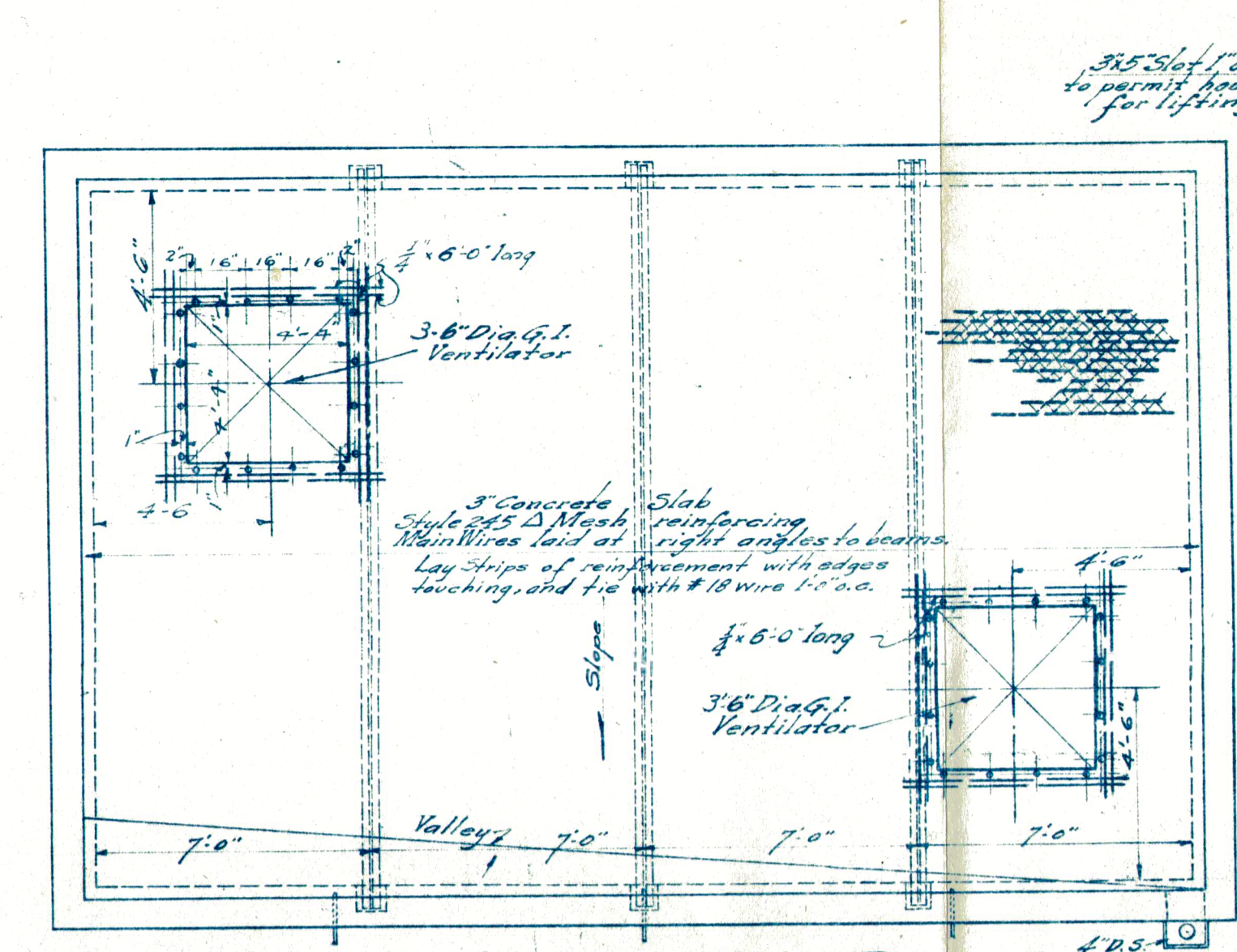
Second Floor used as residence by joint ticket agent  
and substation maintainer  
Six rooms, wood floors; walls + ceilings plastered  
and papered.



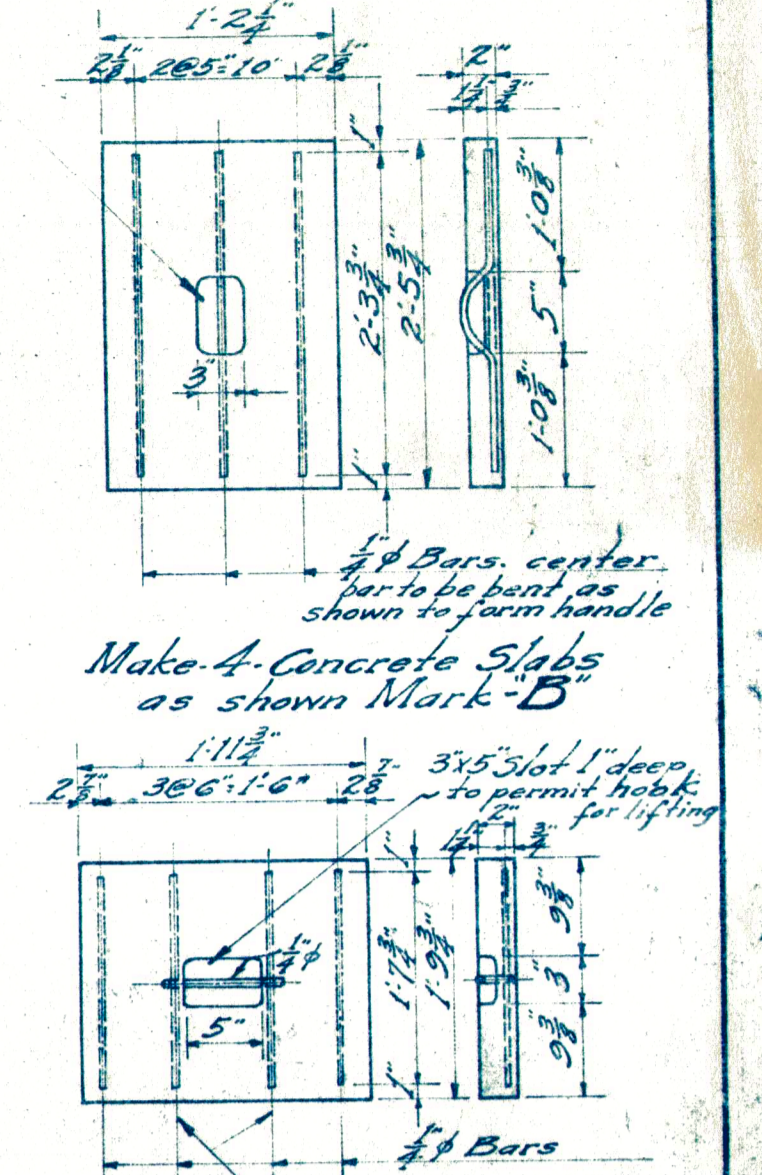
FOUNDATION PLAN



FLOOR PLAN

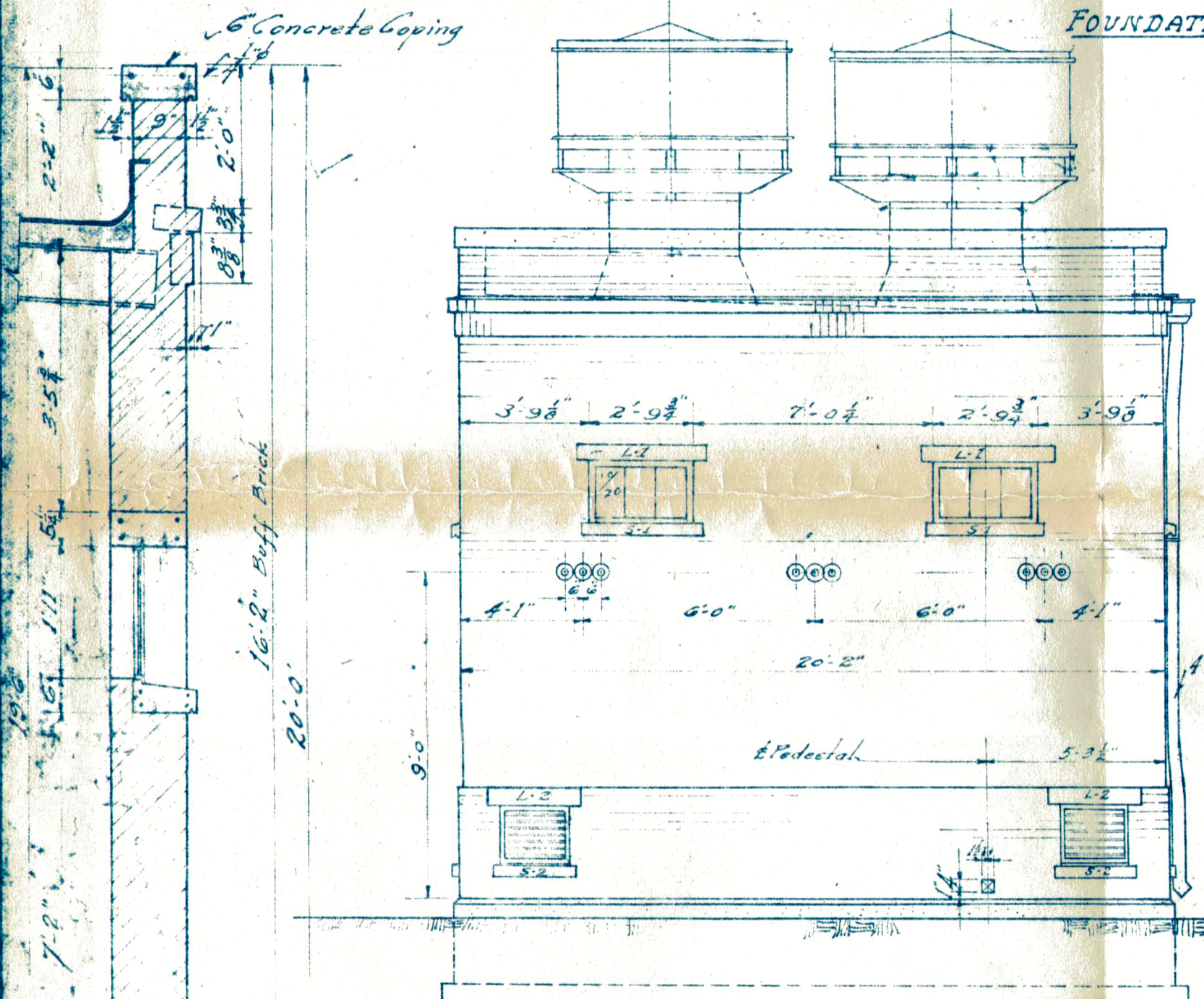


ROOF PLAN

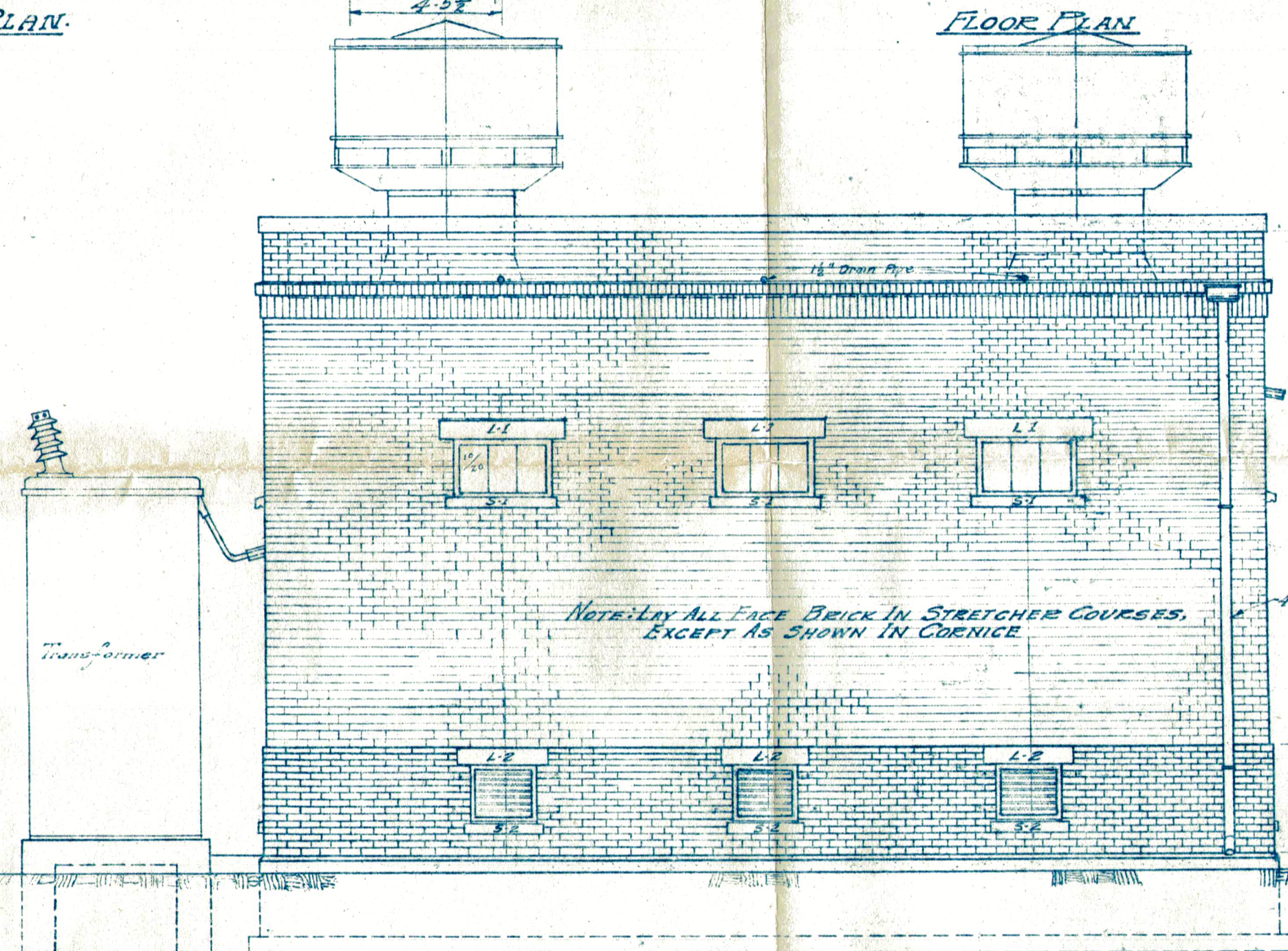


Make 4 Concrete Slabs as shown Mark B

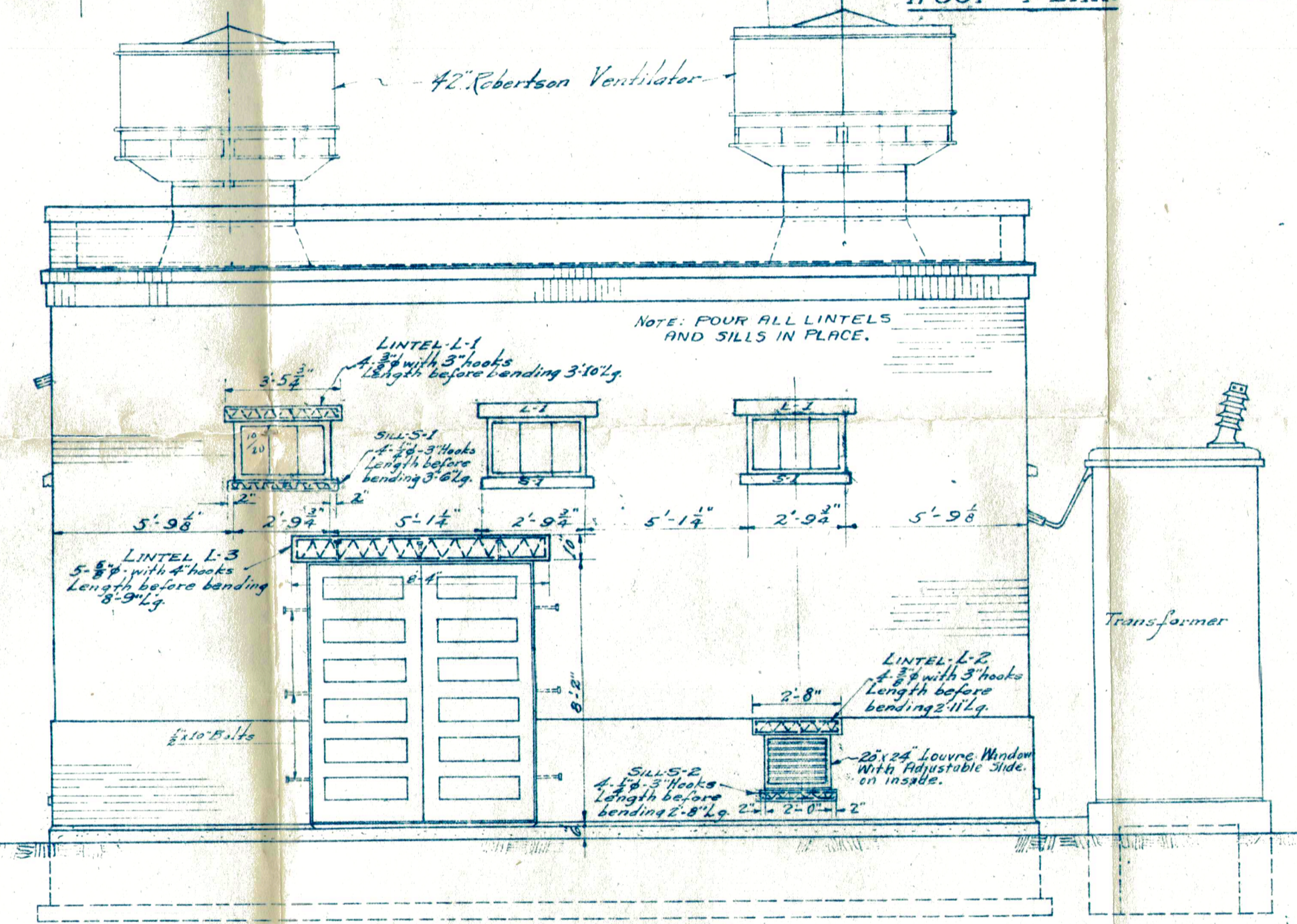
Make 4 Concrete Slabs as shown Mark A



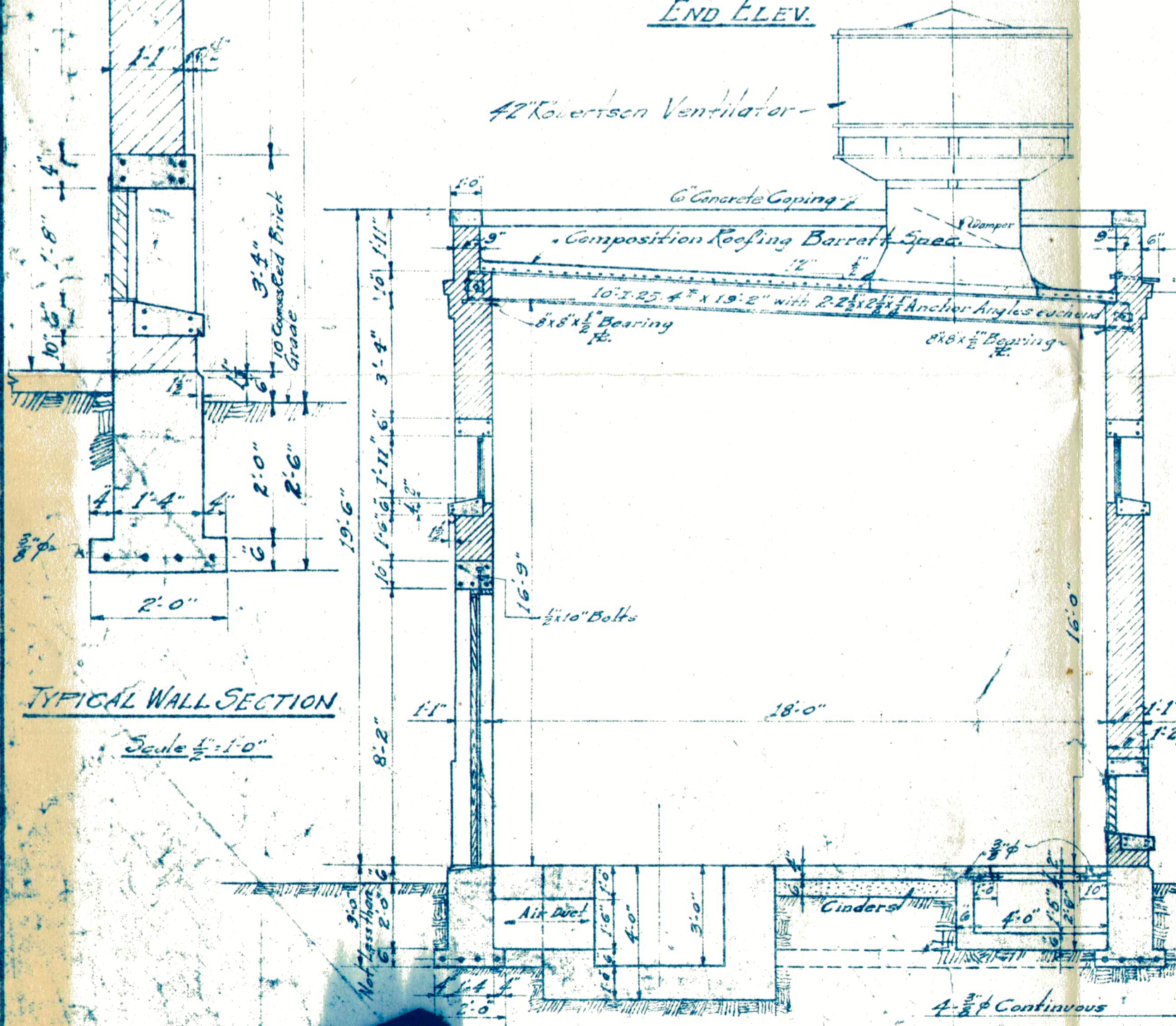
END ELEV.



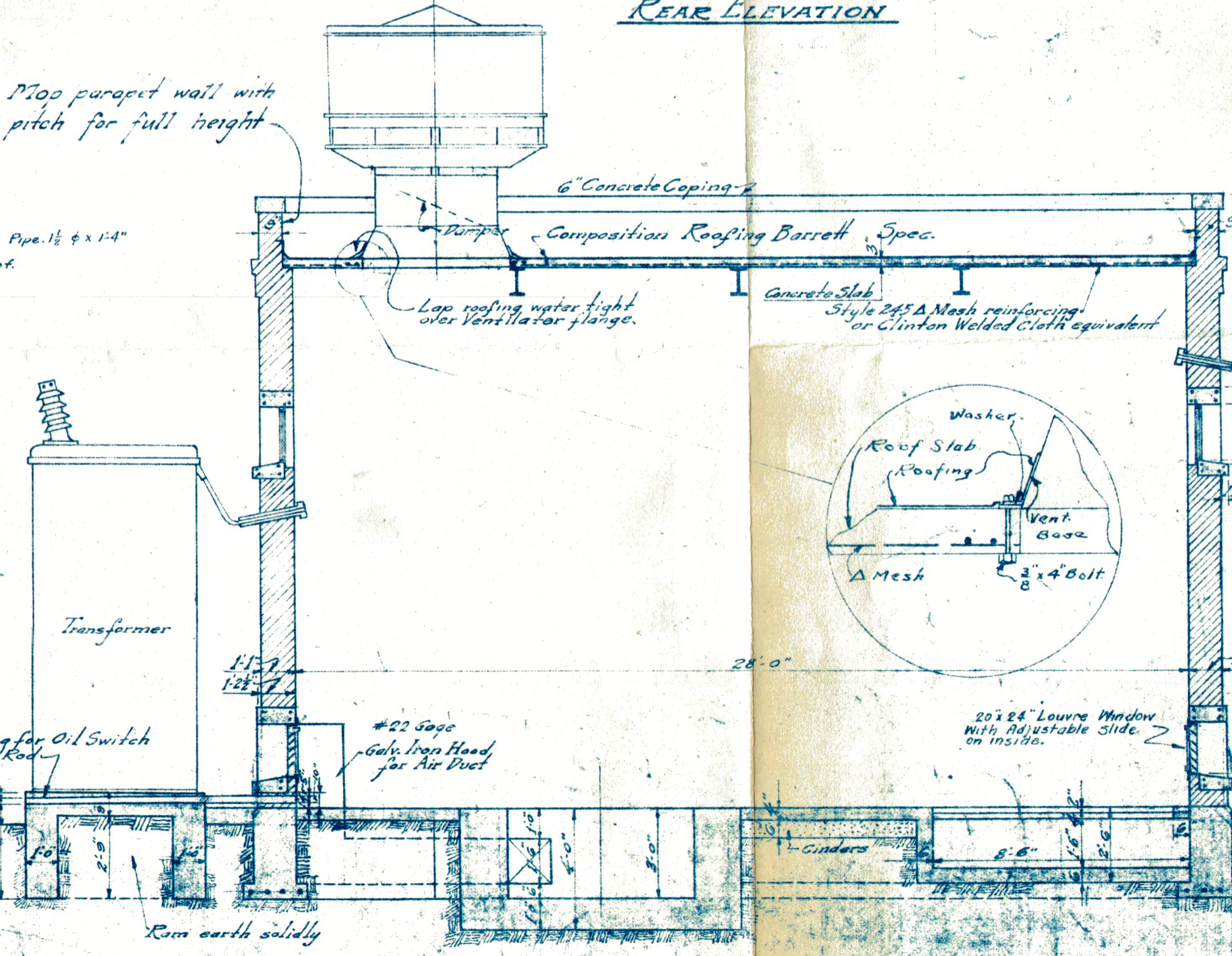
REAR ELEVATION



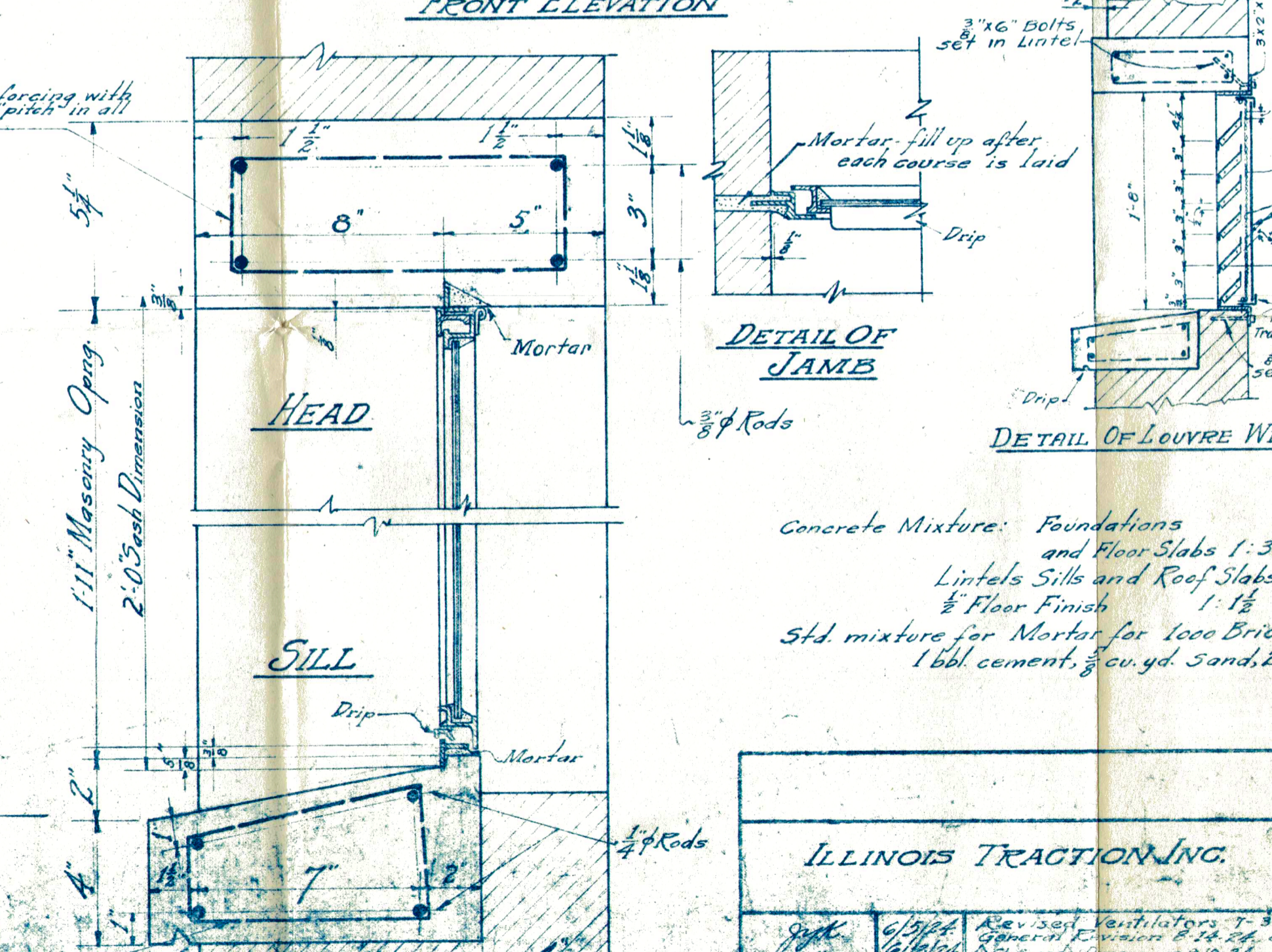
FRONT ELEVATION



TYPICAL WALL SECTION



LONGITUDINAL SECTION



SECTION THROUGH WINDOW

BILL OF MATERIAL

1. Cinders 10 cu. yds.
2. Cement 28 barrels
3. Sand 40 cu. yds.
4. Gravel 45 "
5. Lime 68 bu.
6. Brick 2,200. Common
7. 3-10-1/2" x 2-1/2" x 12" Lumber with 12-2x4's bearing ft. with 6-2x4's joists
8. G.I. Bolts 6-2x4's Bolts
9. Concrete Reinforcement One Roll A Mesh style 2454 equivalent 350 ft. 3/8"
10. Sash 10-10' 20' Glass 3 Light Steel basement sash with frame
11. Doors Two 3-0' x 8-0' x 1 1/2" Grand
12. Hinges 6-3-5 Bronze B.B. Butts
13. Lock 1 Front Door Cylinder Lock 3rd
14. Carcass 1 Top and 1 Bottom
15. Door Frame 2-2ft x 2 1/2" x 1 1/2"
16. Door Louvre Bolts 9-3/4" x 3/8" x 1 1/2"
17. Wall Ventilators 8 Screened Louvre Windows 20" x 24" with adjustable slide
18. Roof Ventilators 2-6-1 3/8" dia. with dampers and chains
19. Roofing 6 Squares 20' x 30' Spec.
20. Flashing 25 linear ft.
21. Down Spout 18 ft. of conductor #22 ga. galv. 1 head with screen 1-45 bend
22. Air Duct Hood 15 3/4" ft x 22 Gage #22
23. 1/2" x 4" pipe x 7'-0" long
24. Drain Pipe 3-7/8" 1 1/2" Pipe x 1'-4"

LIST OF INSTALLATIONS

LOCATION	YEAR
60 Cycle Stations	
SULPHUR SIDING	1924
BELL SIDING	
WORKEN	
CORNSTALK	
25 Cycle Stations	
MOODY SIDING	1924
LOVELL SIDING	
G.I.M. INTERLOCKER CROSSING	

Concrete Mixture: Foundations and Floor Slabs 1:3:5  
Lintels Sills and Roof Slabs 1:2:4  
Floor Finish 1:1 1/2  
Std. mixture for Mortar for 1cc Bricks  
1 bbl cement, 3 cu. yd. sand, 2 bu. lime

ILLINOIS TRACTION INC. STANDARD 100 K.W. AUTOMATIC ROTARY SUBSTATION BUILDING

Spec. 6/23/24  
W.C. 6/23/24  
S.M.C. 6/23/24

ILLINOIS TRACTION INC. 11-2-24  
STANDARD 100 K.W. AUTOMATIC ROTARY SUBSTATION BUILDING  
C-9525

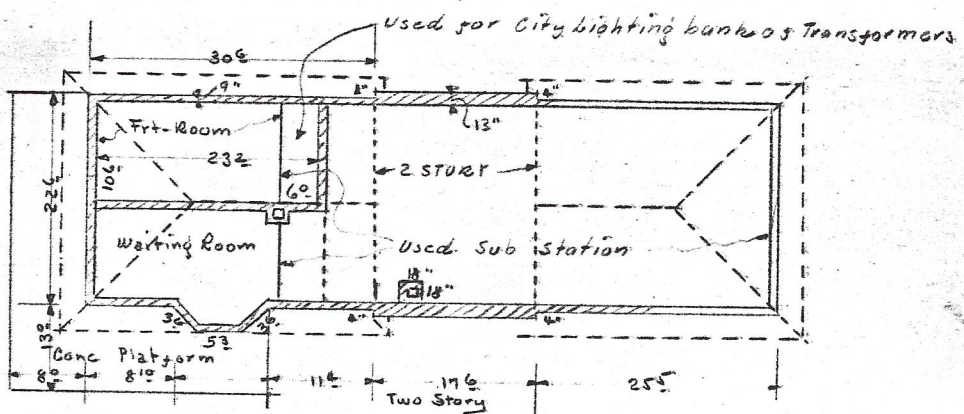
Date July 22 1929  
Carrier Ill Intrain Line  
Valuation Section 13 Ill

A. S. Yates for Carrier  
Albert J. Chandler for I. C. C.

- 80 Freight platform 4' x 6' 2" pine  
 av. 20 of 2x6 joist  
 20 of 6x8 post  
 36 of 1x6 bracing  
 30 in rough steps  
 Sta 7236+08  
 Old station sign  
 Sta 7263+95  
 Old station sign

Berry  
Sale  
Union

70 Combination passenger and sub station



See standard plans Built est 1906

Idas Concrete

Walls 3" rainscate, battered of hand  
pitch face facing blocks  
42 buff bricks face above.

Wops 1 3/4 bay wide removed  
1 3/4 doors

Roof Cedar shingle common look tile  
Area over depot end to 2 story wall  
Tie in w/ 12" cc in steel trusses  
Remainder roof areas w/ 3" hollow tile  
plaster fit under.

Prog ciled w/ lookouts with 4x6  
sawn material 2 1/2 cc.

616 mld G.I gutter  
4" G.I WP 4" x 5" C.I boots  
No storm drains

22 1/2  
8 1/2  
3 1/2  
5 3/4  
11 1/2  
4 1/2  
17 1/2  
4 1/2  
25 1/2  
30 1/2  
8 1/2  
13 1/2

INTERSTATE COMMERCE COMMISSION  
BUREAU OF VALUATION

Date July 22 1929

Carrier Gl. Traction Co.

Valuation Section 13 Gl.

L. S. Yates for Carrier

Dec 16 Albert J. M. ... for I. C. C.  
Union Ill

Floors 6" concrete

Ceiling. "deput end"

waiting rooms plaster and lath  
2x6 16" c.c. extends to end Bks partition  
Straight rooms none.

dent station end all  
plaster and tile roof structure fit

Two finish 1st story all  
plaster fit and lath, finishing

2nd story  
side walls only plaster and lath.

Partitions 9" c.c. bricks are shown  
too rough.  
plaster fit and lath finishing  
on one side only.

Ticket office partition 8' high  
with wainscot, and picket above

Electric lighting in conduit

- 1 Deput end
- 6 light outlets
- 1 Conduit drops 12" E1 shade 2 lamps
- 1 " goose neck 12" " " " "

Remainder

- 14 light outlets
- 2 Conduit drops 12" E1 shade 2 lamps
- 1 " goose neck 12" " " " "

INTERSTATE COMMERCE COMMISSION  
BUREAU OF VALUATION

Date July 22 1927

Carrier The traction Co.

Valuation Section 13 Ill.

A. S. Yates for Carrier

Albert J. Chandler for I. C. C.  
Union

Concrete platform as shown 4"

Extra areas 4' x 30' 9' x 14'

3rd station signs 62 sq. ft. 174" x 118" ftd

Concrete ret wall for platform

30 sq. ft. 8' x 3'

Crossing planks 30 sq. ft. 2 x 10

1st platform 7' x 12' 3" fence  
on 3 piers 6 x 8 x 8'

Landscape accessories for depot  
and out station \$15.00

Furniture 1910-14

1 Lion campsite

34 sq. stat benches

1 Blue hd glass case.

1 Bureau ticket case 22 x 8 x 25"

1 Centennial date

2 Ticket punches

1 1 qt paper case

1 set stamps

1 chair

1 Fairbanks PP scale 1000# 17 x 27

1 10' step ladder

1 Mount bracket + mirror

2 Benches

1 18" brush beam

1 4 wheel baggage truck

12.00

.50

10.00

2.00

1.00

30  
20  
11

22  
F

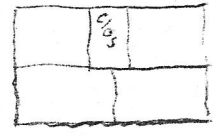
Date July 22 1929  
Carrier C. C. Lathrop Inc  
Valuation Section 13 Ill

A. S. Yates for Carrier  
for I. C. C.

Rec 16 A. Albert J. Chandler

(B) Residence for Sub Station Maintainer Union Ill  
and agent. Built 1920 est.  
One story frame. Gardens Vanities ready cut house

18' x 26' x <sup>9'</sup>13' C.B.



Floors 8' x 11' and walls 8" x est. 3"  
Exc 2'

Walls 6" imitation lath ady fild  
2 x 4 16" cc.

- 8 Wds 2 1/2 x 4 1/2 x 13/8 5 x hung
- 2 Wds 2 1/2 x 6 1/2 x 13/8 5 x pane

Roof prep. 1" corr. 2 x 4 2" cc.

Craig 12" open

Floors 1" flt grs 2 x 8 2" cc.

Widing plaster paper wd lath 2 x 4 16" cc.

Two fin 1 1/2" dia plant-paper wd lath

Partitions wrap iron fin

- 2 Wds 2 1/2 x 6 1/2 x 13/8 5 x pane
- 2 Cases of pr 2 1/2 x 6 1/2
- 1 " " " 5" x 6 1/2

1 Wd skin 17 x 17 x 8" on brackets

Porch. 6' x 8'

Roof prep. 1" corr 2 x 4 2" cc  
fld under.

Craig 3" open

Floors 1" dr on fld 2 x 6 2" cc.

Blocking 4 2x 4s

Grills - value \$10.00

Date July 22 1929

Carrier Ill. Tractor Co.

Valuation Section 13 Ill.

A. S. Yates for Carrier  
Albert J. Chandler for I. C. C.

Rec 16

Union Ill

Roofs 42 x 62  
Roof prep. 1" corr 2 x 4 22 cc  
fld unders.  
Craj 3" open  
Ceas. 1" corr 2 x 6 22 cc  
Blocking 40' hwh  
Rough sides 80' hwh  
Trellis value \$8.00

Roofs screened only  
Concrete walk av 20" x 88" 3"

(100) Cistern 62 x 82 little necks.  
4" corr lks lining plastered  
corr platforms 32 x 32 x 4"  
C.I. Pumps.

(60) Out house 3' x 4' x 8' C.R.  
Walls B.B. bottom door  
Roof prep. Craj 6" open  
Box seat 1/2d vault.

(40) Coal houses. 9' x 12' x 8' C.R.  
Sides 42 of 6 x 8  
120' hwh lks  
Walls B.B. 2 x 4 22 cc  
1 Bottom door  
Roof prep 1" corr 2 x 4 22 cc  
Craj 12" open  
Floors grain doped

(100) Sawn 25' x 75'  
Hedge. 110 ft.  
Landscape accessories value \$20.00

(100) Cistern  
15 of 4" VCP  
Charcoal box 36" VCP x 30"

1 Elect light wire open in  
out house

29  
3  
87

25

Date 6-28-1929

BUREAU OF VALUATION

Carrier I. T. Co

Valuation Section 14-114

Acct. 16

By *V. W. Balderson* for Carrier  
E. F. C. for I. C. C.

White Heath 144

Built 1906 and below  
2 roomsFrame Freight House Type IV  
18' x 32.5 x  $\frac{12+21}{2}$ 

Shingle Gable Roof

Foundation 18 P.H. x 2'  
36 M.S. 3" x 12" x 2'Super. D.S. on 2" x 4" @ 2' etc. Sheathing T&G. Y. walls  
and ceiling  
Painted inside and out  
(Type IV pass. portion)

Lighting Electric - conduit 6-outlets.

Gravel Platform - 12' x 93' x 1' deep

Conc. Curb. 6" x 18" x 93'

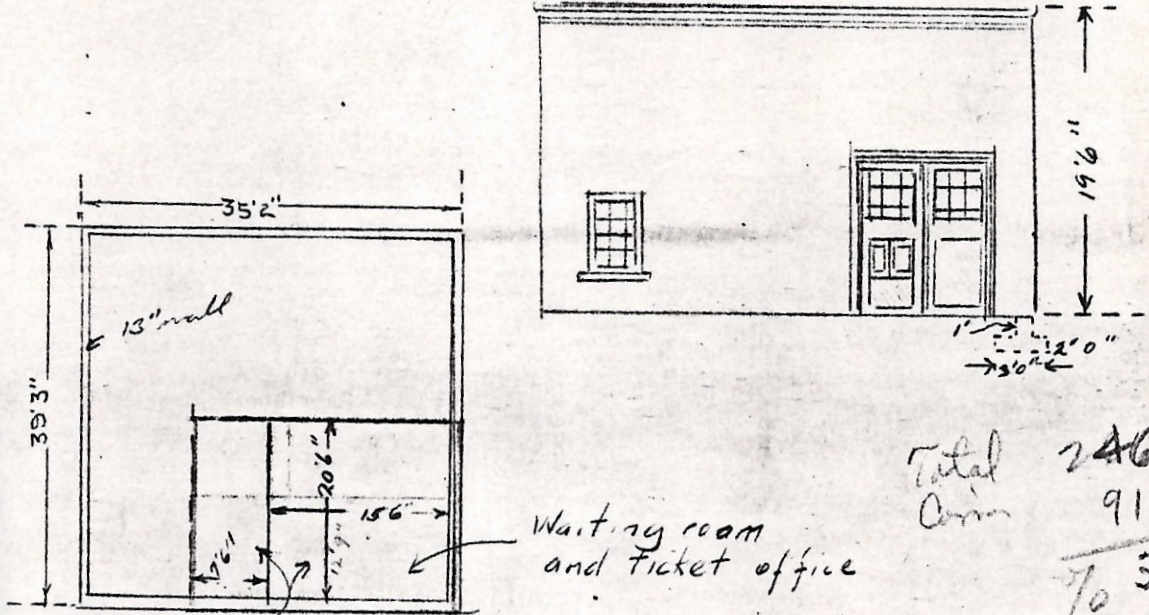
Date 12/12/30  
Carrier Illinois Traction Inc  
Valuation Section 14-III

16

454

L. S. Gates for Carrier  
F. P. [Signature] for I. C. C.

White Heath, Ill



Total	24609
Carry	9194
<hr/>	
	7037.4

Used by Illinois Traction Inc

Substation building owned by Illinois Power and Light Corp. Portion used as passenger station as shown outlined in red

Building is of brick, face brick four sides, 8" concrete floor, 4" concrete roof. 6 columns 16 1/4" I beams 14" I beams for roof. Fida. ~~concrete~~ brick limestone sills, wood sash throughout

Interior unfinished - brick painted

Partitions wood - 2" x 4" framing - 1/8" sheathing D m + B ptd.

Compo roofing

Heating - stoves

Lighting - wiring in conduit 12" pvc reflectors

13 - 4 light clusters - conduit drop 60 Watt lamps

6 - single conduit outlets

1 - 4 light cluster - interior

38 lin ft. cov. V. downspouts

1 1/2' station sign